

Woodbury County, Iowa

Horizontal Datum: **NAD 83(2011)** - Vertical Datum: **NAVD 1988**

Iowa State Plane North Zone (1401)

Iowa Regional Coordinate System Zone 4 Sioux City-Iowa Falls LCC

US Survey Feet

2015

Point Name: **8072**

GPS No. (1998): **8072**

Designation: 894516 2 (Set by DENI Associates in 1998)

NAD 83(NA2011) Latitude: **N42°31'07.12967"**

Longitude: **W96°09'24.73466"**

NAVD 88 Ortho Height: **1275.090sft**

Ellip. Ht: **1187.883sft**

Geoid09

Iowa North Zone (1401) Northing: **3663305.290sft**

Easting: **4205109.319sft**

Mapping Angle: **-1°48'02"**

Combination Scale Factor: **0.999892060**

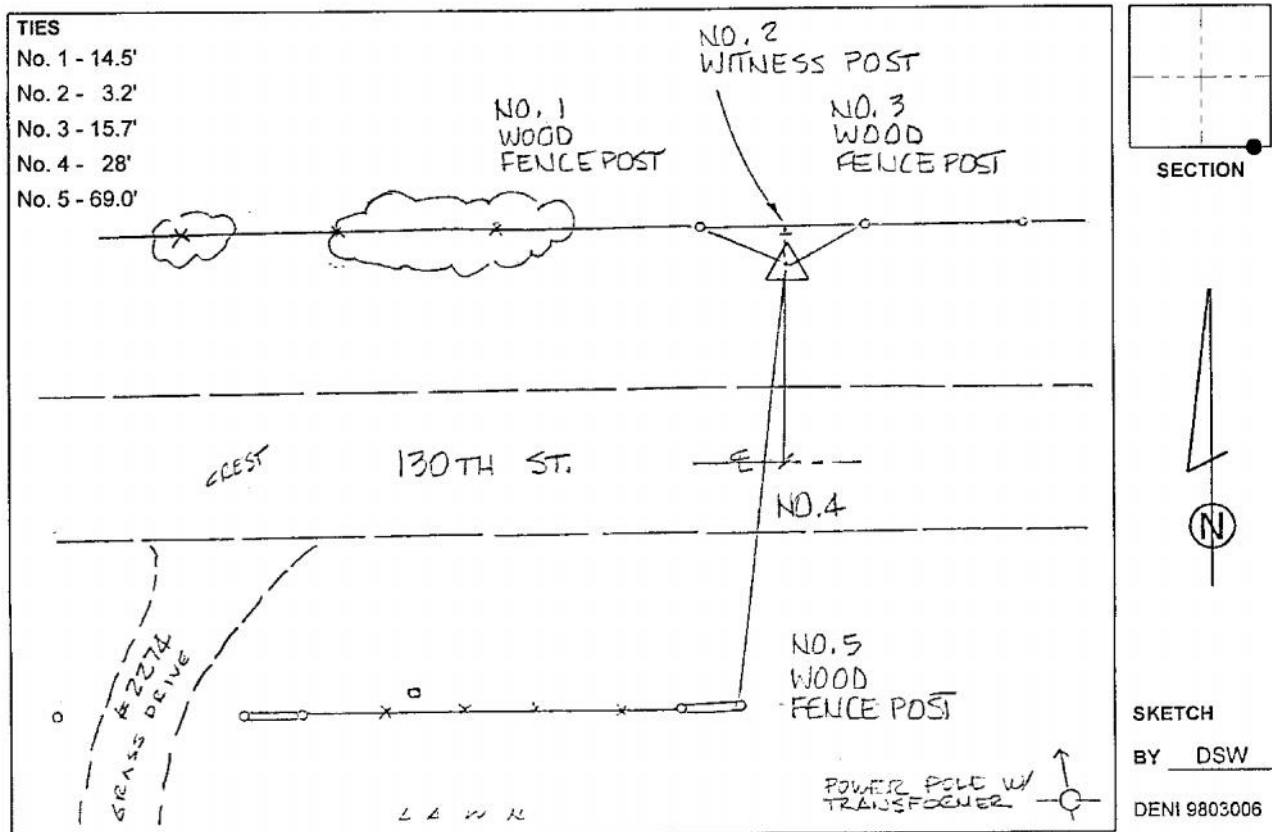
IaRCS Zone 4 Northing: **8597433.618sft**

Easting: **14143171.278sft**

Mapping Angle: **-00° 53' 41"**

Combination Scale Factor: **0.999988146**

Monument Type: 3-1/4" aluminum cap on aluminum rod in 6" PVC pipe with aluminum access cover.



This document was prepared by Dan Corbin, Inc. on March 6, 2015 for Woodbury County, Iowa.