

Woodbury County, Iowa

Horizontal Datum: **NAD 83(2011)** - Vertical Datum: **NAVD 1988**

Iowa State Plane North Zone (1401)

Iowa Regional Coordinate System Zone 4 Sioux City-Iowa Falls LCC

US Survey Feet

2015

Point Name: **8073**

GPS No. (1998): **8073**

Designation: 884506 4 (Set by DENI Associates in 1998)

NAD 83(NA2011) Latitude: **N42°28'26.78040"**

Longitude: **W96°08'06.44761"**

NAVD 88 Ortho Height: **1324.040sft**

Ellip. Ht: **1236.761sft**

Geoid09

Iowa North Zone (1401) Northing: **3646897.631sft**

Easting: **4210463.121sft**

Mapping Angle: **-1°47'09"**

Combination Scale Factor: **0.999892040**

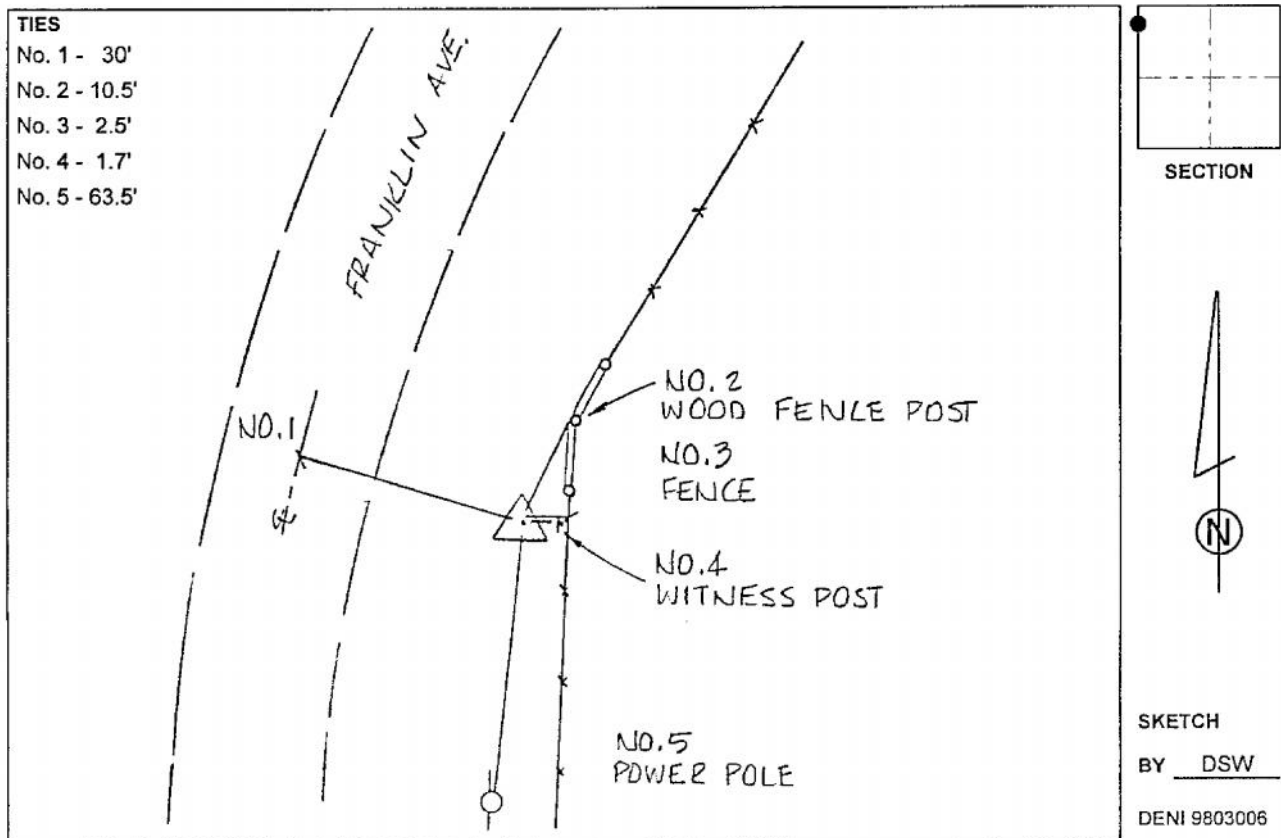
IaRCS Zone 4 Northing: **8581111.100sft**

Easting: **14148784.363sft**

Mapping Angle: **-00° 52' 48"**

Combination Scale Factor: **0.999986304**

Monument Type: 3-1/4" aluminum cap on aluminum rod in 6" PVC pipe with aluminum access cover.



This document was prepared by Dan Corbin, Inc. on March 6, 2015 for Woodbury County, Iowa.