

Woodbury County, Iowa

Horizontal Datum: **NAD 83(2011)** - Vertical Datum: **NAVD 1988**

Iowa State Plane North Zone (1401)

Iowa Regional Coordinate System Zone 4 Sioux City-Iowa Falls LCC

US Survey Feet

2015

Point Name: **8075**

GPS No. (1998): **8075**

Designation: 884636 2 (Set by DENI Associates in 1998)

NAD 83(NA2011) Latitude: **N42°23'09.70173"**

Longitude: **W96°08'09.51331"**

NAVD 88 Ortho Height: **1292.460sft**

Ellip. Ht: **1205.151sft**

Geoid09

Iowa North Zone (1401) Northing: **3614822.908sft**

Easting: **4209232.835sft**

Mapping Angle: **-1°47'11"**

Combination Scale Factor: **0.999899886**

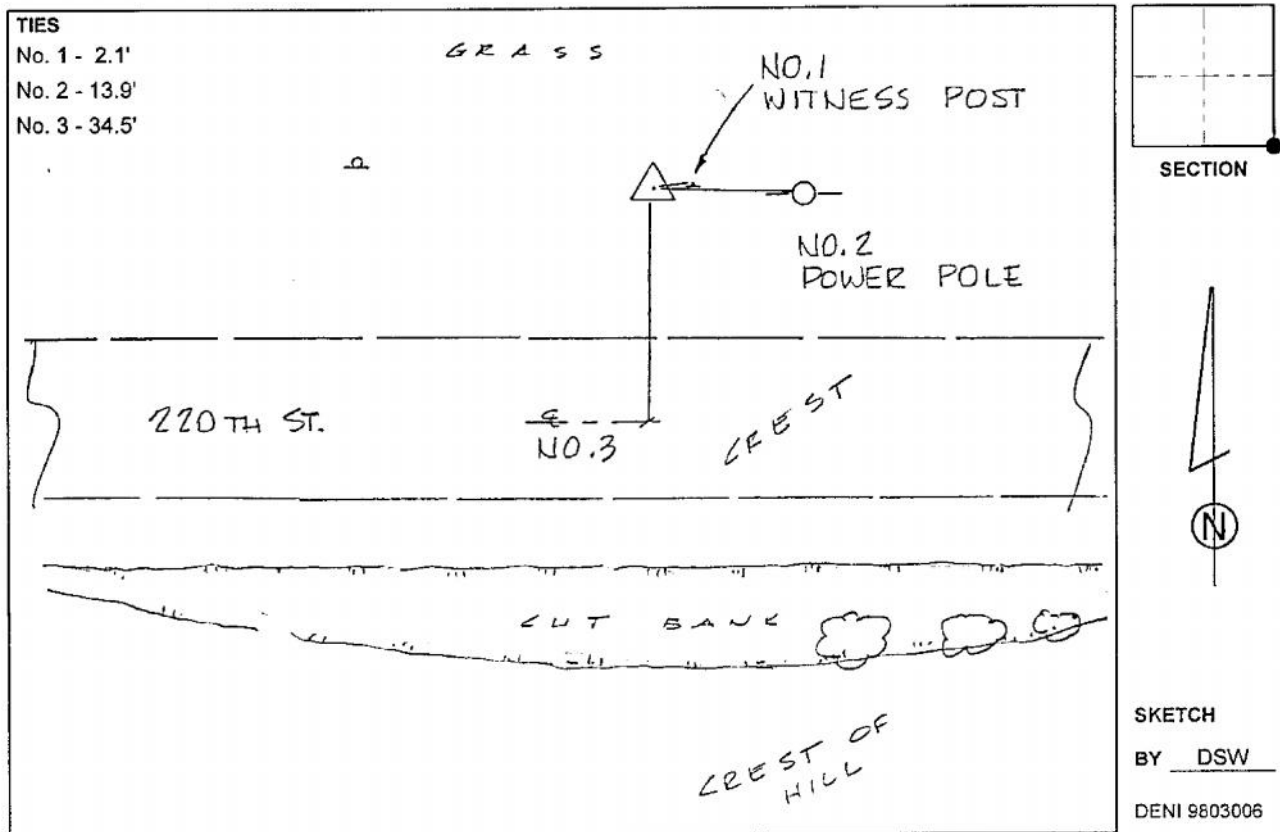
IaRCS Zone 4 Northing: **8549017.960sft**

Easting: **14148061.278sft**

Mapping Angle: **-00° 52' 50"**

Combination Scale Factor: **0.999990575**

Monument Type: 3-1/4" aluminum cap on aluminum rod in 6" PVC pipe with aluminum access cover.



This document was prepared by Dan Corbin, Inc. on March 6, 2015 for Woodbury County, Iowa.