

**Woodbury County, Iowa**

Horizontal Datum: **NAD 83(2011)** - Vertical Datum: **NAVD 1988**

Iowa State Plane North Zone (1401)

Iowa Regional Coordinate System Zone 4 Sioux City-Iowa Falls LCC

US Survey Feet

**2015**

Point Name: **8076**

GPS No. (1998): **8076**

**Designation:** 874519 4 (Set by DENI Associates in 1998)

NAD 83(NA2011) Latitude: **N42°20'31.93272"**

Longitude: **W96°08'06.56299"**

NAVD 88 Ortho Height: **1359.820sft**

Ellip. Ht: **1272.366sft**

**Geoid09**

Iowa North Zone (1401) Northing: **3598853.100sft**

Easting: **4208956.392sft**

Mapping Angle: **-1°47'09"**

Combination Scale Factor: **0.999900706**

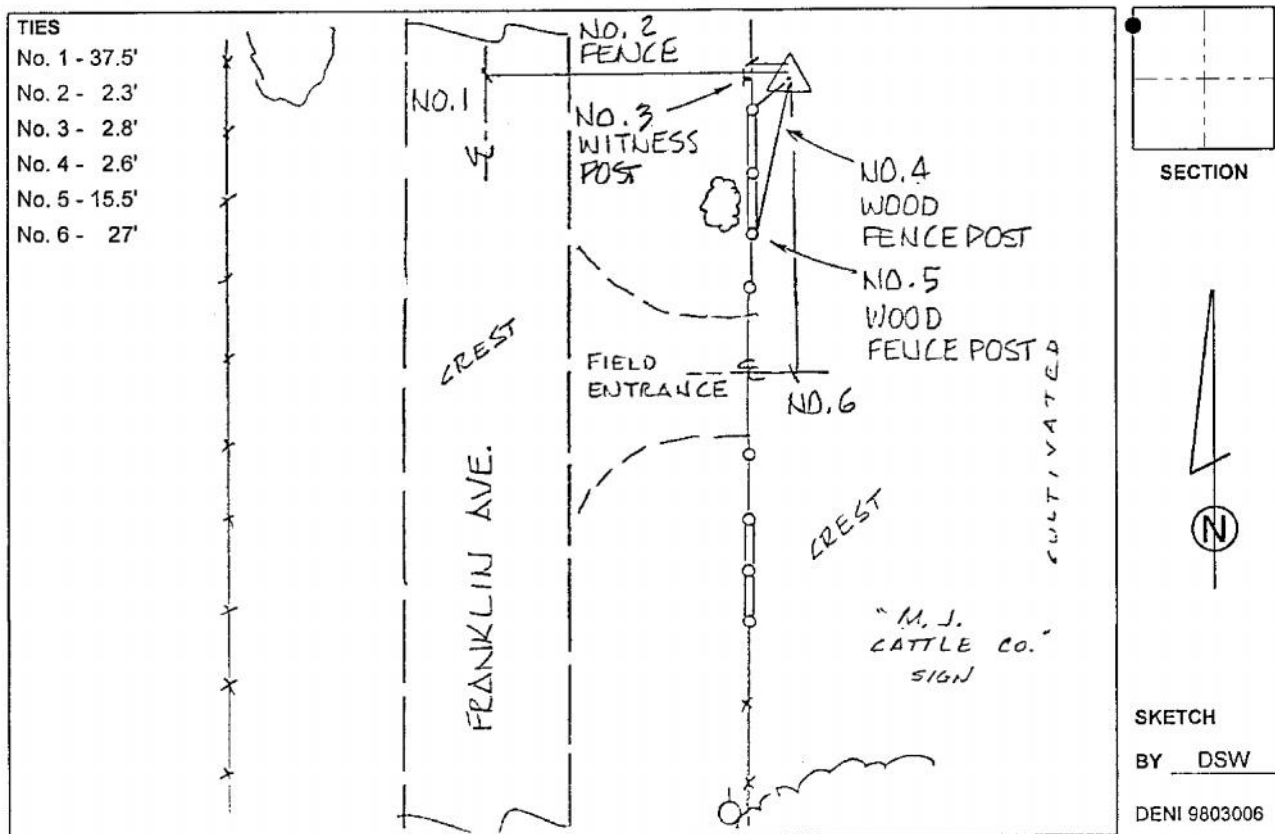
IaRCS Zone 4 Northing: **8533044.340sft**

Easting: **14148037.356sft**

Mapping Angle: **-00° 52' 48"**

Combination Scale Factor: **0.999989603**

**Monument Type:** 3-1/4" aluminum cap on aluminum rod in 6" PVC pipe with aluminum access cover.



*This document was prepared by Dan Corbin, Inc. on March 6, 2015 for Woodbury County, Iowa.*