

Woodbury County, Iowa

Horizontal Datum: **NAD 83(2011)** - Vertical Datum: **NAVD 1988**

Iowa State Plane North Zone (1401)

Iowa Regional Coordinate System Zone 4 Sioux City-Iowa Falls LCC

US Survey Feet

2015

Point Name: **8078**

GPS No. (1998): **8078**

Designation: 864519 4 (Set by DENI Associates in 1998)

NAD 83(NA2011) Latitude: **N42°15'23.12983"**

Longitude: **W96°08'05.76745"**

NAVD 88 Ortho Height: **1064.420sft**

Ellip. Ht: **976.735sft**

Geoid09

Iowa North Zone (1401) Northing: **3567607.022sft**

Easting: **4208041.961sft**

Mapping Angle: **-1°47'09"**

Combination Scale Factor: **0.999924370**

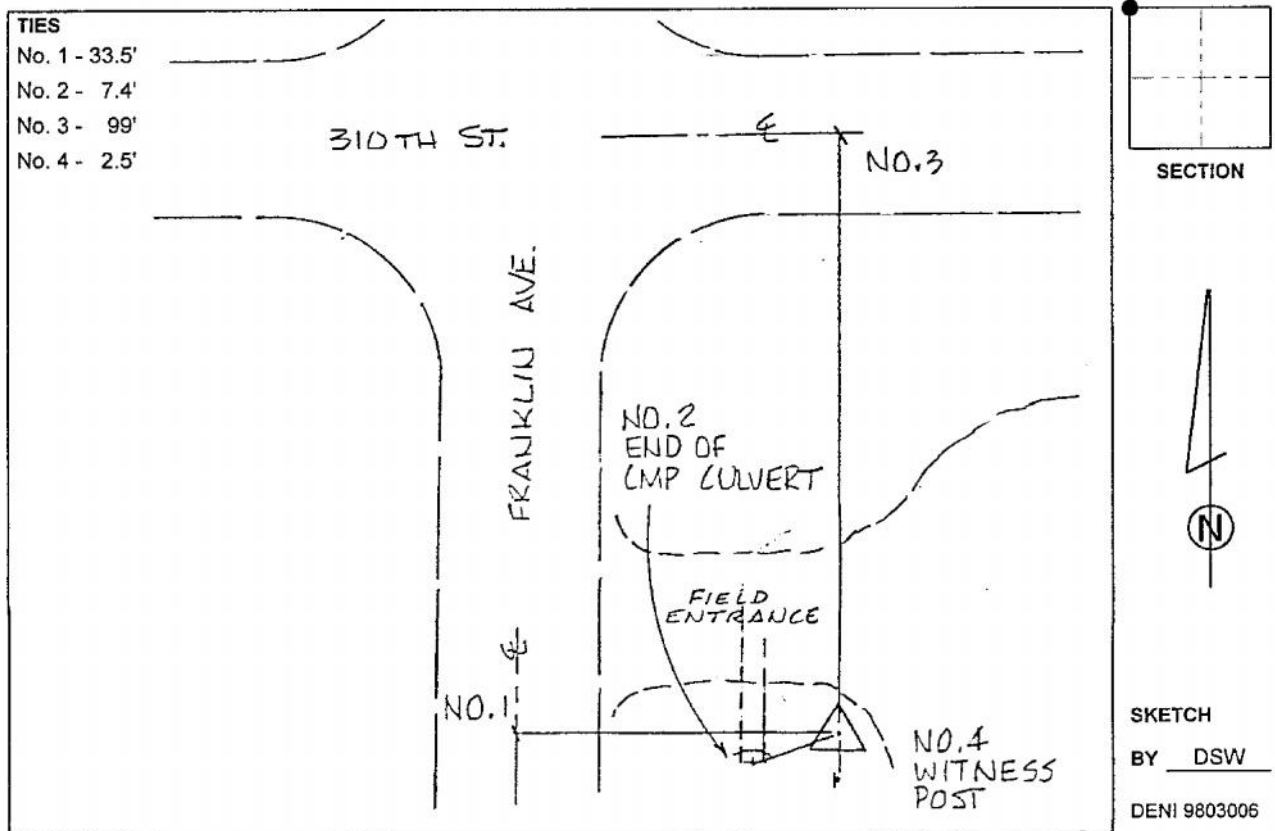
IaRCS Zone 4 Northing: **8501784.979sft**

Easting: **14147617.014sft**

Mapping Angle: **-00° 52' 48"**

Combination Scale Factor: **1.000009841**

Monument Type: 3-1/4" aluminum cap on aluminum rod in 6" PVC pipe with aluminum access cover.



This document was prepared by Dan Corbin, Inc. on March 6, 2015 for Woodbury County, Iowa.