

Woodbury County, Iowa

Horizontal Datum: **NAD 83(2011)** - Vertical Datum: **NAVD 1988**

Iowa State Plane North Zone (1401)

Iowa Regional Coordinate System Zone 4 Sioux City-Iowa Falls LCC

US Survey Feet

2015

Point Name: **8079**

GPS No. (1998): **8079**

Designation: 864636 2 (Set by DENI Associates in 1998)

NAD 83(NA2011) Latitude: **N42°12'49.44002"**

Longitude: **W96°08'11.39617"**

NAVD 88 Ortho Height: **1064.061sft**

Ellip. Ht: **976.221sft**

Geoid09

Iowa North Zone (1401) Northing: **3552070.176sft**

Easting: **4207133.776sft**

Mapping Angle: **-1°47'13"**

Combination Scale Factor: **0.999929979**

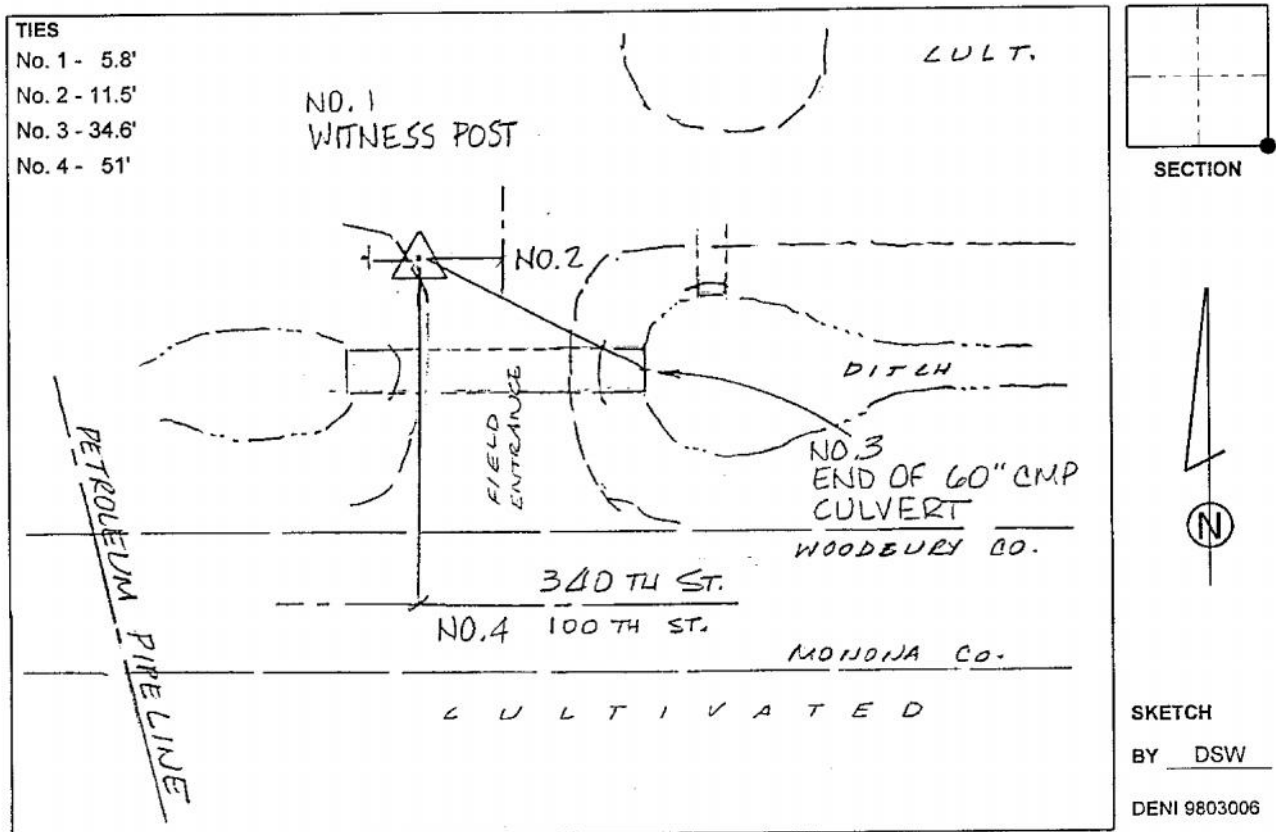
IaRCS Zone 4 Northing: **8486234.397sft**

Easting: **14146954.531sft**

Mapping Angle: **-00° 52' 51"**

Combination Scale Factor: **1.000013721**

Monument Type: 3-1/4" aluminum cap on aluminum rod in 6" PVC pipe with aluminum access cover.



This document was prepared by Dan Corbin, Inc. on March 6, 2015 for Woodbury County, Iowa.