

**Woodbury County, Iowa**

Horizontal Datum: **NAD 83(2011)** - Vertical Datum: **NAVD 1988**

Iowa State Plane North Zone (1401)

Iowa Regional Coordinate System Zone 4 Sioux City-Iowa Falls LCC

US Survey Feet

**2015**

Point Name: **8080**

GPS No. (1998): **8080**

**Designation:** 864633 2 (Set by DENI Associates in 1998)

NAD 83(NA2011) Latitude: **N42°12'51.54655"**

Longitude: **W96°11'53.18995"**

NAVD 88 Ortho Height: **1069.160**sft

Ellip. Ht: **981.825**sft

**Geoid09**

Iowa North Zone (1401) Northing: **3552809.810**sft

Easting: **4190458.802**sft

Mapping Angle: **-1°49'43"**

Combination Scale Factor: **0.999929632**

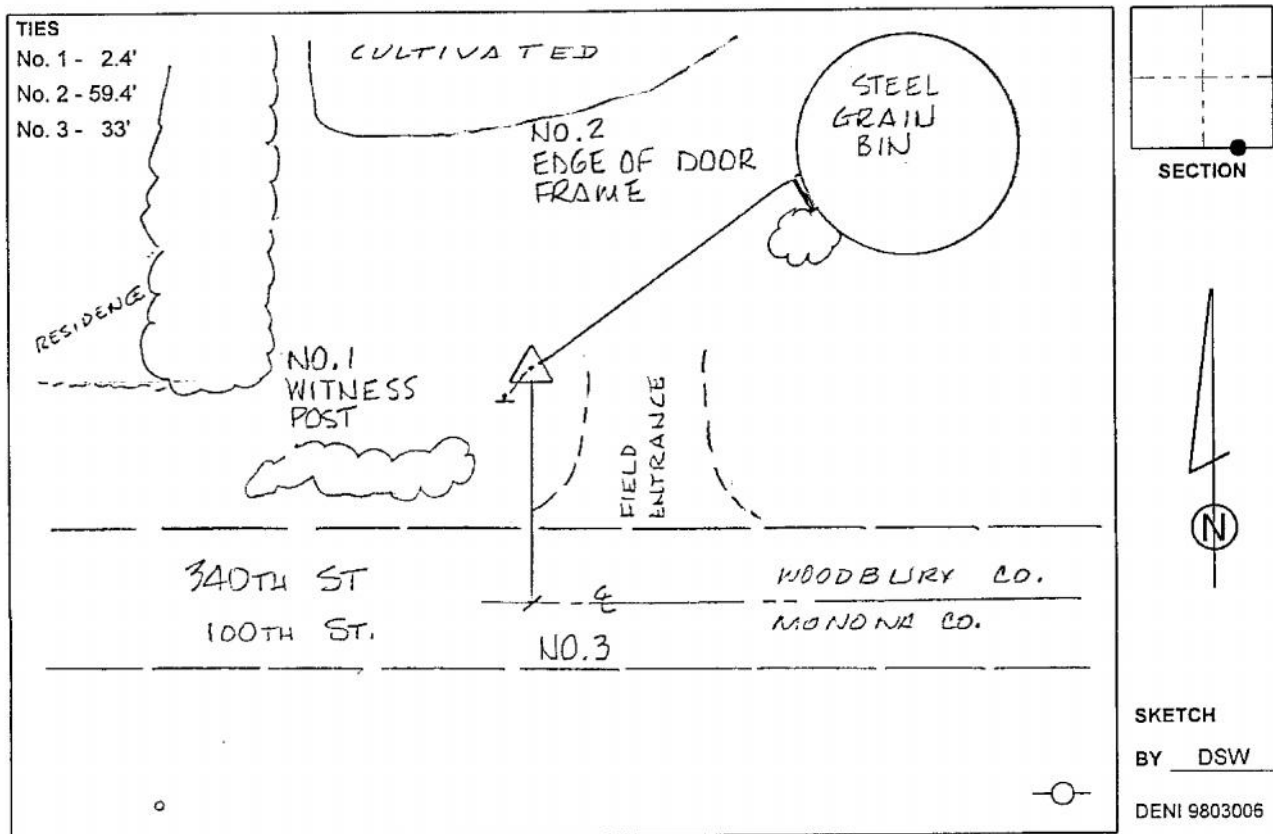
IaRCS Zone 4 Northing: **8486710.325**sft

Easting: **14130268.546**sft

Mapping Angle: **-00° 55' 21"**

Combination Scale Factor: **1.000013396**

**Monument Type:** 3-1/4" aluminum cap on aluminum rod in 6" PVC pipe with aluminum access cover.



*This document was prepared by Dan Corbin, Inc. on March 6, 2015 for Woodbury County, Iowa.*