

**Woodbury County, Iowa**

Horizontal Datum: **NAD 83(2011)** - Vertical Datum: **NAVD 1988**

Iowa State Plane North Zone (1401)

Iowa Regional Coordinate System Zone 4 Sioux City-Iowa Falls LCC

US Survey Feet

**2015**

Point Name: **8082**

GPS No. (1998): **8082**

**Designation:** 864603 4 (Set by DENI Associates in 1998)

NAD 83(NA2011) Latitude: **N42°18'01.99006"**

Longitude: **W96°11'20.89098"**

NAVD 88 Ortho Height: **1071.900sft**

Ellip. Ht: **984.749sft**

**Geoid09**

Iowa North Zone (1401) Northing: **3584141.882sft**

Easting: **4193887.515sft**

Mapping Angle: **-1°49'21"**

Combination Scale Factor: **0.999918792**

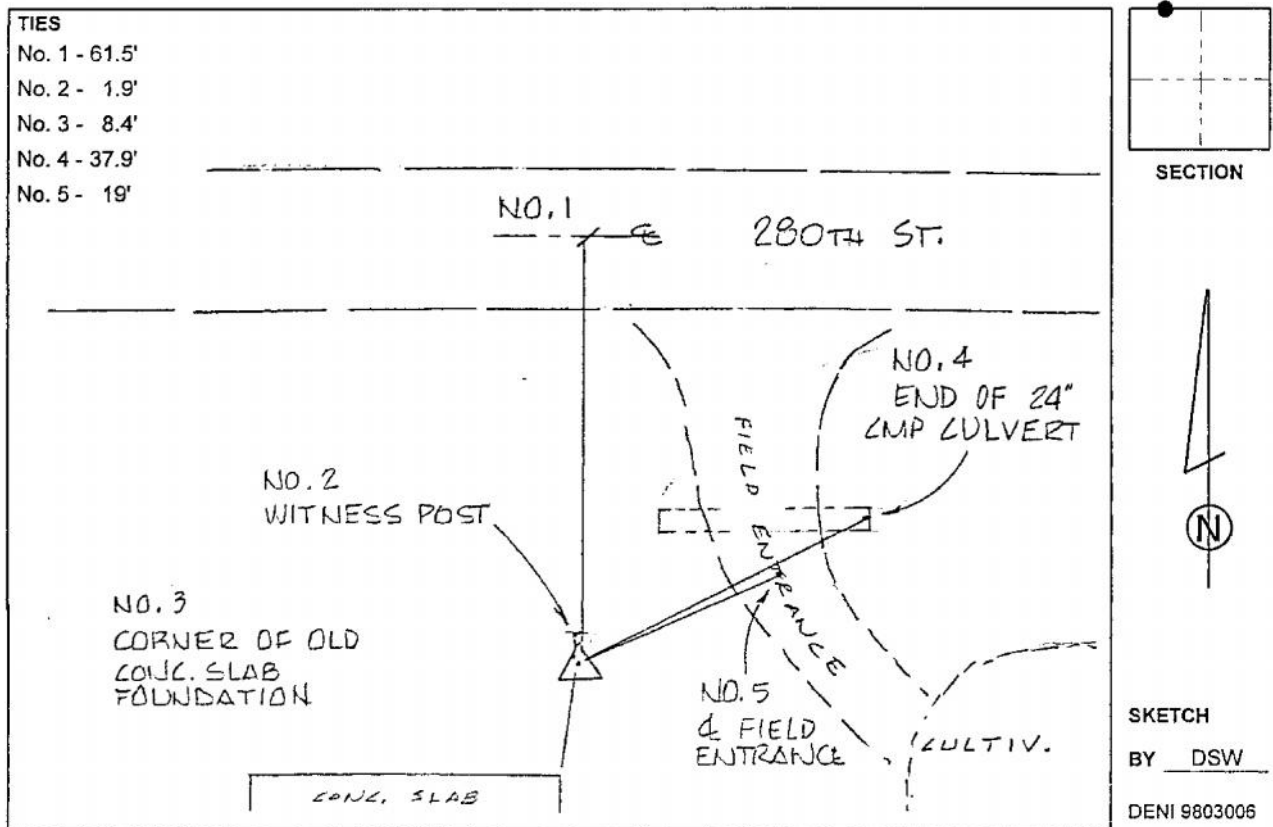
IaRCS Zone 4 Northing: **8518095.386sft**

Easting: **14133201.655sft**

Mapping Angle: **-00° 55' 00"**

Combination Scale Factor: **1.000006051**

**Monument Type:** 3-1/4" aluminum cap on aluminum rod in 6" PVC pipe with aluminum access cover.



*This document was prepared by Dan Corbin, Inc. on March 6, 2015 for Woodbury County, Iowa.*