

Woodbury County, Iowa

Horizontal Datum: **NAD 83(2011)** - Vertical Datum: **NAVD 1988**

Iowa State Plane North Zone (1401)

Iowa Regional Coordinate System Zone 4 Sioux City-Iowa Falls LCC

US Survey Feet

2015

Point Name: **8084**

GPS No. (1998): **8084**

Designation: 884634 3 (Set by DENI Associates in 1998)

NAD 83(NA2011) Latitude: **N42°23'13.82193"**

Longitude: **W96°11'38.07918"**

NAVD 88 Ortho Height: **1138.570sft**

Ellip. Ht: **1051.620sft**

Geoid09

Iowa North Zone (1401) Northing: **3615733.086sft**

Easting: **4193602.250sft**

Mapping Angle: **-1°49'33"**

Combination Scale Factor: **0.999907113**

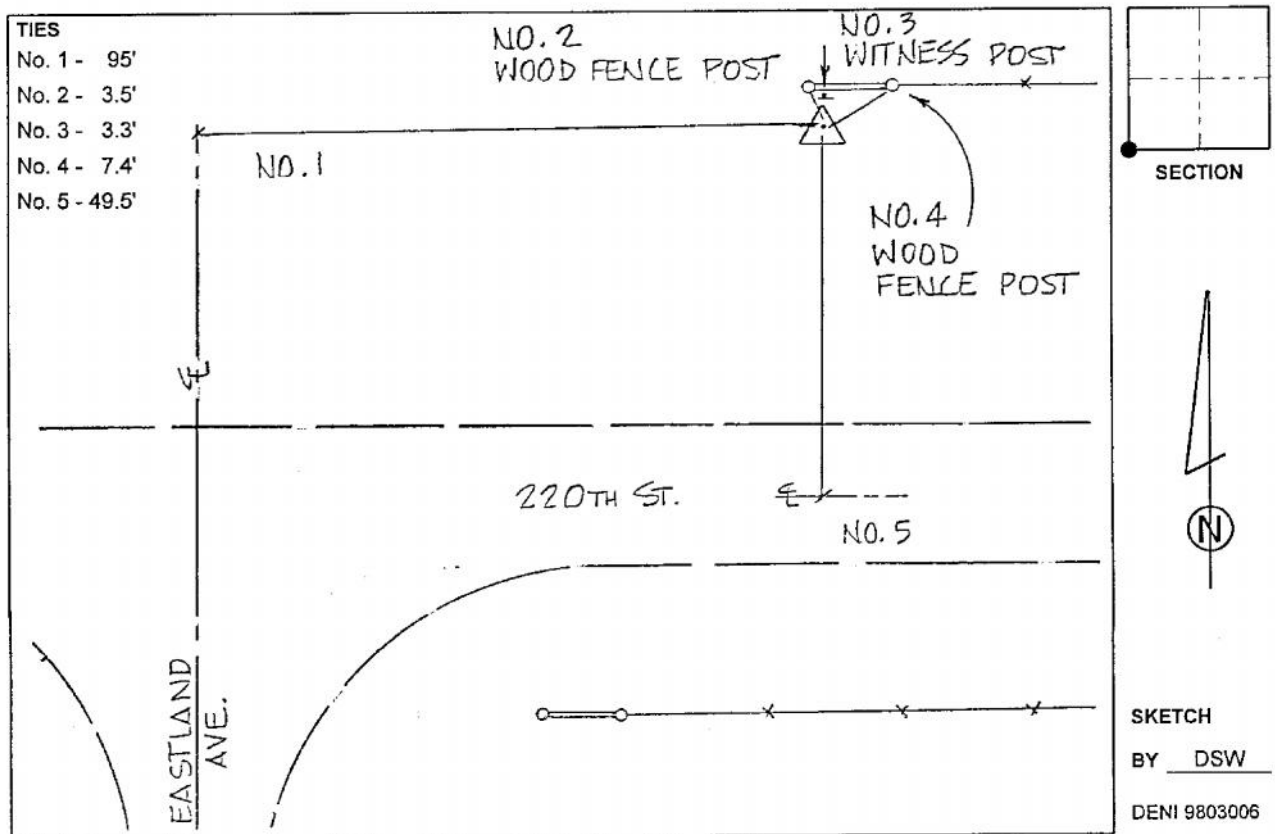
IaRCS Zone 4 Northing: **8549680.946sft**

Easting: **14132416.832sft**

Mapping Angle: **-00° 55' 11"**

Combination Scale Factor: **0.999997876**

Monument Type: 3-1/4" aluminum cap on aluminum rod in 6" PVC pipe with aluminum access cover.



This document was prepared by Dan Corbin, Inc. on March 6, 2015 for Woodbury County, Iowa.