

Woodbury County, Iowa

Horizontal Datum: **NAD 83(2011)** - Vertical Datum: **NAVD 1988**

Iowa State Plane North Zone (1401)

Iowa Regional Coordinate System Zone 4 Sioux City-Iowa Falls LCC

US Survey Feet

2015

Point Name: **8085**

GPS No. (1998): **8085**

Designation: 884616 2 (Set by DENI Associates in 1998)

NAD 83(NA2011) Latitude: **N42°25'50.47473"**

Longitude: **W96°11'46.70633"**

NAVD 88 Ortho Height: **1124.620sft**

Ellip. Ht: **1037.706sft**

Geoid09

Iowa North Zone (1401) Northing: **3631603.394sft**

Easting: **4193460.859sft**

Mapping Angle: **-1°49'39"**

Combination Scale Factor: **0.999904368**

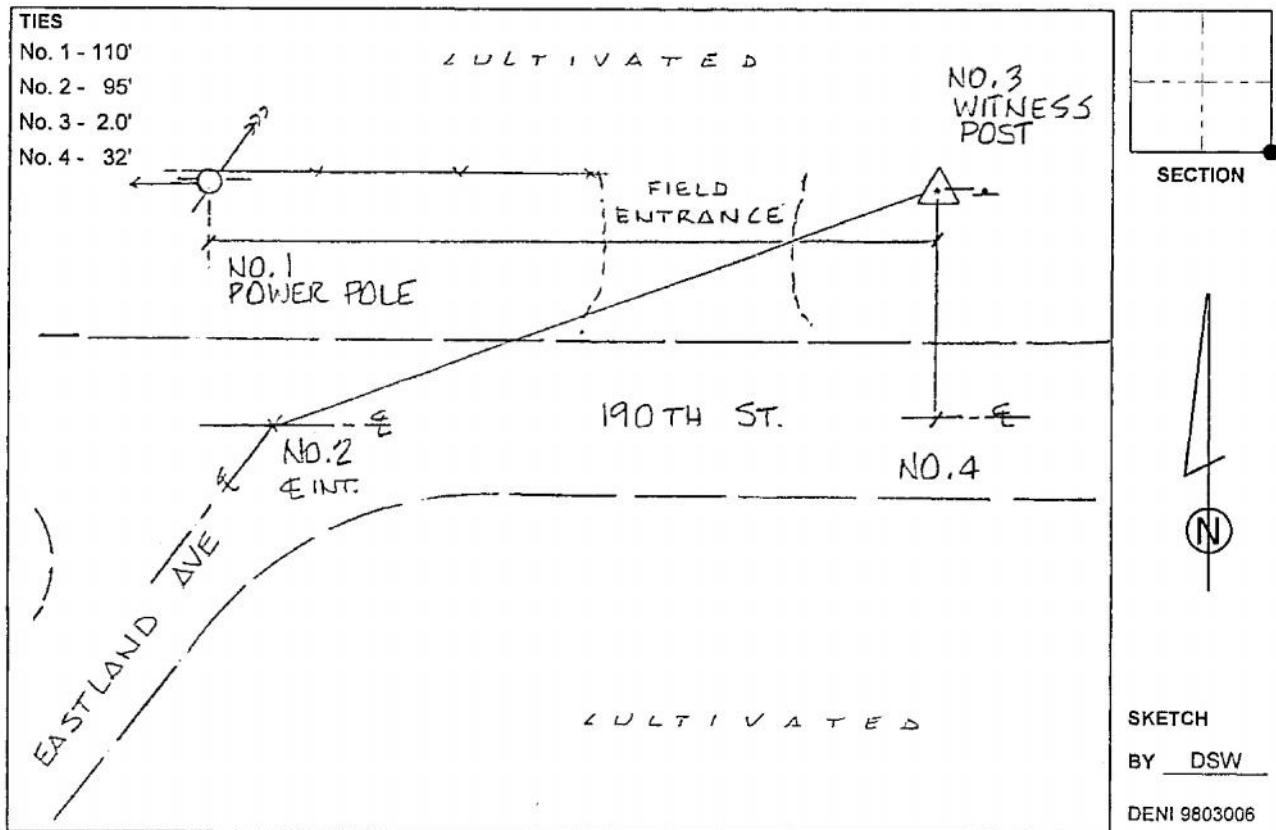
IaRCS Zone 4 Northing: **8565548.491sft**

Easting: **14132024.479sft**

Mapping Angle: **-00° 55' 17"**

Combination Scale Factor: **0.999996902**

Monument Type: 3-1/4" aluminum cap on aluminum rod in 6" PVC pipe with aluminum access cover.



This document was prepared by Dan Corbin, Inc. on March 6, 2015 for Woodbury County, Iowa.