

**Woodbury County, Iowa**

Horizontal Datum: **NAD 83(2011)** - Vertical Datum: **NAVD 1988**

Iowa State Plane North Zone (1401)

Iowa Regional Coordinate System Zone 4 Sioux City-Iowa Falls LCC

US Survey Feet

**2015**

Point Name: **8086**

GPS No. (1998): **8086**

**Designation:** 884604 1 (Set by DENI Associates in 1998)

NAD 83(NA2011) Latitude: **N42°28'28.98492"**

Longitude: **W96°11'38.10818"**

NAVD 88 Ortho Height: **1148.070**sft

Ellip. Ht: **1061.089**sft

**Geoid09**

Iowa North Zone (1401) Northing: **3647620.526**sft

Easting: **4194616.543**sft

Mapping Angle: **-1°49'33"**

Combination Scale Factor: **0.999900385**

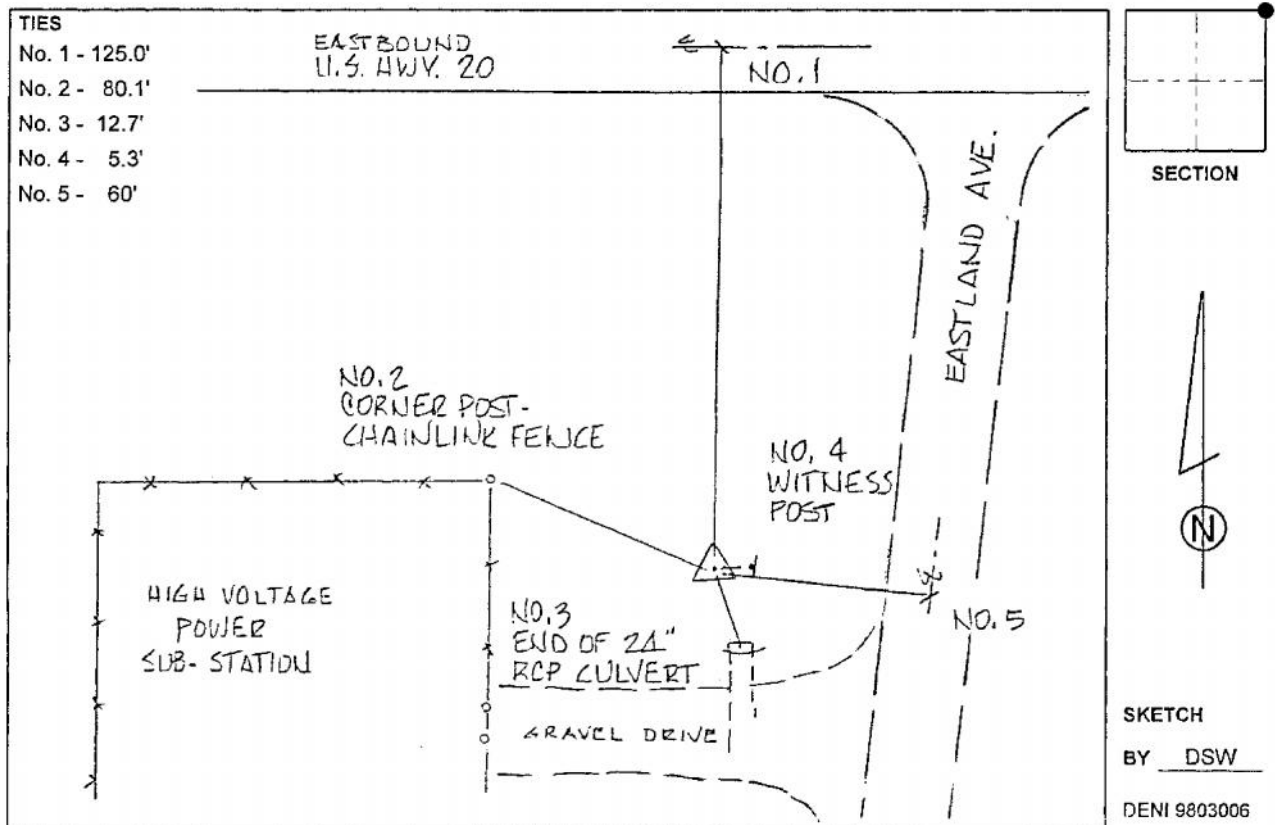
IaRCS Zone 4 Northing: **8581583.395**sft

Easting: **14132926.837**sft

Mapping Angle: **-00° 55' 11"**

Combination Scale Factor: **0.999994706**

**Monument Type:** 3-1/4" aluminum cap on aluminum rod in 6" PVC pipe with aluminum access cover.



*This document was prepared by Dan Corbin, Inc. on March 6, 2015 for Woodbury County, Iowa.*