

Woodbury County, Iowa

Horizontal Datum: **NAD 83(2011)** - Vertical Datum: **NAVD 1988**

Iowa State Plane North Zone (1401)

Iowa Regional Coordinate System Zone 4 Sioux City-Iowa Falls LCC

US Survey Feet

2015

Point Name: **8087**

GPS No. (1998): **8087**

Designation: 894624 1 (Set by DENI Associates in 1998)

NAD 83(NA2011) Latitude: **N42°31'07.29862"**

Longitude: **W96°12'52.88003"**

NAVD 88 Ortho Height: **1252.580sft**

Ellip. Ht: **1165.639sft**

Geoid09

Iowa North Zone (1401) Northing: **3663817.496sft**

Easting: **4189530.694sft**

Mapping Angle: **-1°50'24"**

Combination Scale Factor: **0.999893119**

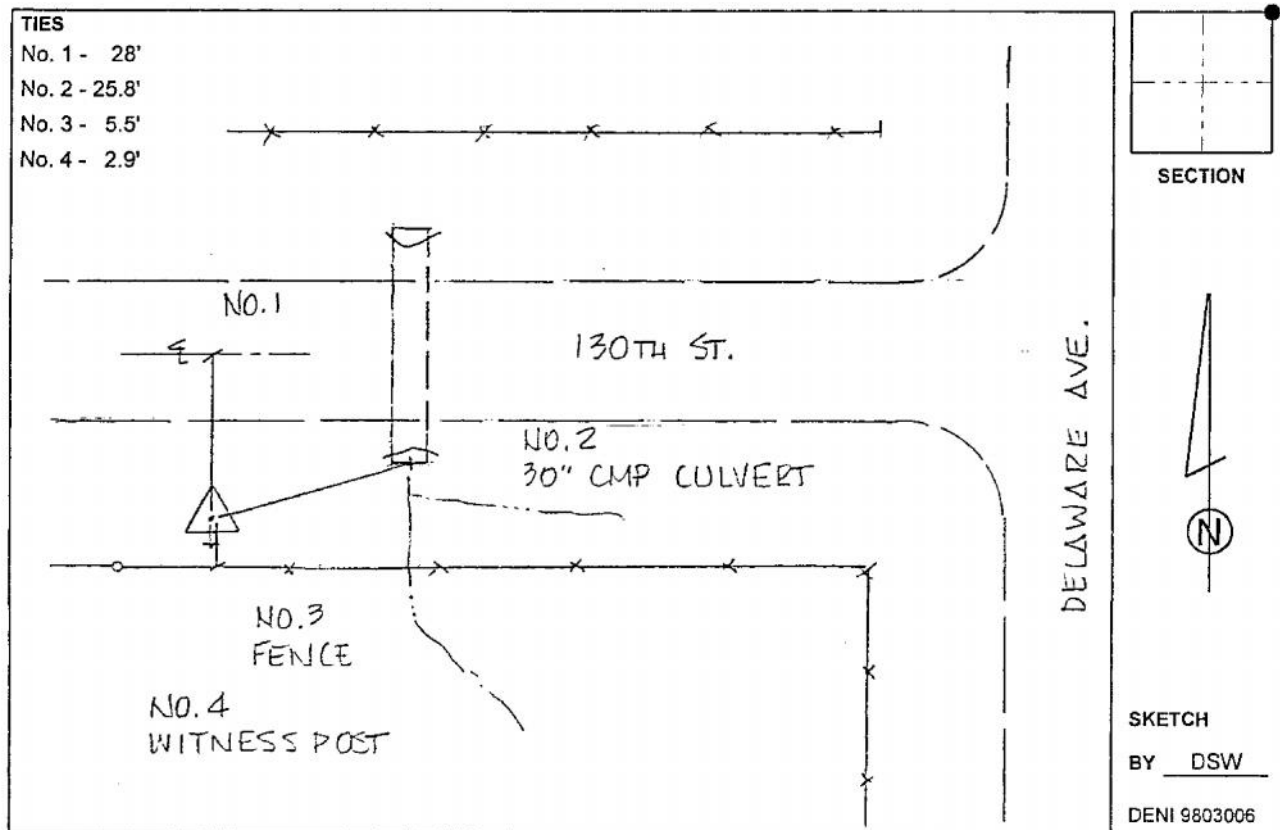
IaRCS Zone 4 Northing: **8597699.459sft**

Easting: **14127585.000sft**

Mapping Angle: **-00° 56' 02"**

Combination Scale Factor: **0.999989211**

Monument Type: 3-1/4" aluminum cap on aluminum rod in 6" PVC pipe with aluminum access cover.



This document was prepared by Dan Corbin, Inc. on March 6, 2015 for Woodbury County, Iowa.