

Woodbury County, Iowa

Horizontal Datum: **NAD 83(2011)** - Vertical Datum: **NAVD 1988**

Iowa State Plane North Zone (1401)

Iowa Regional Coordinate System Zone 4 Sioux City-Iowa Falls LCC

US Survey Feet

2015

Point Name: **8090**

GPS No. (1998): **8090**

Designation: 894615 3 (Set by DENI Associates in 1998)

NAD 83(NA2011) Latitude: **N42°31'07.69656"**

Longitude: **W96°16'04.44764"**

NAVD 88 Ortho Height: **1379.560sft**

Ellip. Ht: **1292.908sft**

Geoid09

Iowa North Zone (1401) Northing: **3664322.854sft**

Easting: **4175193.956sft**

Mapping Angle: **-1°52'33"**

Combination Scale Factor: **0.999887043**

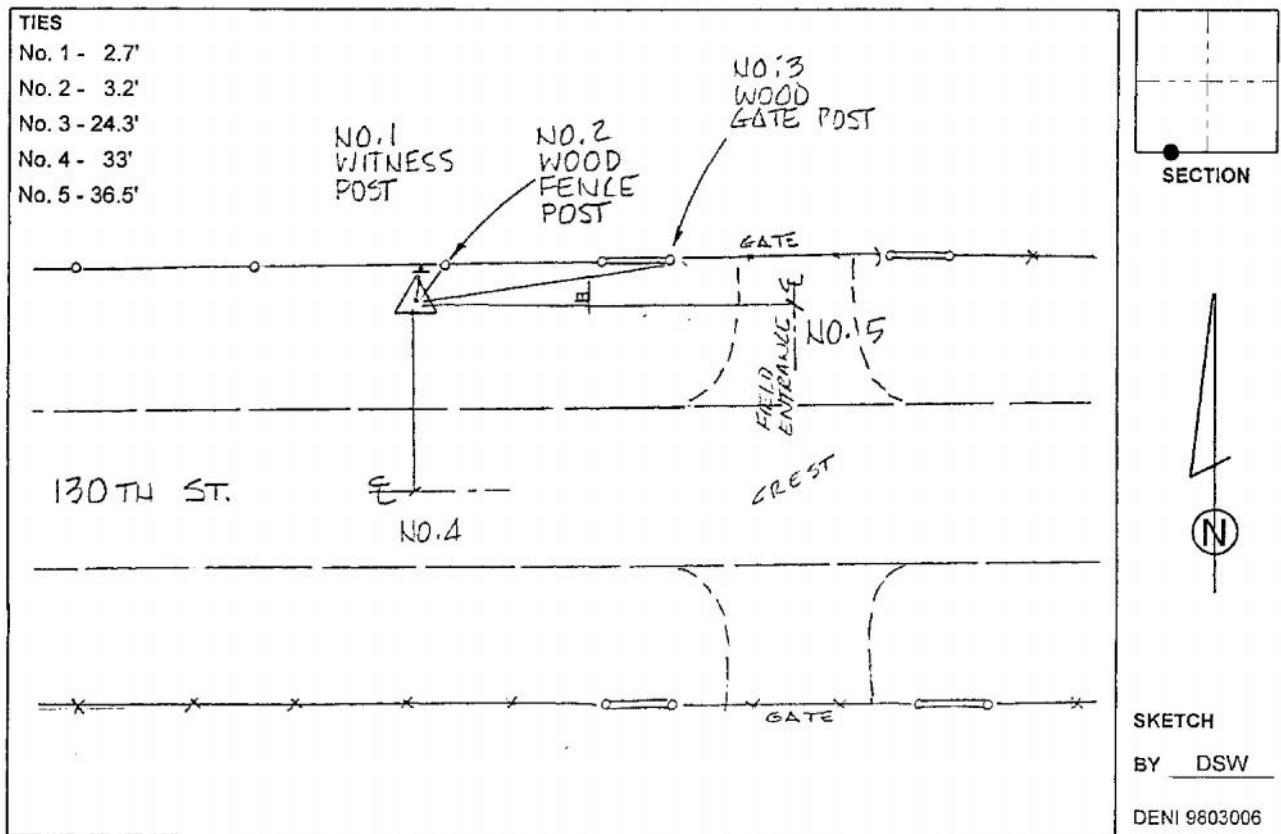
IaRCS Zone 4 Northing: **8597978.065sft**

Easting: **14113240.682sft**

Mapping Angle: **-00° 58' 11"**

Combination Scale Factor: **0.999983116**

Monument Type: 3-1/4" aluminum cap on aluminum rod in 6" PVC pipe with aluminum access cover.



This document was prepared by Dan Corbin, Inc. on March 6, 2015 for Woodbury County, Iowa.