

**Woodbury County, Iowa**

Horizontal Datum: **NAD 83(2011)** - Vertical Datum: **NAVD 1988**

Iowa State Plane North Zone (1401)

Iowa Regional Coordinate System Zone 4 Sioux City-Iowa Falls LCC

US Survey Feet

**2015**

Point Name: **8091**

GPS No. (1998): **8091**

**Designation:** 884701 1 (Set by DENI Associates in 1998)

NAD 83(NA2011) Latitude: **N42°28'23.87611"**

Longitude: **W96°15'08.87114"**

NAVD 88 Ortho Height: **1137.600**sft

Ellip. Ht: **1050.926**sft

**Geoid09**

Iowa North Zone (1401) Northing: **3647612.317**sft

Easting: **4178813.755**sft

Mapping Angle: **-1°51'56"**

Combination Scale Factor: **0.999900953**

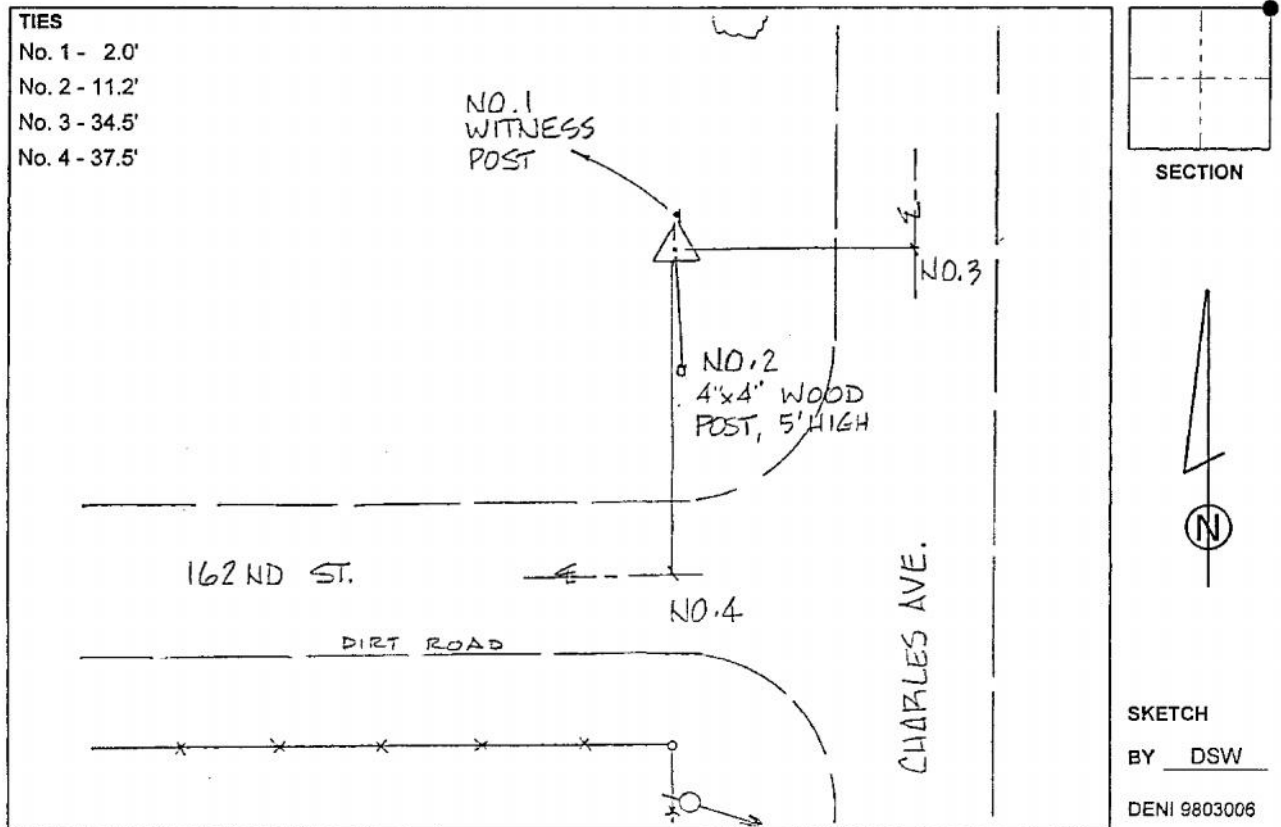
IaRCS Zone 4 Northing: **8581325.273**sft

Easting: **14117124.662**sft

Mapping Angle: **-00° 57' 34"**

Combination Scale Factor: **0.999995218**

**Monument Type:** 3-1/4" aluminum cap on aluminum rod in 6" PVC pipe with aluminum access cover.



*This document was prepared by Dan Corbin, Inc. on March 6, 2015 for Woodbury County, Iowa.*