

Woodbury County, Iowa

Horizontal Datum: **NAD 83(2011)** - Vertical Datum: **NAVD 1988**

Iowa State Plane North Zone (1401)

Iowa Regional Coordinate System Zone 4 Sioux City-Iowa Falls LCC

US Survey Feet

2015

Point Name: **8092**

GPS No. (1998): **8092**

Designation: 884618 3 (Set by DENI Associates in 1998)

NAD 83(NA2011) Latitude: **N42°26'01.03886"**

Longitude: **W96°15'09.66933"**

NAVD 88 Ortho Height: **1117.730sft**

Ellip. Ht: **1031.132sft**

Geoid09

Iowa North Zone (1401) Northing: **3633162.653sft**

Easting: **4178283.243sft**

Mapping Angle: **-1°51'56"**

Combination Scale Factor: **0.999904472**

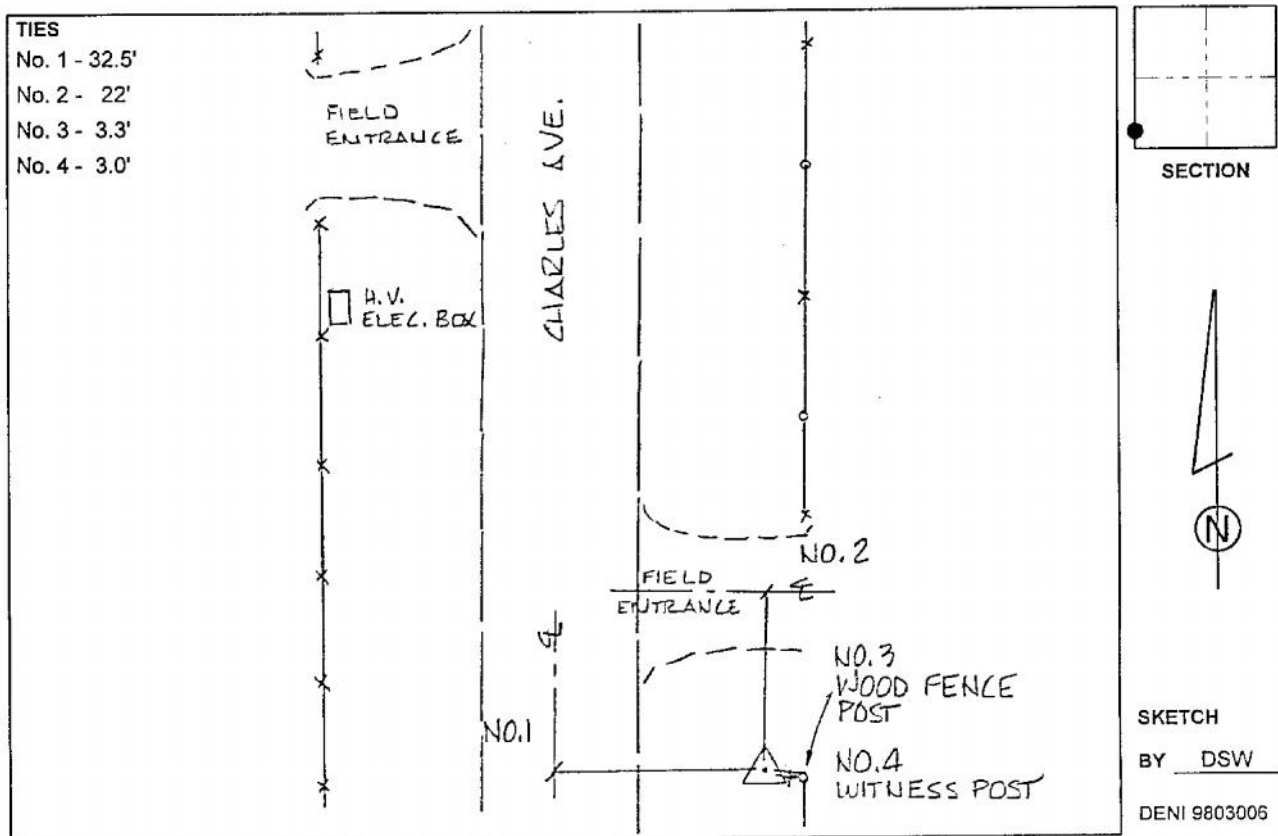
IaRCS Zone 4 Northing: **8566867.673sft**

Easting: **14116822.694sft**

Mapping Angle: **-00° 57' 34"**

Combination Scale Factor: **0.999997127**

Monument Type: 3-1/4" aluminum cap on aluminum rod in 6" PVC pipe with aluminum access cover.



This document was prepared by Dan Corbin, Inc. on March 6, 2015 for Woodbury County, Iowa.