

**Woodbury County, Iowa**

Horizontal Datum: **NAD 83(2011)** - Vertical Datum: **NAVD 1988**

Iowa State Plane North Zone (1401)

Iowa Regional Coordinate System Zone 4 Sioux City-Iowa Falls LCC

US Survey Feet

**2015**

Point Name: **8093**

GPS No. (1998): **8093**

**Designation:** 874701 1 (Set by DENI Associates in 1998)

NAD 83(NA2011) Latitude: **N42°23'16.49742"**

Longitude: **W96°15'12.05075"**

NAVD 88 Ortho Height: **1080.850sft**

Ellip. Ht: **994.295sft**

**Geoid09**

Iowa North Zone (1401) Northing: **3616521.005sft**

Easting: **4177562.378sft**

Mapping Angle: **-1°51'58"**

Combination Scale Factor: **0.999909785**

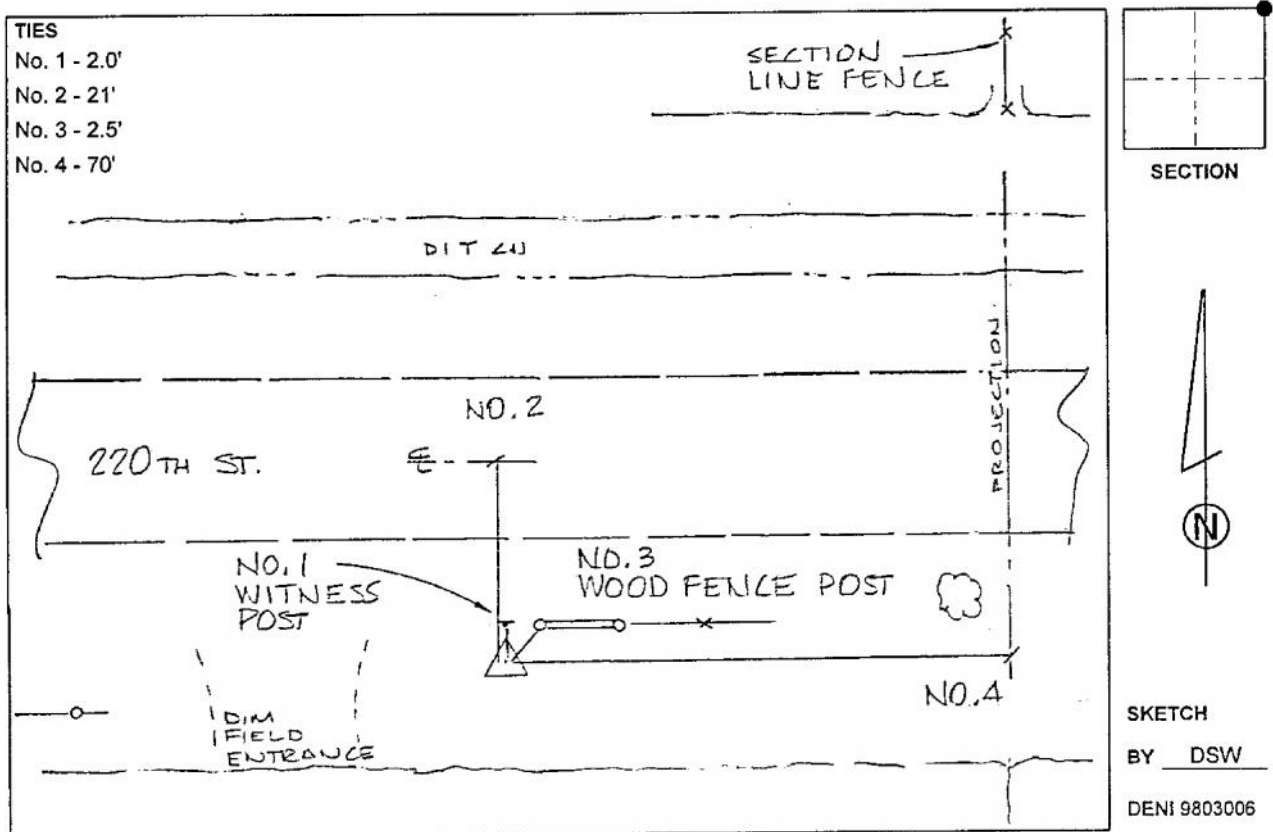
IaRCS Zone 4 Northing: **8550215.176sft**

Easting: **14116365.047sft**

Mapping Angle: **-00° 57' 36"**

Combination Scale Factor: **1.000000589**

**Monument Type:** 3-1/4" aluminum cap on aluminum rod in 6" PVC pipe with aluminum access cover.



*This document was prepared by Dan Corbin, Inc. on March 6, 2015 for Woodbury County, Iowa.*