

Woodbury County, Iowa

Horizontal Datum: **NAD 83(2011)** - Vertical Datum: **NAVD 1988**

Iowa State Plane North Zone (1401)

Iowa Regional Coordinate System Zone 4 Sioux City-Iowa Falls LCC

US Survey Feet

2015

Point Name: **8094**

GPS No. (1998): **8094**

Designation: 874618 3 (Set by DENI Associates in 1998)

NAD 83(NA2011) Latitude: **N42°20'39.96563"**

Longitude: **W96°15'01.70773"**

NAVD 88 Ortho Height: **1079.560sft**

Ellip. Ht: **992.992sft**

Geoid09

Iowa North Zone (1401) Northing: **3600658.705sft**

Easting: **4177822.687sft**

Mapping Angle: **-1°51'51"**

Combination Scale Factor: **0.999913815**

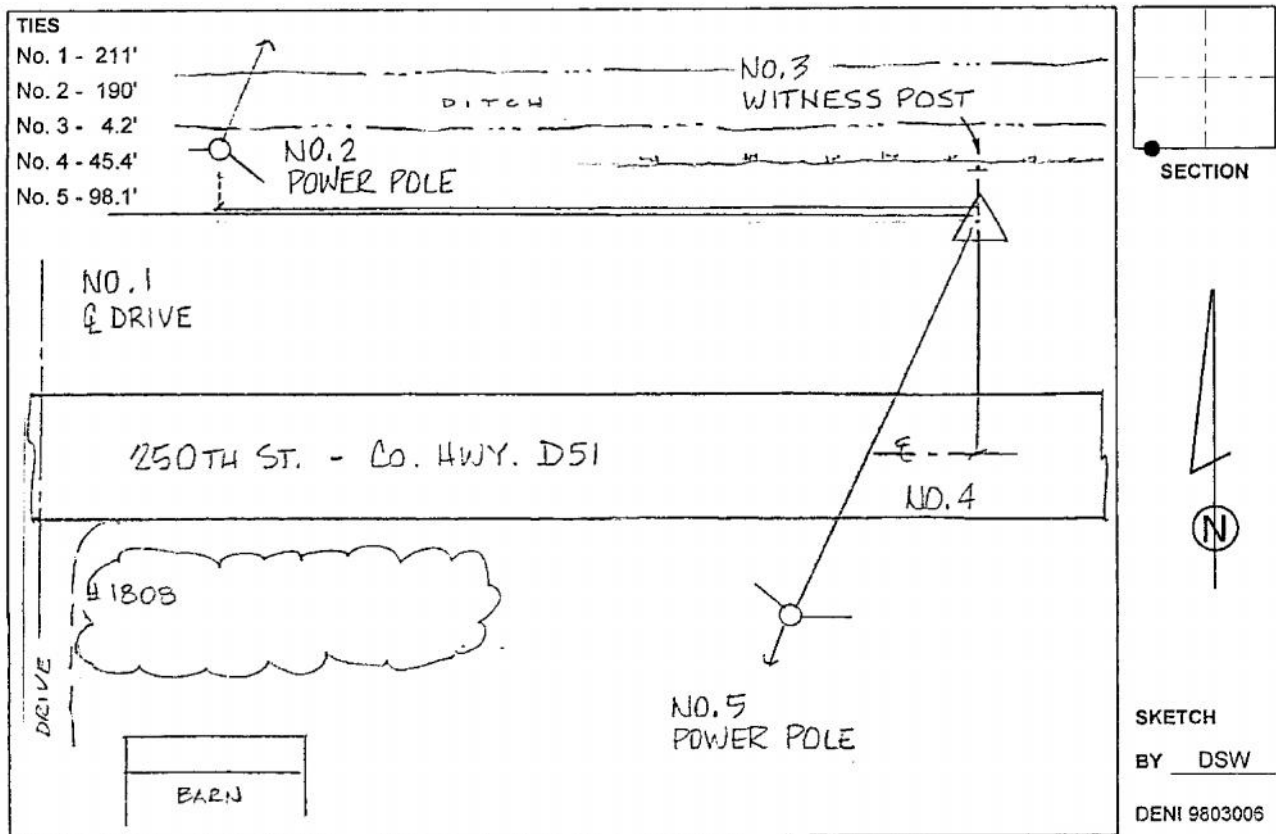
IaRCS Zone 4 Northing: **8534357.546sft**

Easting: **14116876.214sft**

Mapping Angle: **-00° 57' 29"**

Combination Scale Factor: **1.000002854**

Monument Type: 3-1/4" aluminum cap on aluminum rod in 6" PVC pipe with aluminum access cover.



This document was prepared by Dan Corbin, Inc. on March 6, 2015 for Woodbury County, Iowa.