

Woodbury County, Iowa

Horizontal Datum: **NAD 83(2011)** - Vertical Datum: **NAVD 1988**

Iowa State Plane North Zone (1401)

Iowa Regional Coordinate System Zone 4 Sioux City-Iowa Falls LCC

US Survey Feet

2015

Point Name: **8097**

GPS No. (1998): **8097**

Designation: 864736 2 (Set by DENI Associates in 1998)

NAD 83(NA2011) Latitude: **N42°12'53.14023"**

Longitude: **W96°15'06.19334"**

NAVD 88 Ortho Height: **1071.190sft**

Ellip. Ht: **984.364sft**

Geoid09

Iowa North Zone (1401) Northing: **3553439.097sft**

Easting: **4175948.137sft**

Mapping Angle: **-1°51'54"**

Combination Scale Factor: **0.999929450**

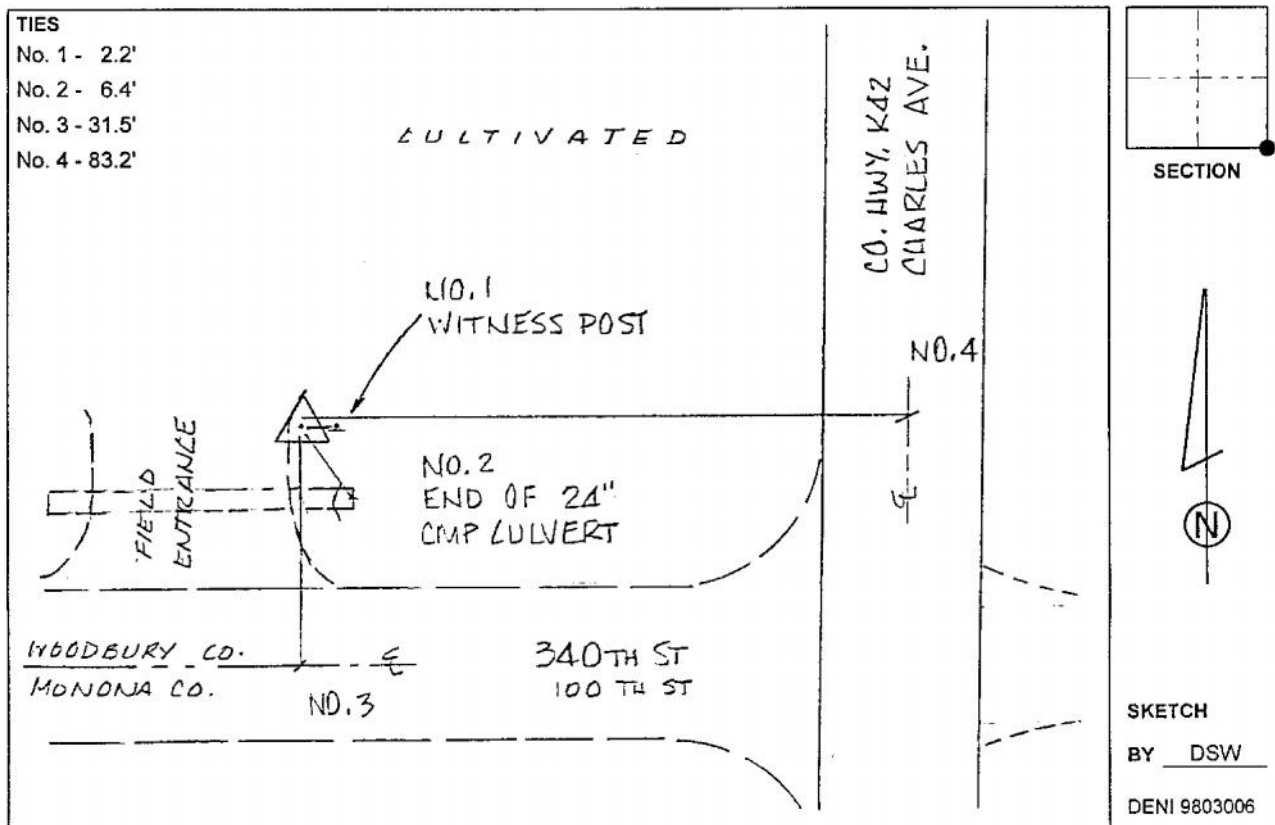
laRCS Zone 4 Northing: **8487110.109sft**

Easting: **14115748.525sft**

Mapping Angle: **-00° 57' 32"**

Combination Scale Factor: **1.000013231**

Monument Type: 3-1/4" aluminum cap on aluminum rod in 6" PVC pipe with aluminum access cover.



This document was prepared by Dan Corbin, Inc. on March 6, 2015 for Woodbury County, Iowa.