

Woodbury County, Iowa

Horizontal Datum: **NAD 83(2011)** - Vertical Datum: **NAVD 1988**

Iowa State Plane North Zone (1401)

Iowa Regional Coordinate System Zone 4 Sioux City-Iowa Falls LCC

US Survey Feet

2015

Point Name: **8098**

GPS No. (1998): **8098**

Designation: 864733 2 (Set by DENI Associates in 1998)

NAD 83(NA2011) Latitude: **N42°12'53.81319"**

Longitude: **W96°18'34.88520"**

NAVD 88 Ortho Height: **1064.340sft**

Ellip. Ht: **978.100sft**

Geoid09

Iowa North Zone (1401) Northing: **3554023.631sft**

Easting: **4160254.992sft**

Mapping Angle: **-1°54'15"**

Combination Scale Factor: **0.999929723**

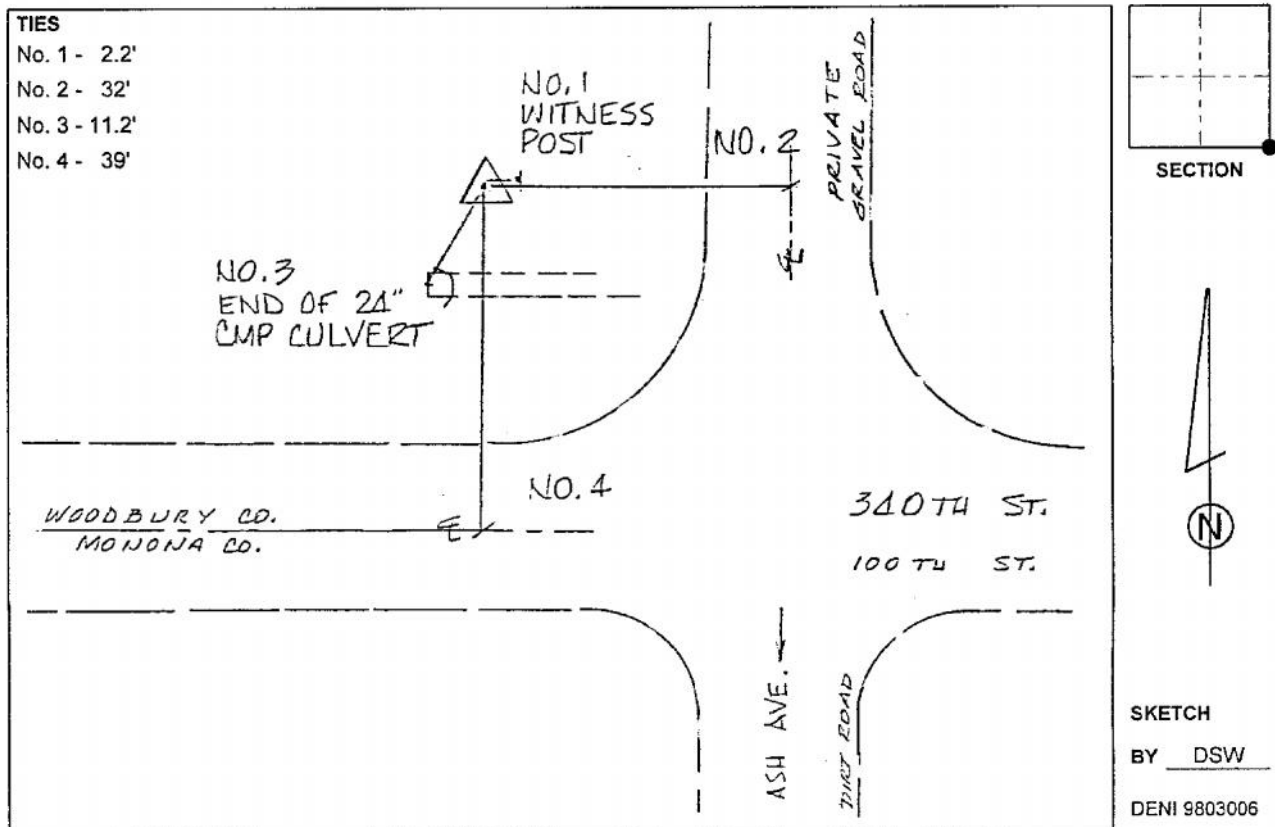
IaRCS Zone 4 Northing: **8487446.414sft**

Easting: **14100046.780sft**

Mapping Angle: **-00° 59' 53"**

Combination Scale Factor: **1.000013513**

Monument Type: 3-1/4" aluminum cap on aluminum rod in 6" PVC pipe with aluminum access cover.



This document was prepared by Dan Corbin, Inc. on March 6, 2015 for Woodbury County, Iowa.