

**Woodbury County, Iowa**

Horizontal Datum: **NAD 83(2011)** - Vertical Datum: **NAVD 1988**

Iowa State Plane North Zone (1401)

Iowa Regional Coordinate System Zone 4 Sioux City-Iowa Falls LCC

US Survey Feet

**2015**

Point Name: **8099**

GPS No. (1998): **8099**

**Designation:** 864722 4 (Set by DENI Associates in 1998)

NAD 83(NA2011) Latitude: **N42°15'27.48980"**

Longitude: **W96°18'15.65322"**

NAVD 88 Ortho Height: **1075.820sft**

Ellip. Ht: **989.628sft**

**Geoid09**

Iowa North Zone (1401) Northing: **3569523.301sft**

Easting: **4162217.324sft**

Mapping Angle: **-1°54'02"**

Combination Scale Factor: **0.999923604**

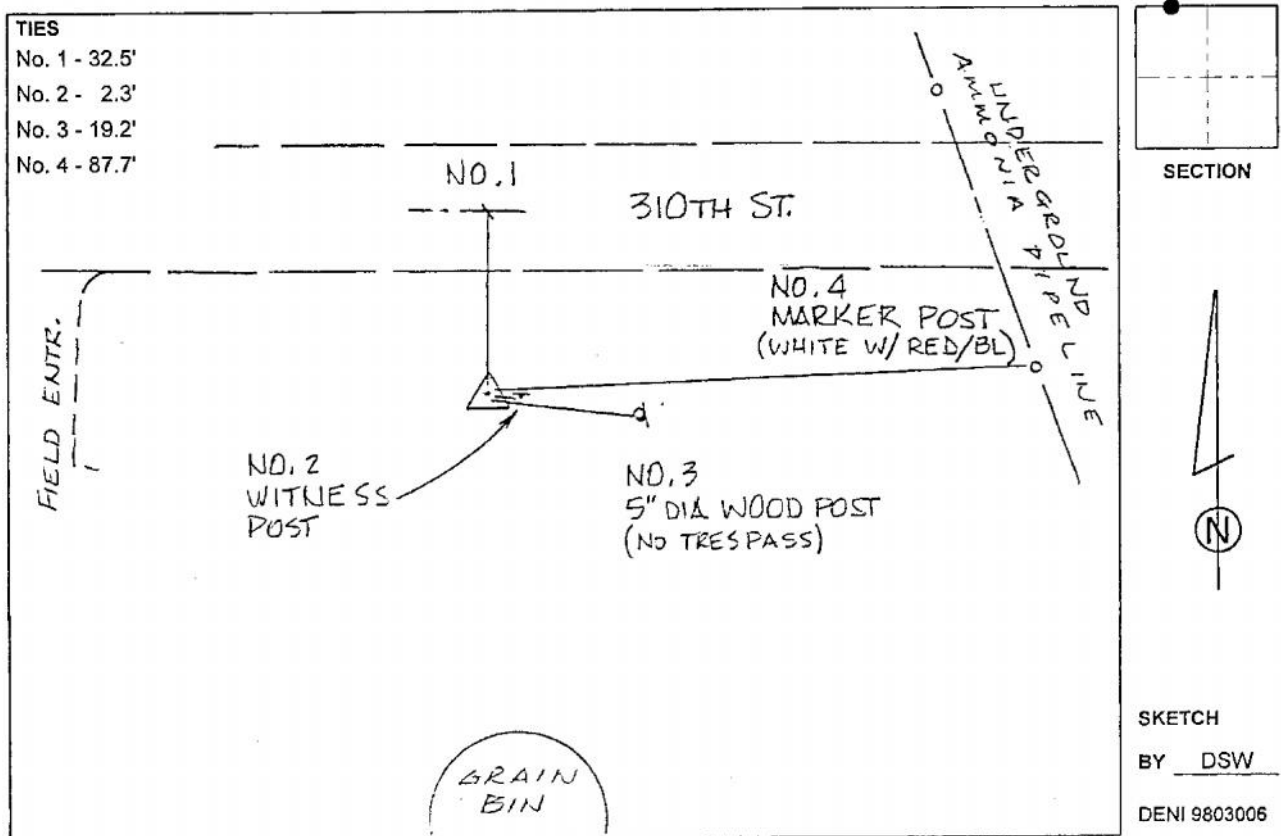
IaRCS Zone 4 Northing: **8502976.498sft**

Easting: **14101763.877sft**

Mapping Angle: **-00° 59' 40"**

Combination Scale Factor: **1.000009122**

**Monument Type:** 3-1/4" aluminum cap on aluminum rod in 6" PVC pipe with aluminum access cover.



*This document was prepared by Dan Corbin, Inc. on March 6, 2015 for Woodbury County, Iowa.*