

**Woodbury County, Iowa**

Horizontal Datum: **NAD 83(2011)** - Vertical Datum: **NAVD 1988**

Iowa State Plane North Zone (1401)

Iowa Regional Coordinate System Zone 4 Sioux City-Iowa Falls LCC

US Survey Feet

**2015**

Point Name: **8100**

GPS No. (1998): **8100**

**Designation:** 864704 1 (Set by DENI Associates in 1998)

NAD 83(NA2011) Latitude: **N42°18'04.02264"**

Longitude: **W96°18'35.05831"**

NAVD 88 Ortho Height: **1083.750sft**

Ellip. Ht: **997.681sft**

**Geoid09**

Iowa North Zone (1401) Northing: **3585408.427sft**

Easting: **4161285.449sft**

Mapping Angle: **-1°54'15"**

Combination Scale Factor: **0.999918113**

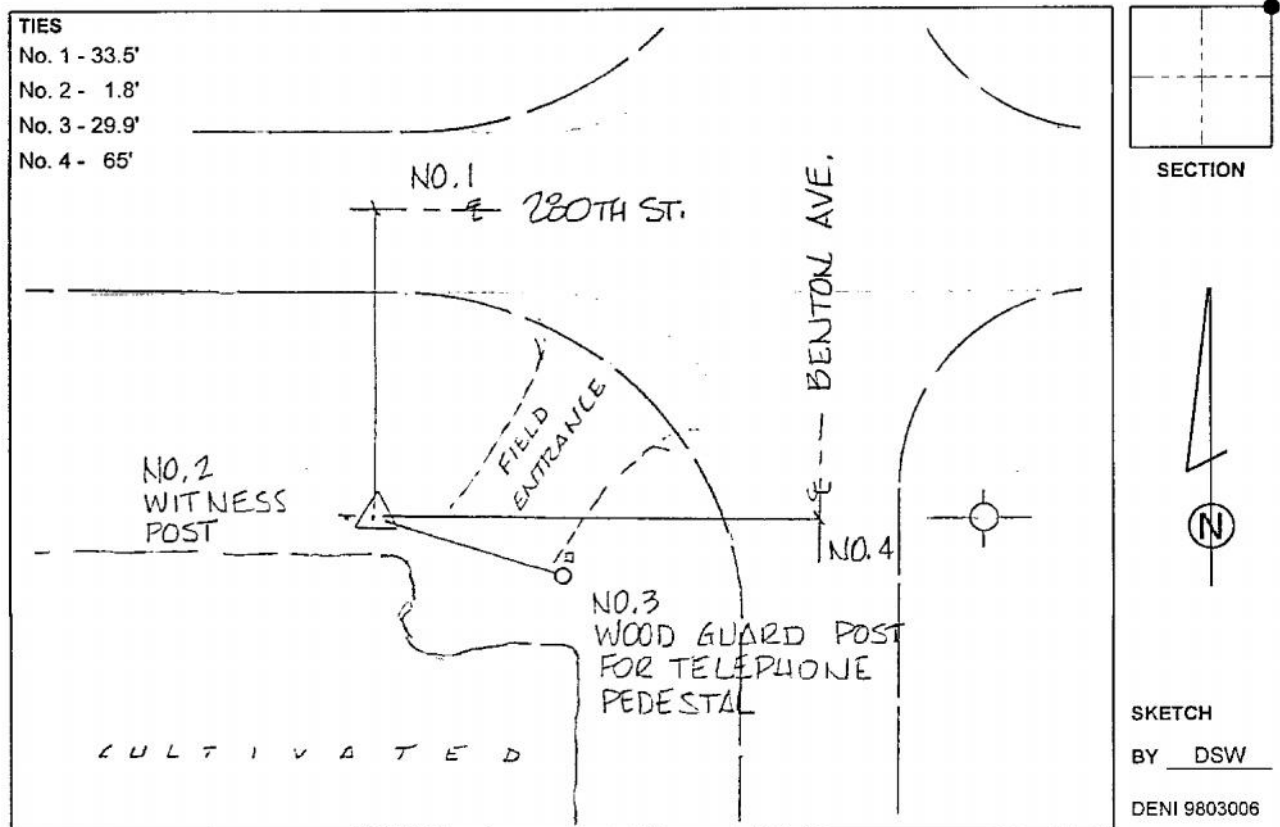
IaRCS Zone 4 Northing: **8518846.275sft**

Easting: **14100580.784sft**

Mapping Angle: **-00° 59' 53"**

Combination Scale Factor: **1.000005392**

**Monument Type:** 3-1/4" aluminum cap on aluminum rod in 6" PVC pipe with aluminum access cover.



*This document was prepared by Dan Corbin, Inc. on March 6, 2015 for Woodbury County, Iowa.*