

Woodbury County, Iowa

Horizontal Datum: **NAD 83(2011)** - Vertical Datum: **NAVD 1988**

Iowa State Plane North Zone (1401)

Iowa Regional Coordinate System Zone 4 Sioux City-Iowa Falls LCC

US Survey Feet

2015

Point Name: **8101**

GPS No. (1998): **8101**

Designation: 874716 2 (Set by DENI Associates in 1998)

NAD 83(NA2011) Latitude: **N42°20'42.58082"**

Longitude: **W96°18'46.46356"**

NAVD 88 Ortho Height: **1082.330sft**

Ellip. Ht: **996.302sft**

Geoid09

Iowa North Zone (1401) Northing: **3601478.540sft**

Easting: **4160962.824sft**

Mapping Angle: **-1°54'23"**

Combination Scale Factor: **0.999913586**

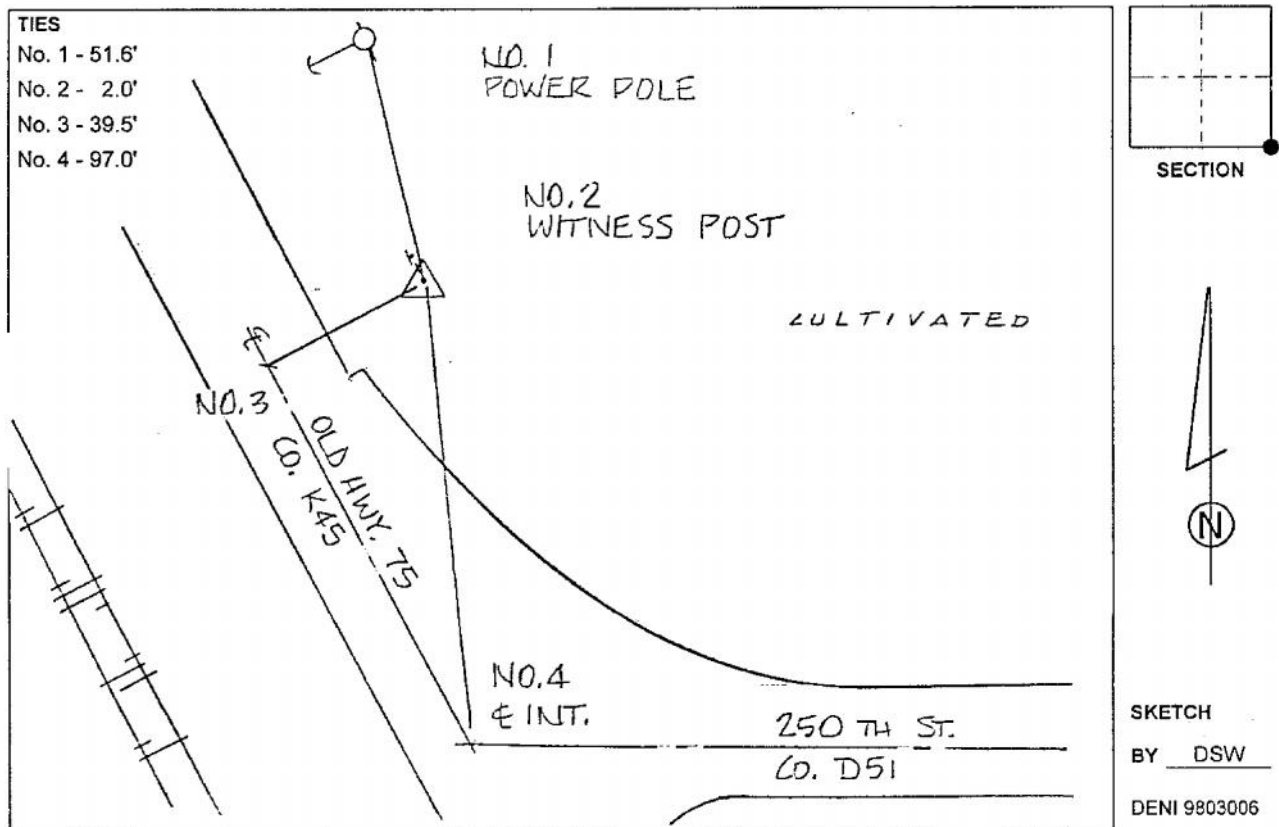
IaRCS Zone 4 Northing: **8534910.693sft**

Easting: **14100003.988sft**

Mapping Angle: **-01° 00' 01"**

Combination Scale Factor: **1.000002654**

Monument Type: 3-1/4" aluminum cap on aluminum rod in 6" PVC pipe with aluminum access cover.



This document was prepared by Dan Corbin, Inc. on March 6, 2015 for Woodbury County, Iowa.