

Woodbury County, Iowa

Horizontal Datum: **NAD 83(2011)** - Vertical Datum: **NAVD 1988**

Iowa State Plane North Zone (1401)

Iowa Regional Coordinate System Zone 4 Sioux City-Iowa Falls LCC

US Survey Feet

2015

Point Name: **8102**

GPS No. (1998): **8102**

Designation: 874703 4 (Set by DENI Associates in 1998)

NAD 83(NA2011) Latitude: **N42°23'12.09667"**

Longitude: **W96°18'26.79410"**

NAVD 88 Ortho Height: **1085.090sft**

Ellip. Ht: **998.958sft**

Geoid09

Iowa North Zone (1401) Northing: **3616556.320sft**

Easting: **4162941.580sft**

Mapping Angle: **-1°54'10"**

Combination Scale Factor: **0.999909666**

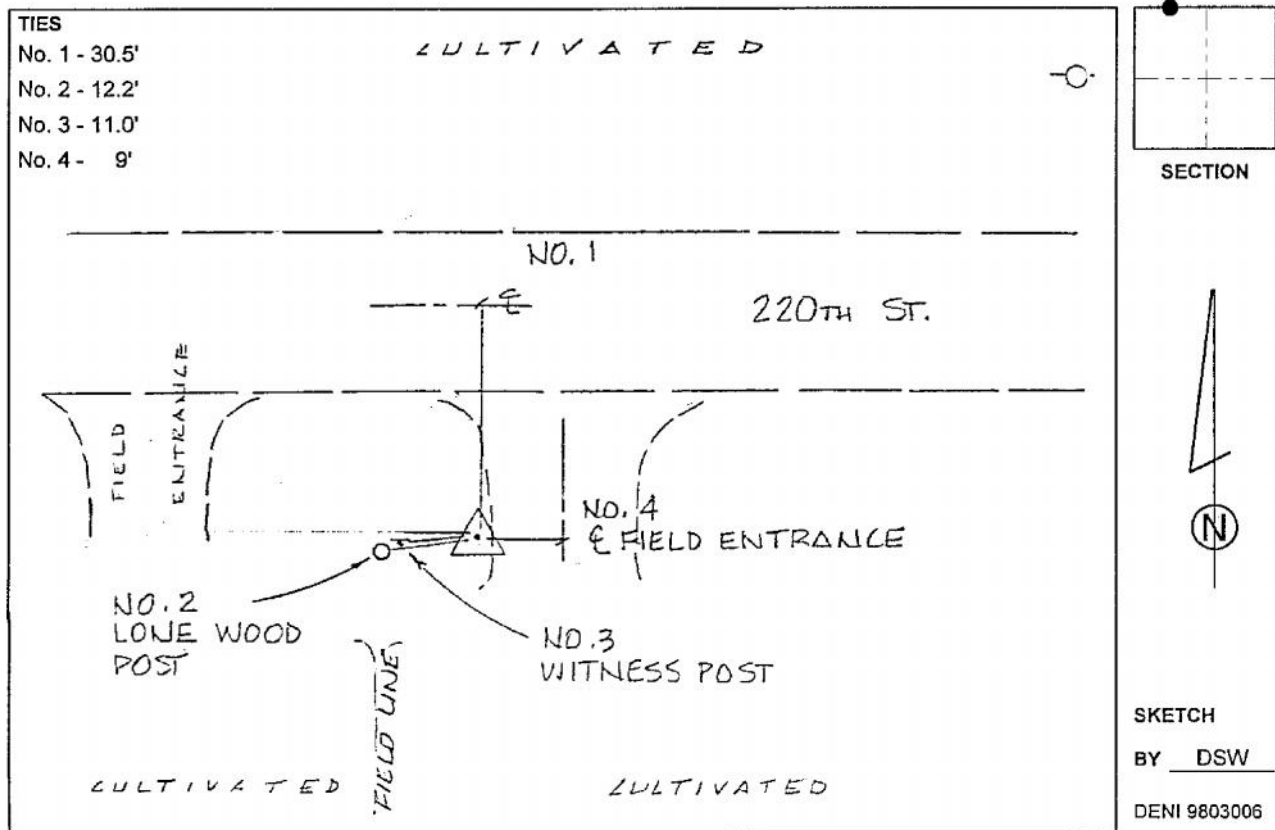
IaRCS Zone 4 Northing: **8550019.244sft**

Easting: **14101744.189sft**

Mapping Angle: **-00° 59' 47"**

Combination Scale Factor: **1.000000420**

Monument Type: 3-1/4" aluminum cap on aluminum rod in 6" PVC pipe with aluminum access cover.



This document was prepared by Dan Corbin, Inc. on March 6, 2015 for Woodbury County, Iowa.