

Woodbury County, Iowa

Horizontal Datum: **NAD 83(2011)** - Vertical Datum: **NAVD 1988**
Iowa State Plane North Zone (1401)
Iowa Regional Coordinate System Zone 4 Sioux City-Iowa Falls LCC
US Survey Feet
2015

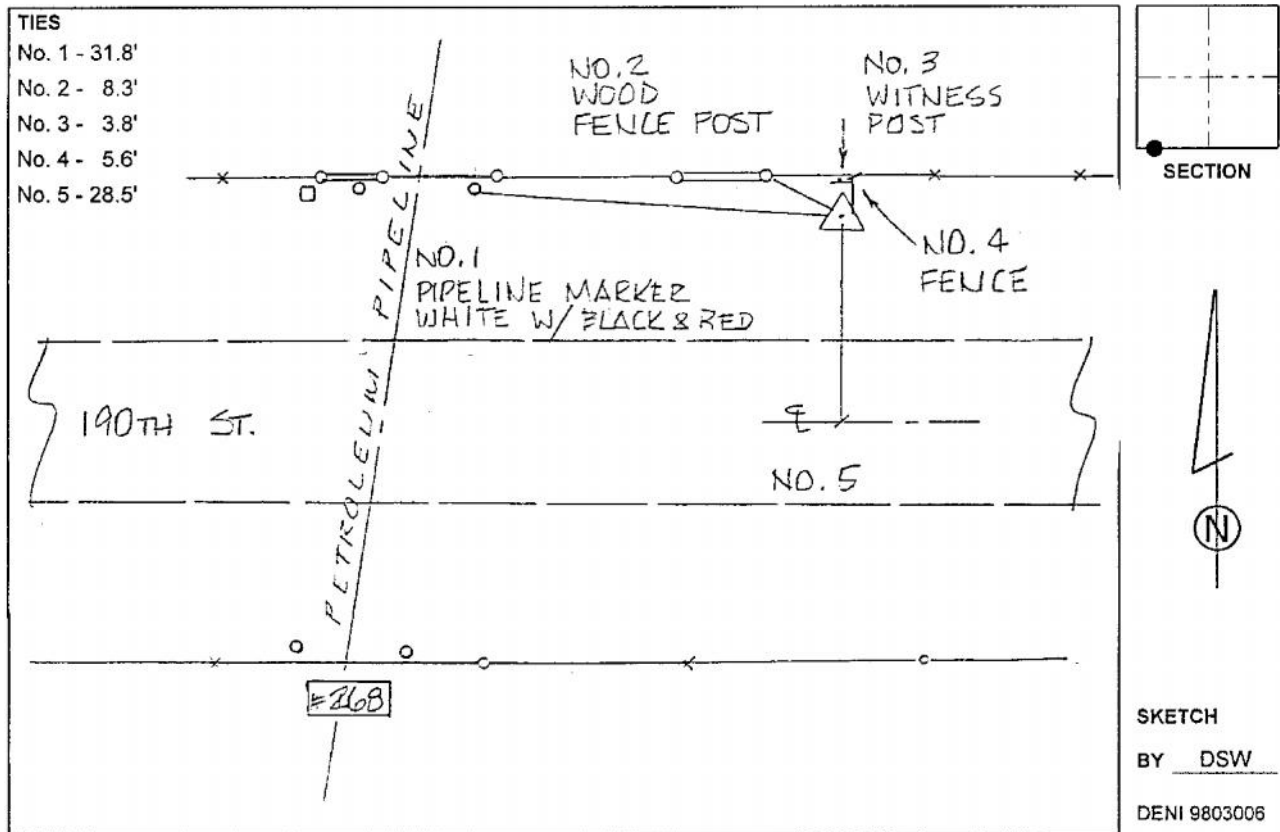
Point Name: **8103** GPS No. (1998): **8103**
Designation: 884715 3 (Set by DENI Associates in 1998)

NAD 83(NA2011) Latitude: **N42°25'50.22499"** Longitude: **W96°18'35.77656"**
NAVD 88 Ortho Height: **1149.430sft** Ellip. Ht: **1063.235sft** **Geoid09**

Iowa North Zone (1401) Northing: **3632576.971sft** Easting: **4162799.830sft**
Mapping Angle: **-1°54'16"** Combination Scale Factor: **0.999903155**

IaRCS Zone 4 Northing: **8566037.120sft** Easting: **14101349.044sft**
Mapping Angle: **-00° 59' 54"** Combination Scale Factor: **0.999995681**

Monument Type: 3-1/4" aluminum cap on aluminum rod in 6" PVC pipe with aluminum access cover.



This document was prepared by Dan Corbin, Inc. on March 6, 2015 for Woodbury County, Iowa.