

**Woodbury County, Iowa**

Horizontal Datum: **NAD 83(2011)** - Vertical Datum: **NAVD 1988**

Iowa State Plane North Zone (1401)

Iowa Regional Coordinate System Zone 4 Sioux City-Iowa Falls LCC

US Survey Feet

**2015**

Point Name: **8104**

GPS No. (1998): **8104**

**Designation:** 894632 3 (Set by DENI Associates in 1998)

NAD 83(NA2011) Latitude: **N42°28'34.97817"**

Longitude: **W96°18'25.99375"**

NAVD 88 Ortho Height: **1309.110sft**

Ellip. Ht: **1222.797sft**

**Geoid09**

Iowa North Zone (1401) Northing: **3649221.211sft**

Easting: **4164086.751sft**

Mapping Angle: **-1°54'09"**

Combination Scale Factor: **0.999892573**

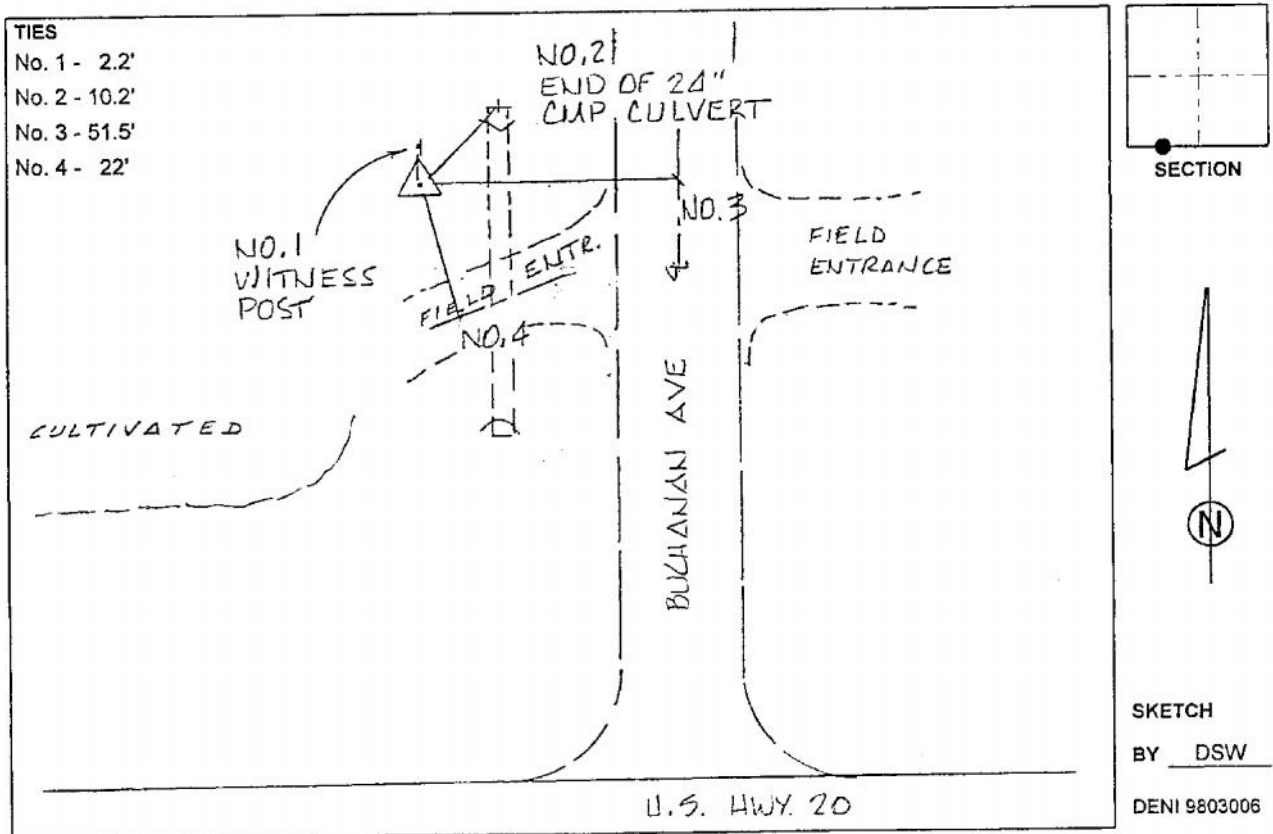
IaRCS Zone 4 Northing: **8582701.193sft**

Easting: **14102372.662sft**

Mapping Angle: **-00° 59' 47"**

Combination Scale Factor: **0.999986933**

**Monument Type:** 3-1/4" aluminum cap on aluminum rod in 6" PVC pipe with aluminum access cover.



*This document was prepared by Dan Corbin, Inc. on March 6, 2015 for Woodbury County, Iowa.*