

Woodbury County, Iowa

Horizontal Datum: **NAD 83(2011)** - Vertical Datum: **NAVD 1988**

Iowa State Plane North Zone (1401)

Iowa Regional Coordinate System Zone 4 Sioux City-Iowa Falls LCC

US Survey Feet

2015

Point Name: **8108**

GPS No. (1998): **8108**

Designation: 894722 4 (Set by DENI Associates in 1998)

NAD 83(NA2011) Latitude: **N42°31'09.37432"**

Longitude: **W96°23'23.04092"**

NAVD 88 Ortho Height: **1159.620sft**

Ellip. Ht: **1073.888sft**

Geoid09

Iowa North Zone (1401) Northing: **3665591.411sft**

Easting: **4142374.016sft**

Mapping Angle: **-1°57'31"**

Combination Scale Factor: **0.999897470**

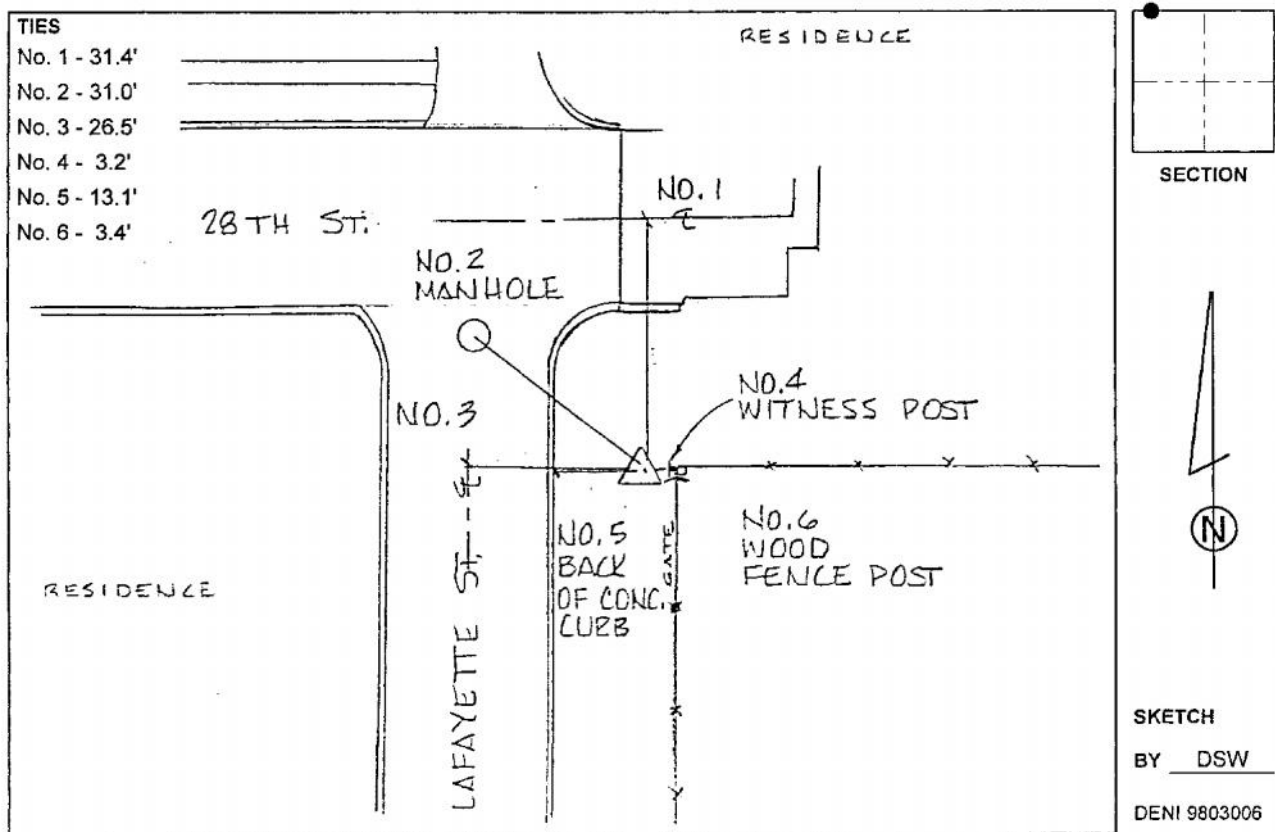
IaRCS Zone 4 Northing: **8598727.447sft**

Easting: **14080401.622sft**

Mapping Angle: **-01° 03' 08"**

Combination Scale Factor: **0.999993602**

Monument Type: 3-1/4" aluminum cap on aluminum rod in 6" PVC pipe with aluminum access cover.



This document was prepared by Dan Corbin, Inc. on March 6, 2015 for Woodbury County, Iowa.