

Woodbury County, Iowa

Horizontal Datum: **NAD 83(2011)** - Vertical Datum: **NAVD 1988**

Iowa State Plane North Zone (1401)

Iowa Regional Coordinate System Zone 4 Sioux City-Iowa Falls LCC

US Survey Feet

2015

Point Name: **8109**

GPS No. (1998): **8109**

Designation: 894734 2 (Set by DENI Associates in 1998)

NAD 83(NA2011) Latitude: **N42°28'39.88019"**

Longitude: **W96°22'48.15701"**

NAVD 88 Ortho Height: **1133.123sft**

Ellip. Ht: **1047.382sft**

Geoid09

Iowa North Zone (1401) Northing: **3650377.840sft**

Easting: **4144469.310sft**

Mapping Angle: **-1°57'07"**

Combination Scale Factor: **0.999900863**

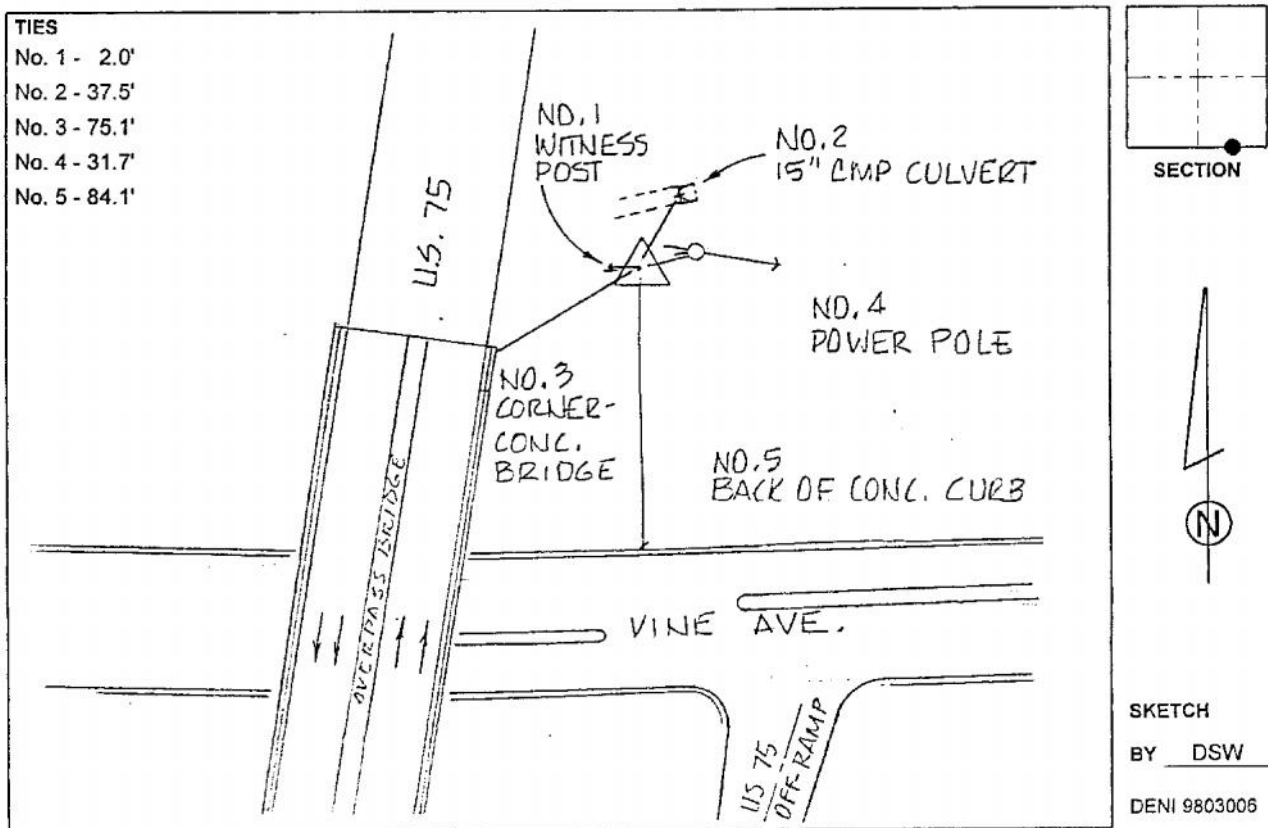
laRCS Zone 4 Northing: **8583547.475sft**

Easting: **14082737.522sft**

Mapping Angle: **-01° 02' 44"**

Combination Scale Factor: **0.999995310**

Monument Type: 3-1/4" aluminum cap on aluminum rod in 6" PVC pipe with aluminum access cover.



This document was prepared by Dan Corbin, Inc. on March 6, 2015 for Woodbury County, Iowa.