

Woodbury County, Iowa

Horizontal Datum: **NAD 83(2011)** - Vertical Datum: **NAVD 1988**

Iowa State Plane North Zone (1401)

Iowa Regional Coordinate System Zone 4 Sioux City-Iowa Falls LCC

US Survey Feet

2015

Point Name: **8112**

GPS No. (1998): **8112**

Designation: 874717 3 (Set by DENI Associates in 1998)

NAD 83(NA2011) Latitude: **N42°20'41.03768"**

Longitude: **W96°20'59.66035"**

NAVD 88 Ortho Height: **1085.830sft**

Ellip. Ht: **1000.085sft**

Geoid09

Iowa North Zone (1401) Northing: **3601657.352sft**

Easting: **4150961.009sft**

Mapping Angle: **-1°55'53"**

Combination Scale Factor: **0.999913448**

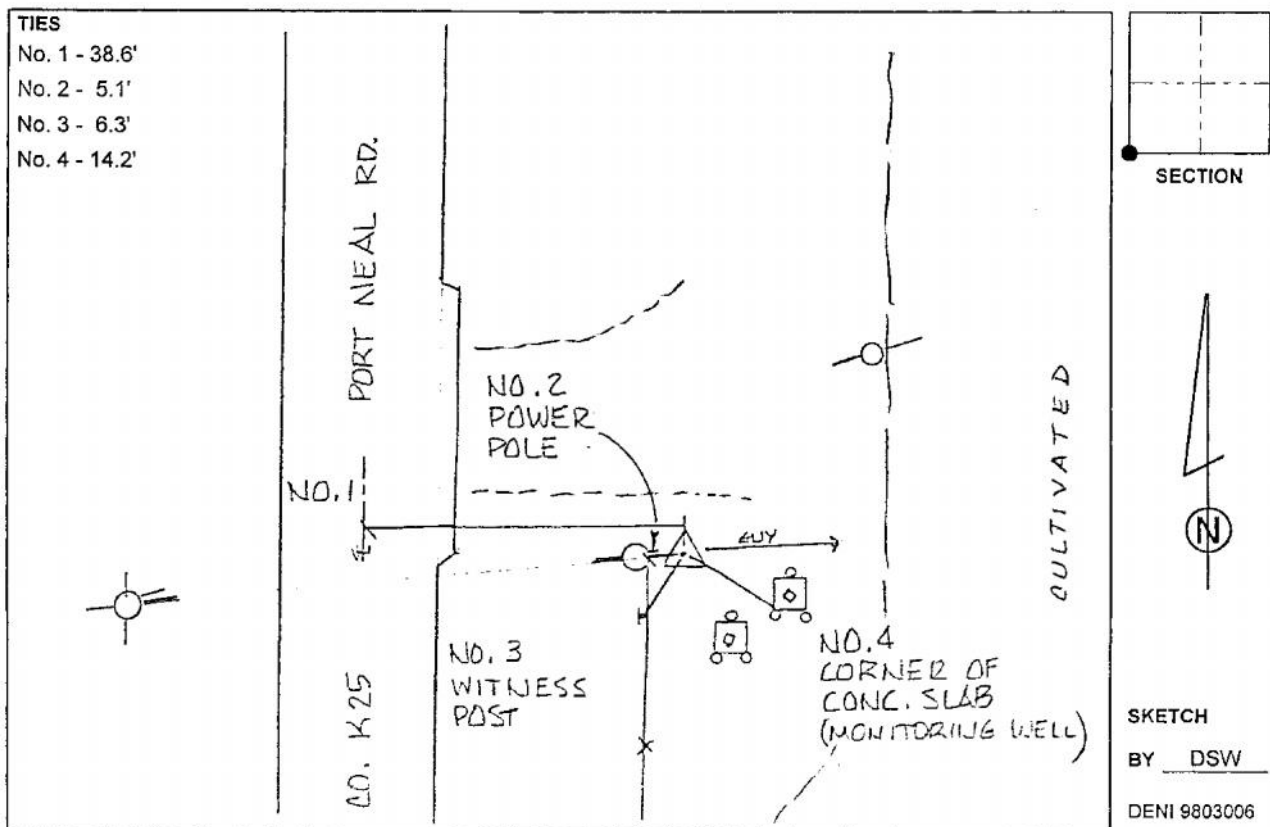
IaRCS Zone 4 Northing: **8534931.294sft**

Easting: **14089999.704sft**

Mapping Angle: **-01° 01' 31"**

Combination Scale Factor: **1.000002497**

Monument Type: 3-1/4" aluminum cap on aluminum rod in 6" PVC pipe with aluminum access cover.



This document was prepared by Dan Corbin, Inc. on March 6, 2015 for Woodbury County, Iowa.