

Woodbury County, Iowa

Horizontal Datum: **NAD 83(2011)** - Vertical Datum: **NAVD 1988**

Iowa State Plane North Zone (1401)

Iowa Regional Coordinate System Zone 4 Sioux City-Iowa Falls LCC

US Survey Feet

2015

Point Name: **8114**

GPS No. (1998): **8114**

Designation: 864732 2 (Set by DENI Associates in 1998)

NAD 83(NA2011) Latitude: **N42°12'53.86609"**

Longitude: **W96°20'19.74543"**

NAVD 88 Ortho Height: **1067.840sft**

Ellip. Ht: **981.887sft**

Geoid09

Iowa North Zone (1401) Northing: **3554292.541sft**

Easting: **4152368.945sft**

Mapping Angle: **-1°55'26"**

Combination Scale Factor: **0.999929540**

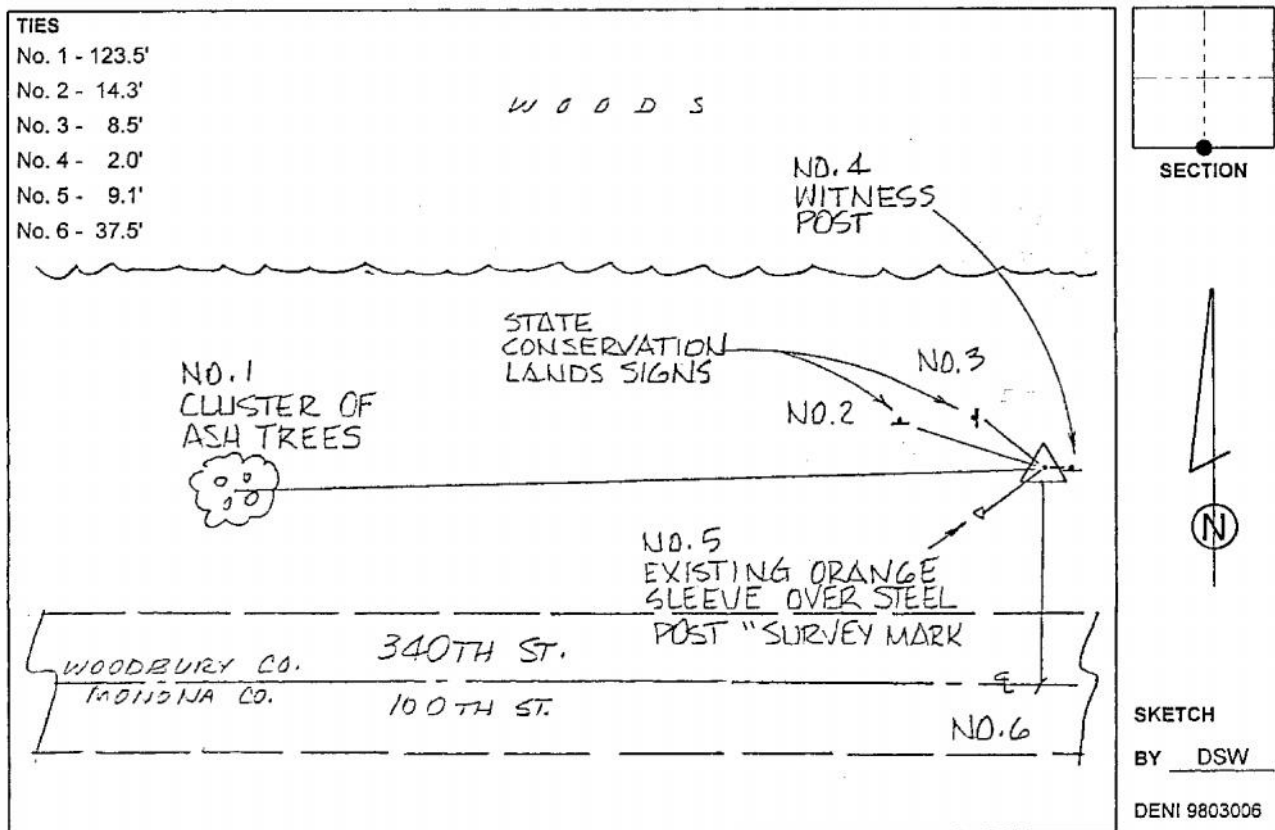
IaRCS Zone 4 Northing: **8487590.577sft**

Easting: **14092156.805sft**

Mapping Angle: **-01° 01' 04"**

Combination Scale Factor: **1.000013331**

Monument Type: 3-1/4" aluminum cap on aluminum rod in 6" PVC pipe with aluminum access cover.



This document was prepared by Dan Corbin, Inc. on March 6, 2015 for Woodbury County, Iowa.