

Woodbury County, Iowa

Horizontal Datum: **NAD 83(2011)** - Vertical Datum: **NAVD 1988**

Iowa State Plane North Zone (1401)

Iowa Regional Coordinate System Zone 4 Sioux City-Iowa Falls LCC

US Survey Feet

2015

Point Name: **8116**

GPS No. (1998): **8116**

Designation: 874802 1 (Set by DENI Associates in 1998)

NAD 83(NA2011) Latitude: **N42°23'08.75906"**

Longitude: **W96°23'39.75682"**

NAVD 88 Ortho Height: **1095.801sft**

Ellip. Ht: **1010.322sft**

Geoid09

Iowa North Zone (1401) Northing: **3617010.520sft**

Easting: **4139457.594sft**

Mapping Angle: **-1°57'42"**

Combination Scale Factor: **0.999909203**

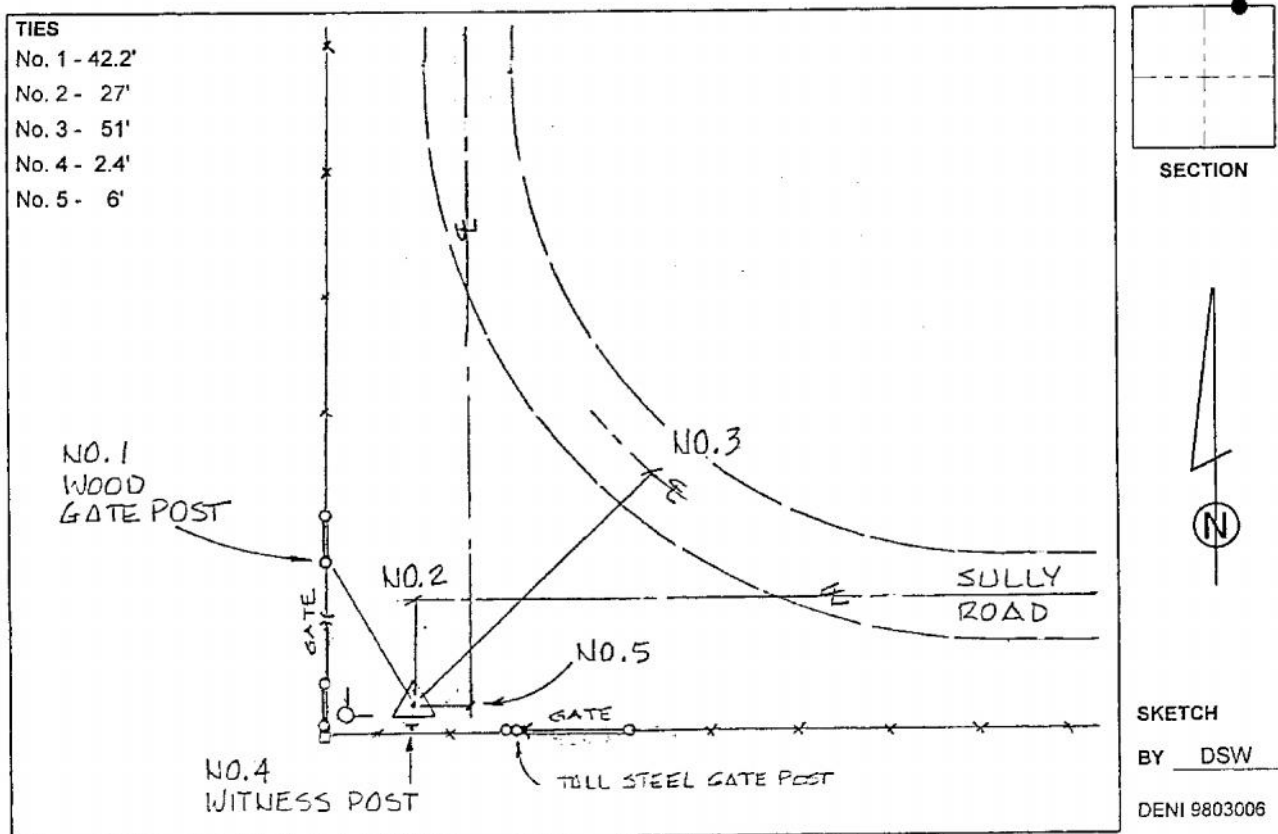
IaRCS Zone 4 Northing: **8550101.951sft**

Easting: **14078253.821sft**

Mapping Angle: **-01° 03' 19"**

Combination Scale Factor: **0.999999917**

Monument Type: 3-1/4" aluminum cap on aluminum rod in 6" PVC pipe with aluminum access cover.



This document was prepared by Dan Corbin, Inc. on March 6, 2015 for Woodbury County, Iowa.