

**Woodbury County, Iowa**

Horizontal Datum: **NAD 83(2011)** - Vertical Datum: **NAVD 1988**

Iowa State Plane North Zone (1401)

Iowa Regional Coordinate System Zone 4 Sioux City-Iowa Falls LCC

US Survey Feet

**2015**

Point Name: **8118**

GPS No. (1998): **8118**

**Designation:** 894813 2 (Set by DENI Associates in 1998)

NAD 83(NA2011) Latitude: **N42°31'19.70318"**

Longitude: **W96°27'07.34030"**

NAVD 88 Ortho Height: **1371.300sft**

Ellip. Ht: **1285.941sft**

**Geoid09**

Iowa North Zone (1401) Northing: **3667216.581sft**

Easting: **4125623.973sft**

Mapping Angle: **-2°00'03"**

Combination Scale Factor: **0.999887226**

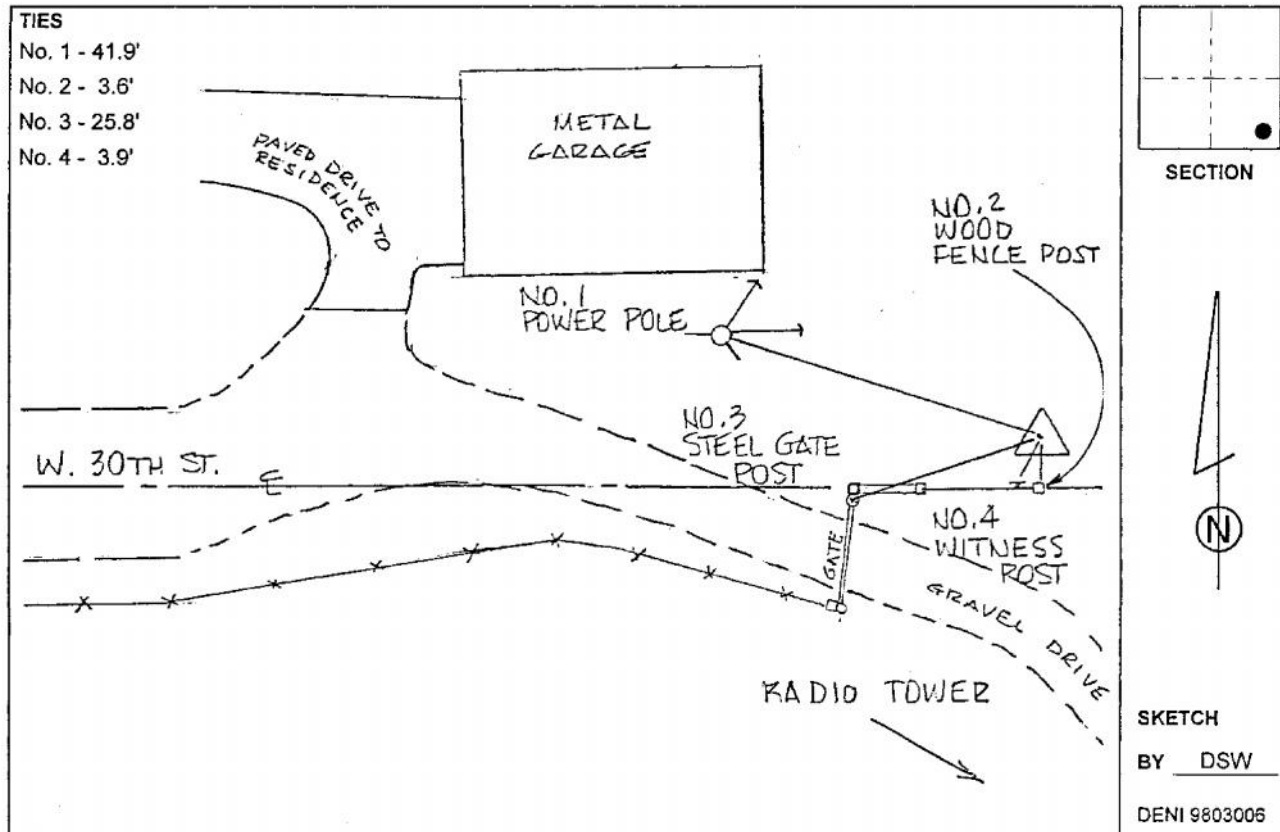
IaRCS Zone 4 Northing: **8600087.577sft**

Easting: **14063626.349sft**

Mapping Angle: **-01° 05' 39"**

Combination Scale Factor: **0.999983436**

**Monument Type:** 3-1/4" aluminum cap on aluminum rod in 6" PVC pipe with aluminum access cover.



*This document was prepared by Dan Corbin, Inc. on March 6, 2015 for Woodbury County, Iowa.*