

Woodbury County, Iowa

Horizontal Datum: **NAD 83(2011)** - Vertical Datum: **NAVD 1988**

Iowa State Plane North Zone (1401)

Iowa Regional Coordinate System Zone 4 Sioux City-Iowa Falls LCC

US Survey Feet

2015

Point Name: **8121**

GPS No. (1998): **8121**

Designation: 894822 1 (Set by DENI Associates in 1998)

NAD 83(NA2011) Latitude: **N42°31'01.87758"**

Longitude: **W96°29'32.14650"**

NAVD 88 Ortho Height: **1105.240sft**

Ellip. Ht: **1020.081sft**

Geoid09

Iowa North Zone (1401) Northing: **3665794.370sft**

Easting: **4114723.559sft**

Mapping Angle: **-2°01'41"**

Combination Scale Factor: **0.999900132**

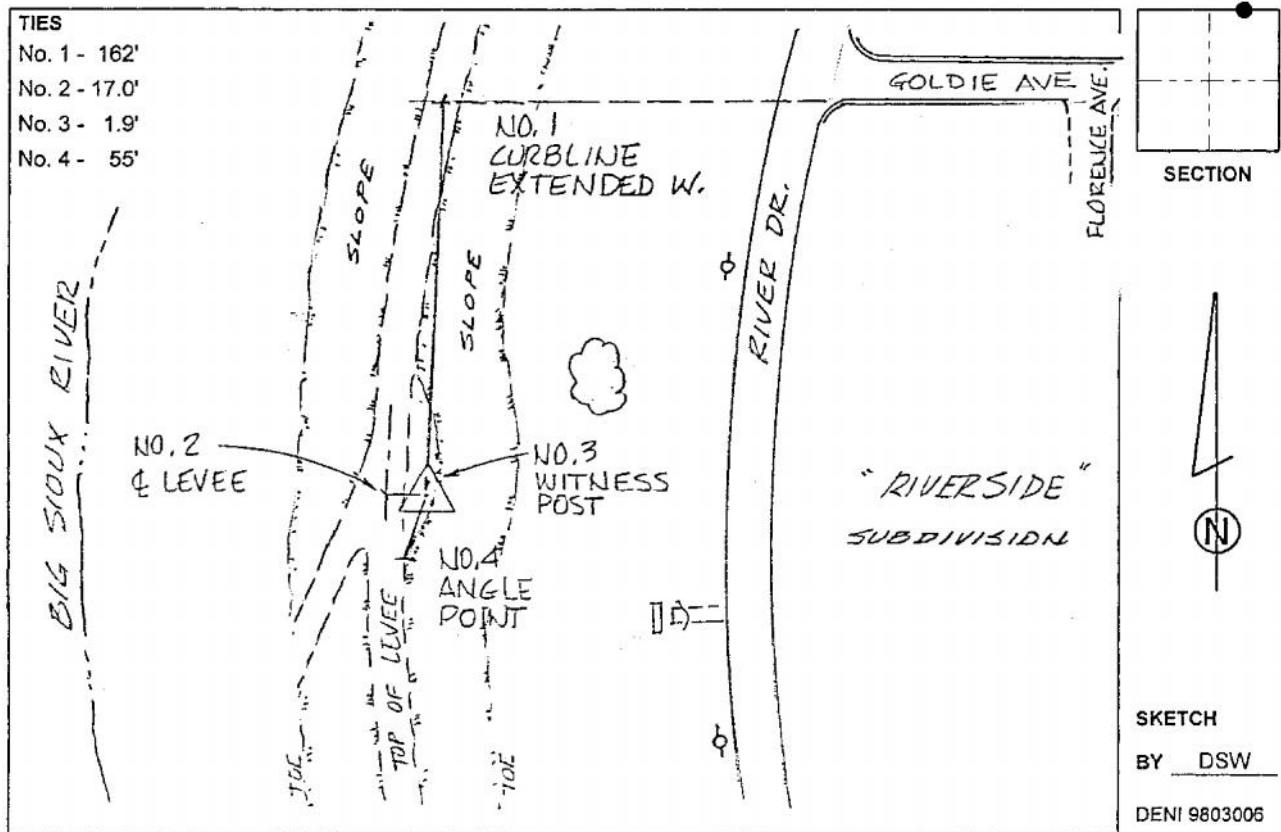
IaRCS Zone 4 Northing: **8598492.939sft**

Easting: **14052748.751sft**

Mapping Angle: **-01° 07' 17"**

Combination Scale Factor: **0.999996188**

Monument Type: 3-1/4" aluminum cap on aluminum rod in 6" PVC pipe with aluminum access cover.



This document was prepared by Dan Corbin, Inc. on March 6, 2015 for Woodbury County, Iowa.