

Woodbury County, Iowa

Horizontal Datum: **NAD 83(2011)** - Vertical Datum: **NAVD 1988**

Iowa State Plane North Zone (1401)

Iowa Regional Coordinate System Zone 4 Sioux City-Iowa Falls LCC

US Survey Feet

2015

Point Name: **8123**

GPS No. (1998): **8123**

Designation: 884824 4 (Set by DENI Associates in 1998)

NAD 83(NA2011) Latitude: **N42°25'37.75581"**

Longitude: **W96°23'17.05866"**

NAVD 88 Ortho Height: **1091.047sft**

Ellip. Ht: **1005.456sft**

Geoid09

Iowa North Zone (1401) Northing: **3632026.197sft**

Easting: **4141675.135sft**

Mapping Angle: **-1°57'27"**

Combination Scale Factor: **0.999906162**

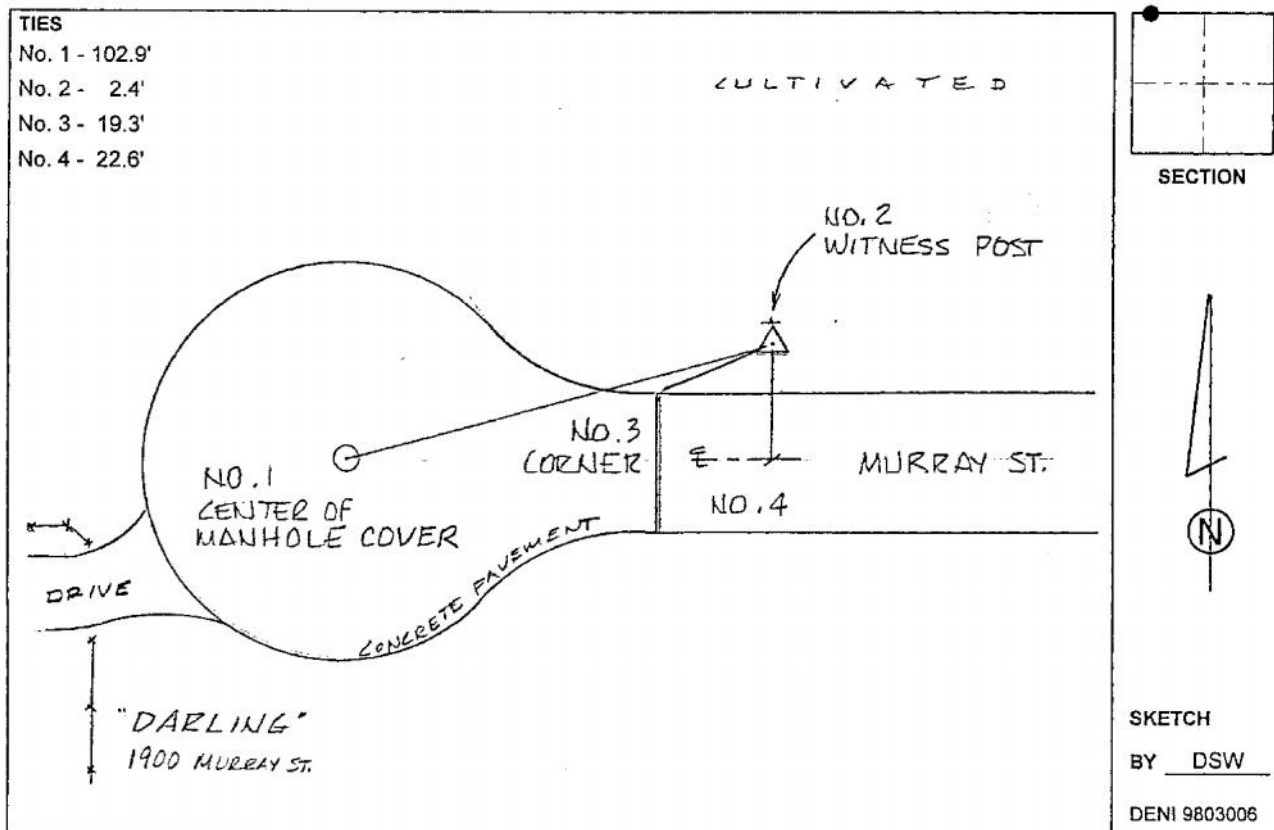
IaRCS Zone 4 Northing: **8565152.207sft**

Easting: **14080233.747sft**

Mapping Angle: **-01° 03' 04"**

Combination Scale Factor: **0.999998558**

Monument Type: 3-1/4" aluminum cap on aluminum rod in 6" PVC pipe with aluminum access cover.



This document was prepared by Dan Corbin, Inc. on March 6, 2015 for Woodbury County, Iowa.