

Woodbury County, Iowa

Horizontal Datum: **NAD 83(2011)** - Vertical Datum: **NAVD 1988**

Iowa State Plane North Zone (1401)

Iowa Regional Coordinate System Zone 4 Sioux City-Iowa Falls LCC

US Survey Feet

2015

Point Name: **8124 (Replaces 8007)**

GPS No. (1998): **N/A**

Designation: 8124 GPS Control Pt. (Set by DCI in 2012)

NAD 83(NA2011) Latitude: **N42°12'40.40592"**

Longitude: **W95°40'14.55197"**

NAVD 88 Ortho Height: **1343.814sft**

Ellip. Ht: **1252.097sft**

Geoid09

Iowa North Zone (1401) Northing: **3547568.833sft**

Easting: **4333242.449sft**

Mapping Angle: **-1°28'16"**

Combination Scale Factor: **0.999917163**

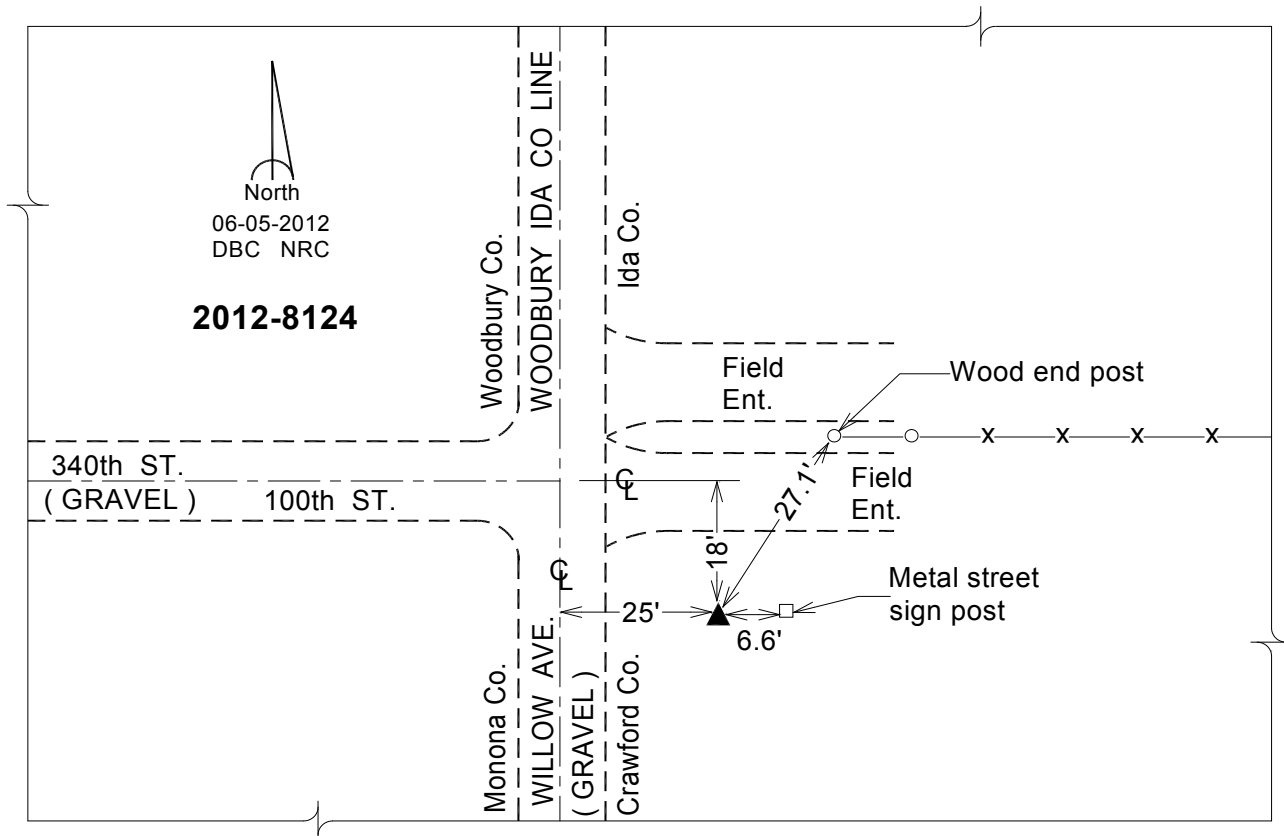
IaRCS Zone 4 Northing: **8483726.353sft**

Easting: **14273129.174sft**

Mapping Angle: **-00° 33' 58"**

Combination Scale Factor: **1.000000753**

Monument Type: Berntsen Top Security Rod Monument with a 2-1/2" dia. domed survey cap and permanent magnet encased in a 5" dia. PVC pipe with a NGS style aluminum access cover.



This document was prepared by Dan Corbin, Inc. on March 6, 2015 for Woodbury County, Iowa.