

**Woodbury County, Iowa**

Horizontal Datum: **NAD 83(2011)** - Vertical Datum: **NAVD 1988**

Iowa State Plane North Zone (1401)

Iowa Regional Coordinate System Zone 4 Sioux City-Iowa Falls LCC

US Survey Feet

**2015**

Point Name: **8126 (Replaces 8049)**

GPS No. (1998): **N/A**

**Designation:** 8126 GPS Control Pt. (Set by DCI in 2012)

NAD 83(NA2011) Latitude: **N42°25'45.47983"**

Longitude: **W95°57'47.72540"**

NAVD 88 Ortho Height: **1426.565sft**

Ellip. Ht: **1338.085sft**

**Geoid09**

Iowa North Zone (1401) Northing: **3629178.348sft**

Easting: **4256332.570sft**

Mapping Angle: **-1°40'10"**

Combination Scale Factor: **0.999890137**

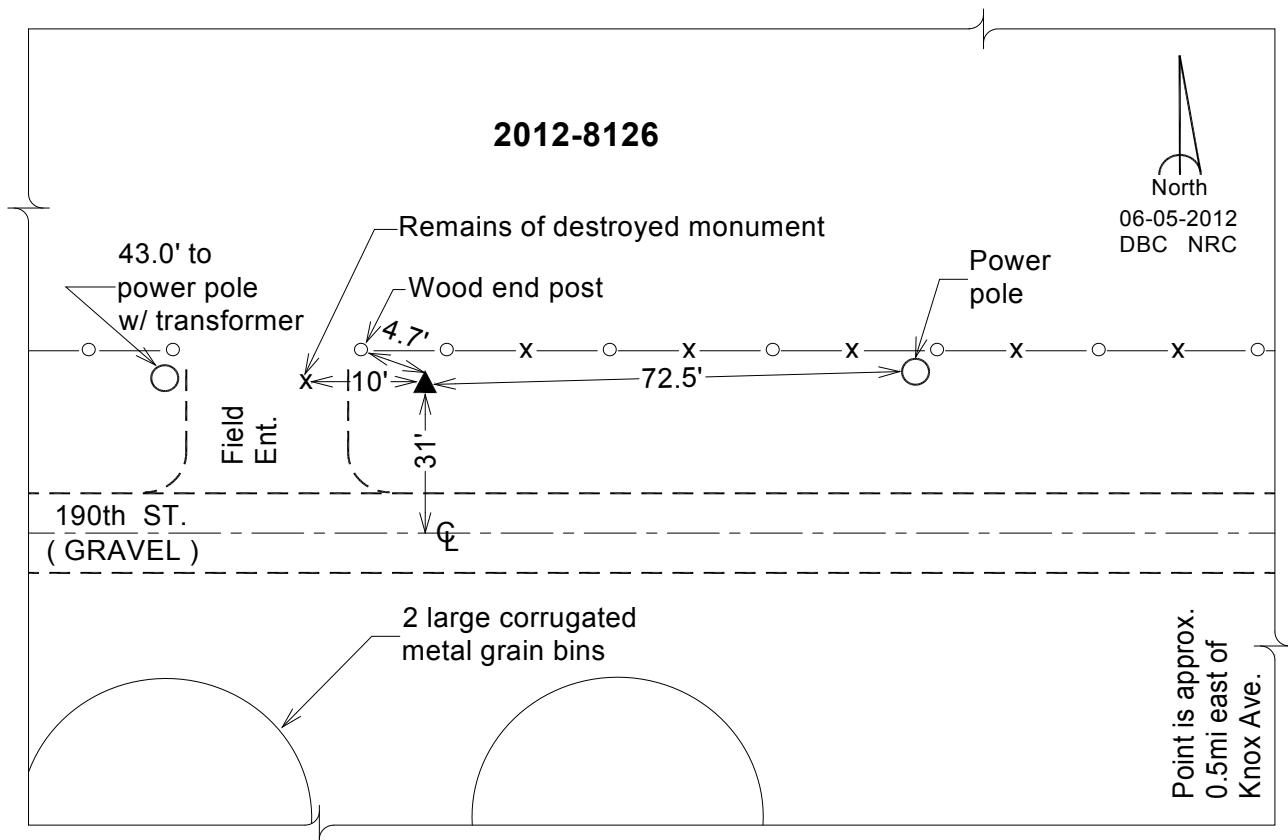
laRCS Zone 4 Northing: **8564117.536sft**

Easting: **14194932.501sft**

Mapping Angle: **-00° 45' 50"**

Combination Scale Factor: **0.999982561**

**Monument Type:** Berntsen Top Security Rod Monument with a 2-1/2" dia. domed survey cap and permanent magnet encased in a 5" dia. PVC pipe with a NGS style aluminum access cover.



*This document was prepared by Dan Corbin, Inc. on March 6, 2015 for Woodbury County, Iowa.*