

Woodbury County, Iowa

Horizontal Datum: **NAD 83(2011)** - Vertical Datum: **NAVD 1988**

Iowa State Plane North Zone (1401)

Iowa Regional Coordinate System Zone 4 Sioux City-Iowa Falls LCC

US Survey Feet

2015

Point Name: **8127 (Replaces 8063)**

GPS No. (1998): **N/A**

Designation: 8127 GPS Control Pt. (Set by DCI in 2012)

NAD 83(NA2011) Latitude: **N42°16'15.46634"**

Longitude: **W96°05'04.48142"**

NAVD 88 Ortho Height: **1075.139sft**

Ellip. Ht: **987.154sft**

Geoid09

Iowa North Zone (1401) Northing: **3572481.661sft**

Easting: **4221830.001sft**

Mapping Angle: **-1°45'06"**

Combination Scale Factor: **0.999922096**

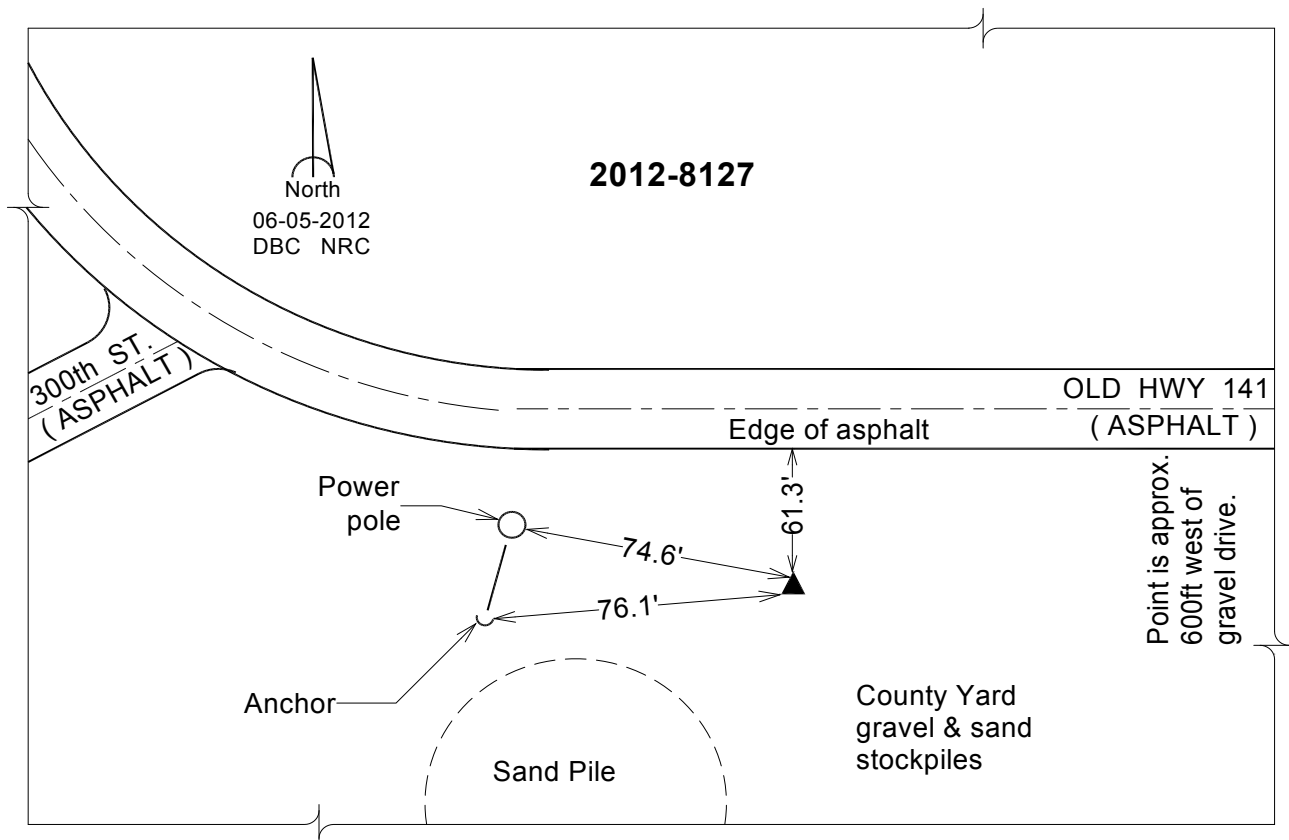
IaRCS Zone 4 Northing: **8506877.429sft**

Easting: **14161327.444sft**

Mapping Angle: **-00° 50' 45"**

Combination Scale Factor: **1.000008155**

Monument Type: Berntsen Top Security Rod Monument with a 2-1/2" dia. domed survey cap and permanent magnet encased in a 5" dia. PVC pipe with a NGS style aluminum access cover.



This document was prepared by Dan Corbin, Inc. on March 6, 2015 for Woodbury County, Iowa.