

Woodbury County, Iowa

Horizontal Datum: **NAD 83(2011)** - Vertical Datum: **NAVD 1988**

Iowa State Plane North Zone (1401)

Iowa Regional Coordinate System Zone 4 Sioux City-Iowa Falls LCC

US Survey Feet

2015

Point Name: **8128 (Replaces 8081)**

GPS No. (1998): **N/A**

Designation: 8128 GPS Control Pt. (Set by DCI in 2012)

NAD 83(NA2011) Latitude: **N42°15'26.05377"**

Longitude: **W96°11'38.04139"**

NAVD 88 Ortho Height: **1069.388sft**

Ellip. Ht: **982.164sft**

Geoid09

Iowa North Zone (1401) Northing: **3568405.874sft**

Easting: **4192096.456sft**

Mapping Angle: **-1°49'33"**

Combination Scale Factor: **0.999924010**

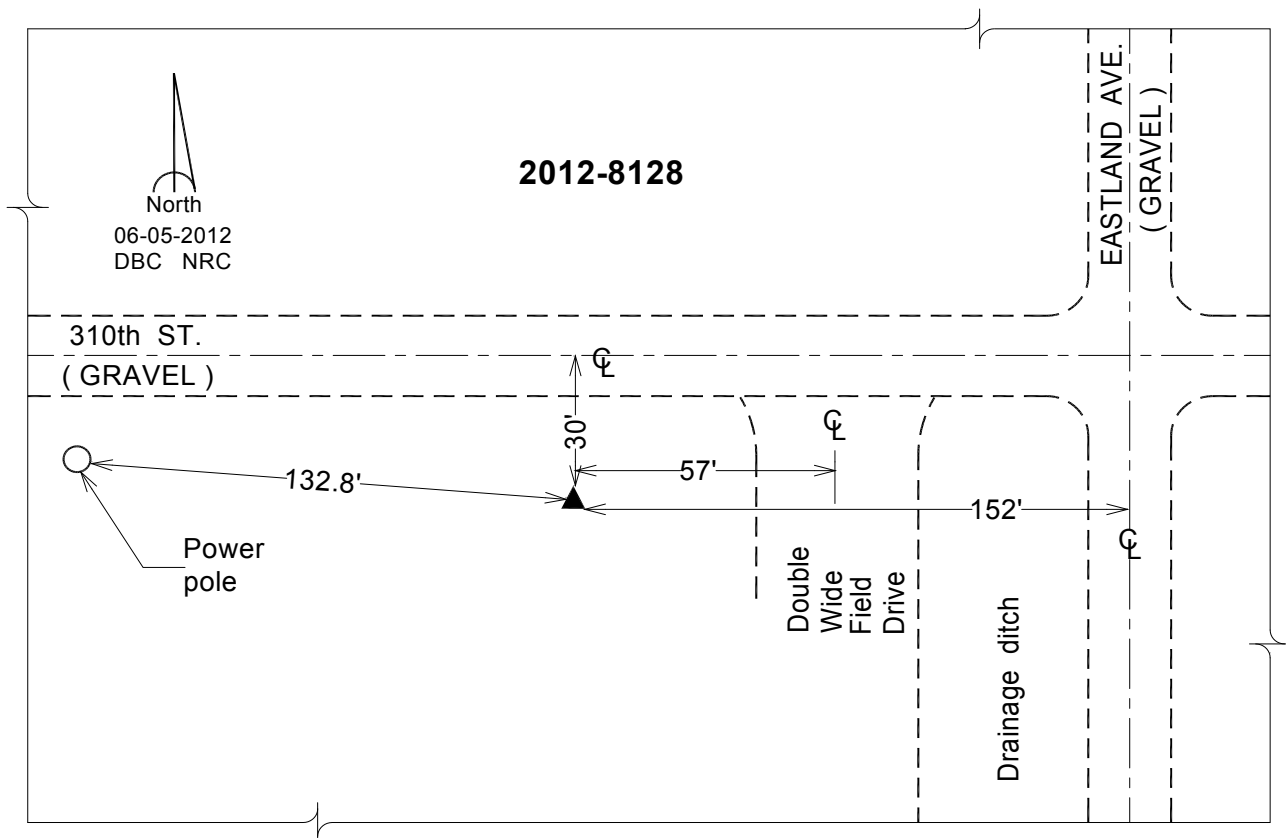
IaRCS Zone 4 Northing: **8502331.660sft**

Easting: **14131659.505sft**

Mapping Angle: **-00° 55' 11"**

Combination Scale Factor: **1.000009513**

Monument Type: Berntsen Top Security Rod Monument with a 2-1/2" dia. domed survey cap and permanent magnet encased in a 5" dia. PVC pipe with a NGS style aluminum access cover.



This document was prepared by Dan Corbin, Inc. on March 6, 2015 for Woodbury County, Iowa.