

Woodbury County, Iowa

Horizontal Datum: **NAD 83(2011)** - Vertical Datum: **NAVD 1988**

Iowa State Plane North Zone (1401)

Iowa Regional Coordinate System Zone 4 Sioux City-Iowa Falls LCC

US Survey Feet

2015

Point Name: **8129 (Replaces 8111)**

GPS No. (1998): **N/A**

Designation: 8129 GPS Control Pt. (Set by DCI in 2012)

NAD 83(NA2011) Latitude: **N42°23'08.71127"**

Longitude: **W96°22'11.63989"**

NAVD 88 Ortho Height: **1094.419sft**

Ellip. Ht: **1008.763sft**

Geoid09

Iowa North Zone (1401) Northing: **3616780.285sft**

Easting: **4146066.276sft**

Mapping Angle: **-1°56'42"**

Combination Scale Factor: **0.999909279**

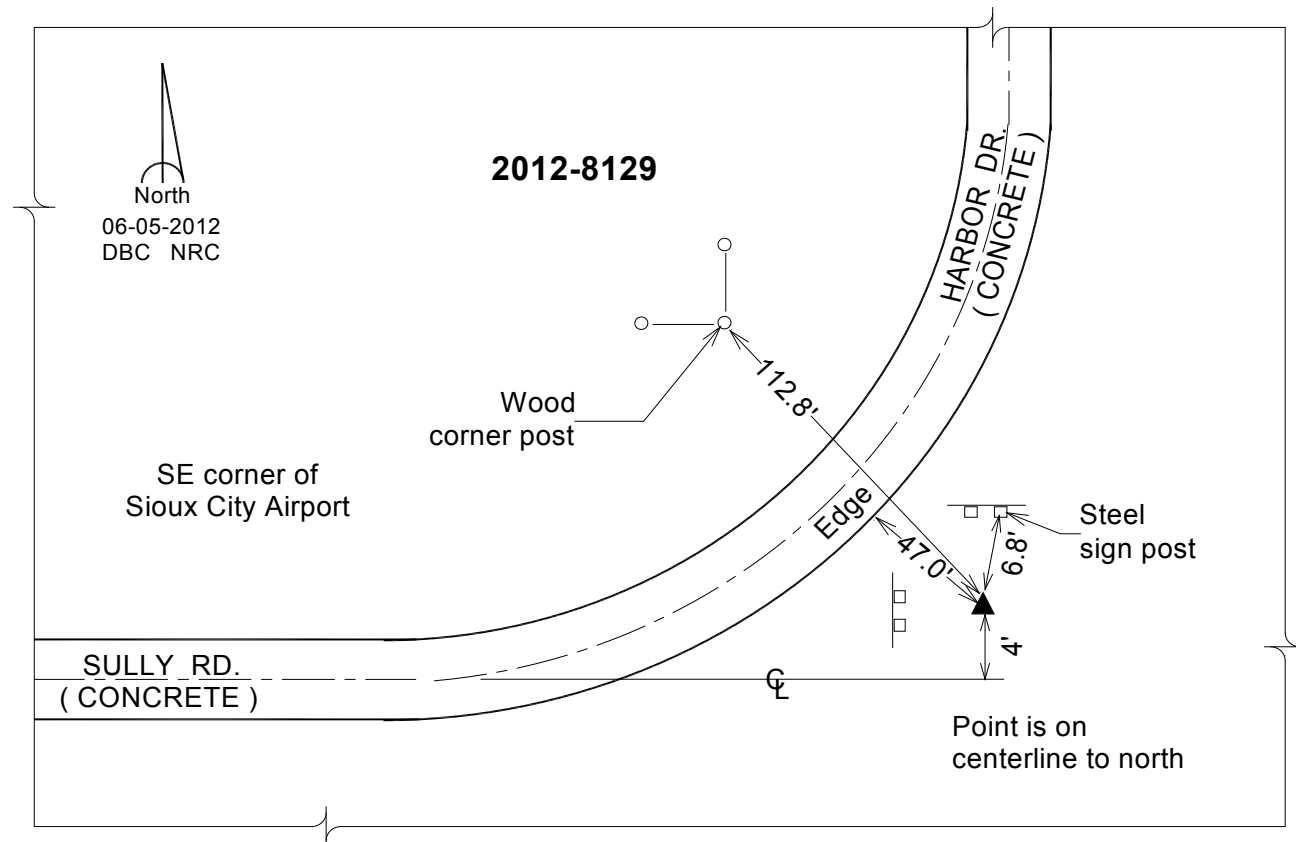
IaRCS Zone 4 Northing: **8549976.269sft**

Easting: **14084865.919sft**

Mapping Angle: **-01° 02' 19"**

Combination Scale Factor: **0.999999992**

Monument Type: Berntsen Top Security Rod Monument with a 2-1/2" dia. domed survey cap and permanent magnet encased in a 5" dia. PVC pipe with a NGS style aluminum access cover.



This document was prepared by Dan Corbin, Inc. on March 6, 2015 for Woodbury County, Iowa.