

Woodbury County, Iowa

Horizontal Datum: **NAD 83(2011)** - Vertical Datum: **NAVD 1988**

Iowa State Plane North Zone (1401)

Iowa Regional Coordinate System Zone 4 Sioux City-Iowa Falls LCC

US Survey Feet

2015

Point Name: **9805**

GPS No. (1998): **9805**

Designation: USC & GS Benchmark "K14"

NAD 83(NA2011) Latitude: **N42°31'07.94065"**

Longitude: **W95°50'16.79497"**

NAVD 88 Ortho Height: **1195.570**sft

Ellip. Ht: **1106.217**sft

Geoid09

Iowa North Zone (1401) Northing: **3660848.193**sft

Easting: **4291037.905**sft

Mapping Angle: **-1°35'04"**

Combination Scale Factor: **0.999895946**

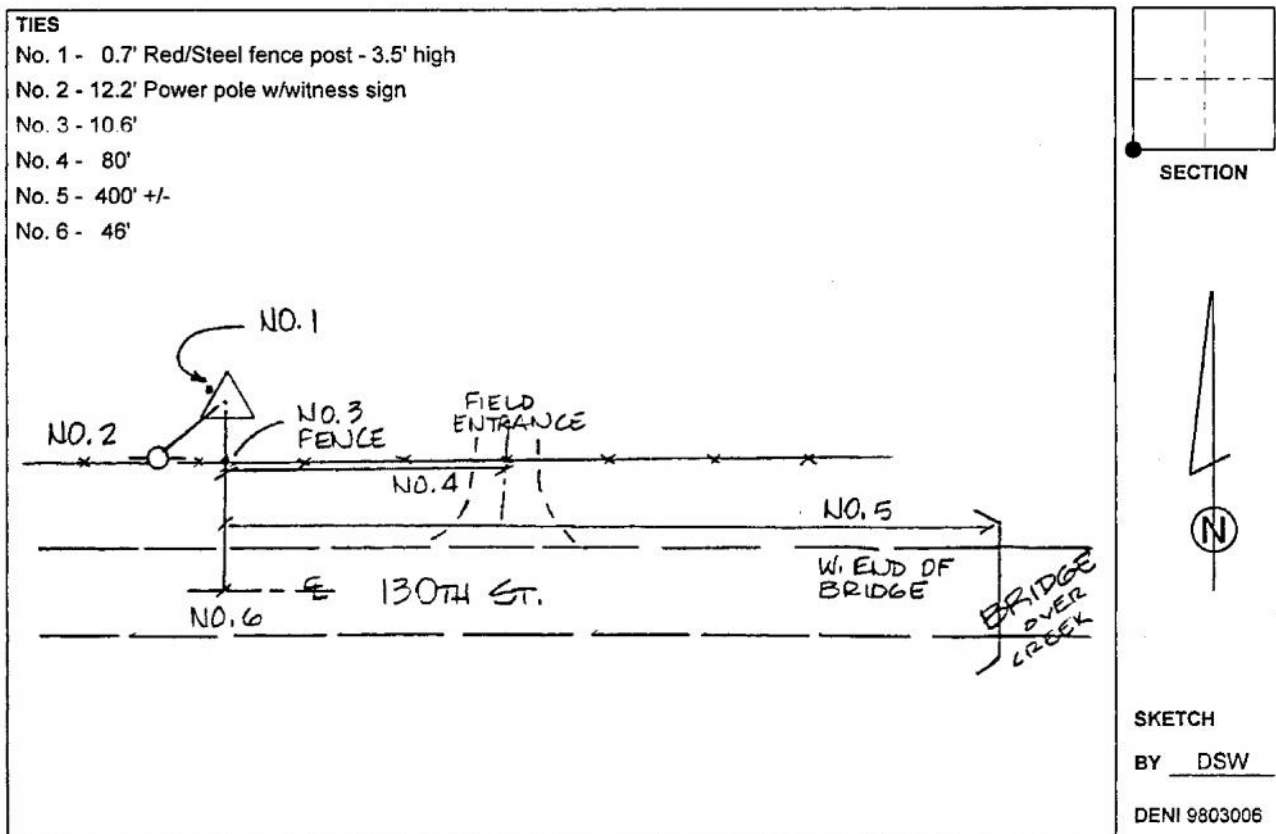
IaRCS Zone 4 Northing: **8596334.930**sft

Easting: **14229136.245**sft

Mapping Angle: **-00° 40' 45"**

Combination Scale Factor: **0.999992056**

Monument Type: USC & GS benchmark disk in 12" diameter concrete monument, stamped "K14 1933", flush.



This document was prepared by Dan Corbin, Inc. on March 6, 2015 for Woodbury County, Iowa.