

Woodbury County, Iowa

Horizontal Datum: **NAD 83(2011)** - Vertical Datum: **NAVD 1988**

Iowa State Plane North Zone (1401)

Iowa Regional Coordinate System Zone 4 Sioux City-Iowa Falls LCC

US Survey Feet

2015

Point Name: **9807**

GPS No. (1998): **9807**

Designation: USGS Benchmark "24 T"

NAD 83(NA2011) Latitude: **N42°25'48.01255"**

Longitude: **W95°46'03.47002"**

NAVD 88 Ortho Height: **1283.100sft**

Ellip. Ht: **1193.029sft**

Geoid09

Iowa North Zone (1401) Northing: **3627957.075sft**

Easting: **4309132.524sft**

Mapping Angle: **-1°32'13"**

Combination Scale Factor: **0.999897007**

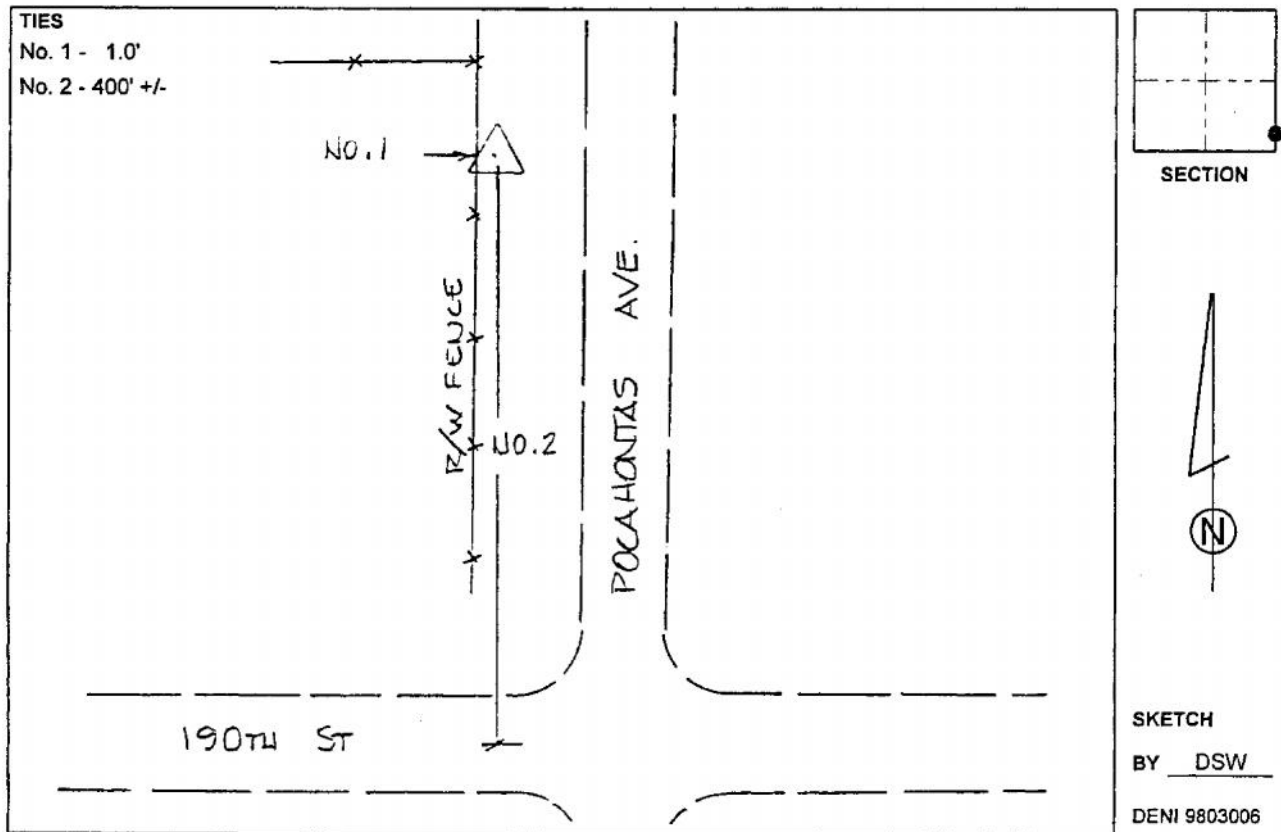
IaRCS Zone 4 Northing: **8563730.739sft**

Easting: **14247750.056sft**

Mapping Angle: **-00° 37' 54"**

Combination Scale Factor: **0.999989485**

Monument Type: USGS benchmark disk on metal rod in 6" concrete tile, stamped "24 T 1968 1283 FT".



This document was prepared by Dan Corbin, Inc. on March 6, 2015 for Woodbury County, Iowa.