

Woodbury County, Iowa

Horizontal Datum: **NAD 83(2011)** - Vertical Datum: **NAVD 1988**

Iowa State Plane North Zone (1401)

Iowa Regional Coordinate System Zone 4 Sioux City-Iowa Falls LCC

US Survey Feet

2015

Point Name: **9810**

GPS No. (1998): **9810**

Designation: USC & GS Benchmark "H 128"

NAD 83(NA2011) Latitude: **N42°25'54.65192"**

Longitude: **W96°22'09.80072"**

NAVD 88 Ortho Height: **1097.980sft**

Ellip. Ht: **1012.240sft**

Geoid09

Iowa North Zone (1401) Northing: **3633563.859sft**

Easting: **4146774.255sft**

Mapping Angle: **-1°56'41"**

Combination Scale Factor: **0.999905499**

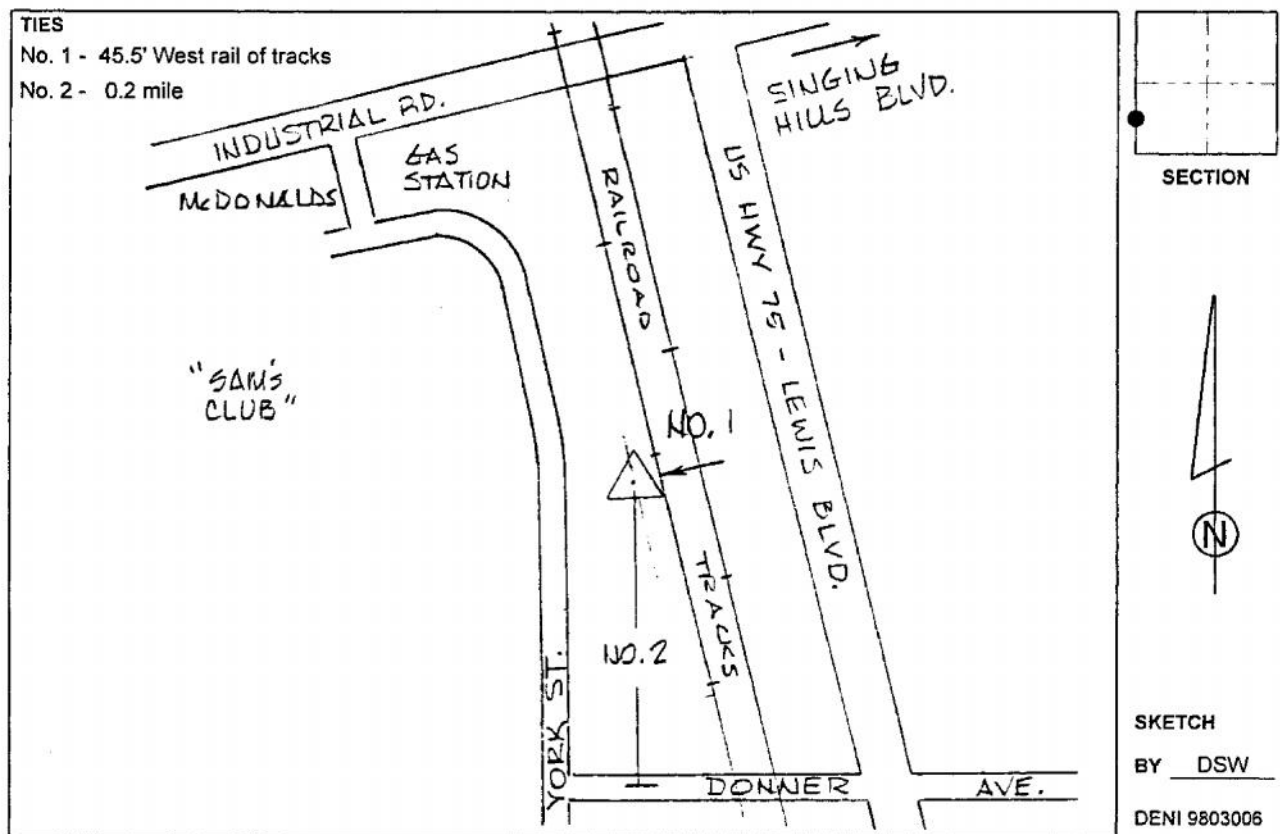
IaRCS Zone 4 Northing: **8566770.483sft**

Easting: **14085308.378sft**

Mapping Angle: **-01° 02' 18"**

Combination Scale Factor: **0.999998085**

Monument Type: USC & GS benchmark disk in concrete post 4" above ground "H 128".



This document was prepared by Dan Corbin, Inc. on March 6, 2015 for Woodbury County, Iowa.