

Woodbury County, Iowa

Horizontal Datum: **NAD 83(2011)** - Vertical Datum: **NAVD 1988**

Iowa State Plane North Zone (1401)

Iowa Regional Coordinate System Zone 4 Sioux City-Iowa Falls LCC

US Survey Feet

2015

Point Name: **9815**

GPS No. (1998): **9815**

Designation: USC & GS Reference mark "397 RM 3"

NAD 83(NA2011) Latitude: **N42°21'19.22141"**

Longitude: **W96°24'29.28442"**

NAVD 88 Ortho Height: **1091.656sft**

Ellip. Ht: **1006.307sft**

Geoid09

Iowa North Zone (1401) Northing: **3606056.309sft**

Easting: **4135361.648sft**

Mapping Angle: **-1°58'16"**

Combination Scale Factor: **0.999912131**

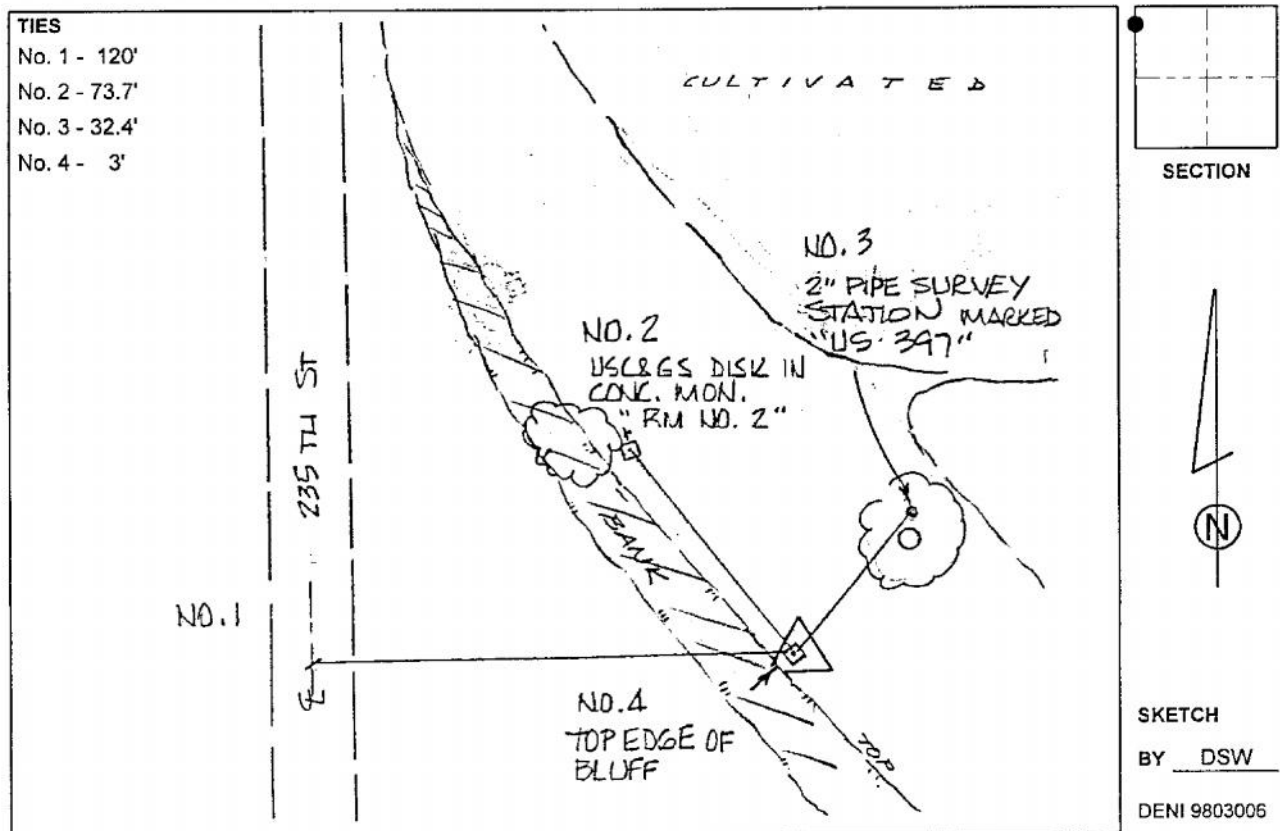
IaRCS Zone 4 Northing: **8539083.325sft**

Easting: **14074331.311sft**

Mapping Angle: **-01° 03' 53"**

Combination Scale Factor: **1.000001610**

Monument Type: USC & GS reference mark disk set in 10" x 10" conc. post "397 RM 3".



This document was prepared by Dan Corbin, Inc. on March 6, 2015 for Woodbury County, Iowa.