

Woodbury County, Iowa

Horizontal Datum: **NAD 83(2011)** - Vertical Datum: **NAVD 1988**

Iowa State Plane North Zone (1401)

Iowa Regional Coordinate System Zone 4 Sioux City-Iowa Falls LCC

US Survey Feet

2015

Point Name: **9825**

GPS No. (1998): **9825**

Designation: USGS Benchmark "31 RS"

NAD 83(NA2011) Latitude: **N42°23'42.86542"**

Longitude: **W96°06'59.22312"**

NAVD 88 Ortho Height: **1366.970sft**

Ellip. Ht: **1279.559sft**

Geoid09

Iowa North Zone (1401) Northing: **3618014.568sft**

Easting: **4214609.044sft**

Mapping Angle: **-1°46'24"**

Combination Scale Factor: **0.999895563**

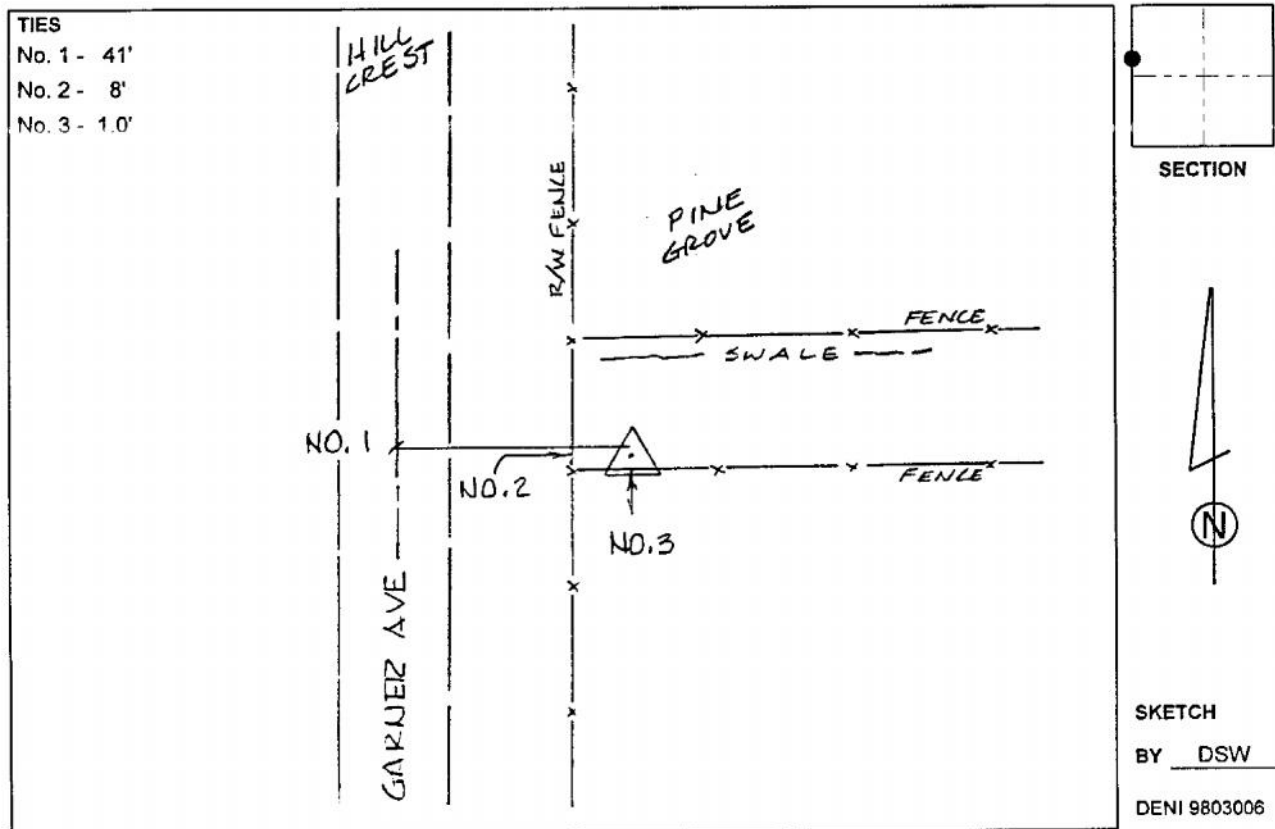
IaRCS Zone 4 Northing: **8552294.519sft**

Easting: **14153386.838sft**

Mapping Angle: **-00° 52' 03"**

Combination Scale Factor: **0.999986613**

Monument Type: USGS benchmark disk in concrete post, stamped "31 RS 1962".



This document was prepared by Dan Corbin, Inc. on March 6, 2015 for Woodbury County, Iowa.