

Woodbury County, Iowa

Horizontal Datum: **NAD 83(2011)** - Vertical Datum: **NAVD 1988**

Iowa State Plane North Zone (1401)

Iowa Regional Coordinate System Zone 4 Sioux City-Iowa Falls LCC

US Survey Feet

2015

Point Name: **9896**

GPS No. (1998): **9896**

Designation: USC & GS Benchmark "J 129"

NAD 83(NA2011) Latitude: **N42°15'26.86558"**

Longitude: **W96°14'52.49066"**

NAVD 88 Ortho Height: **1074.270sft**

Ellip. Ht: **987.541sft**

Geoid09

Iowa North Zone (1401) Northing: **3568958.549sft**

Easting: **4177484.431sft**

Mapping Angle: **-1°51'45"**

Combination Scale Factor: **0.999923725**

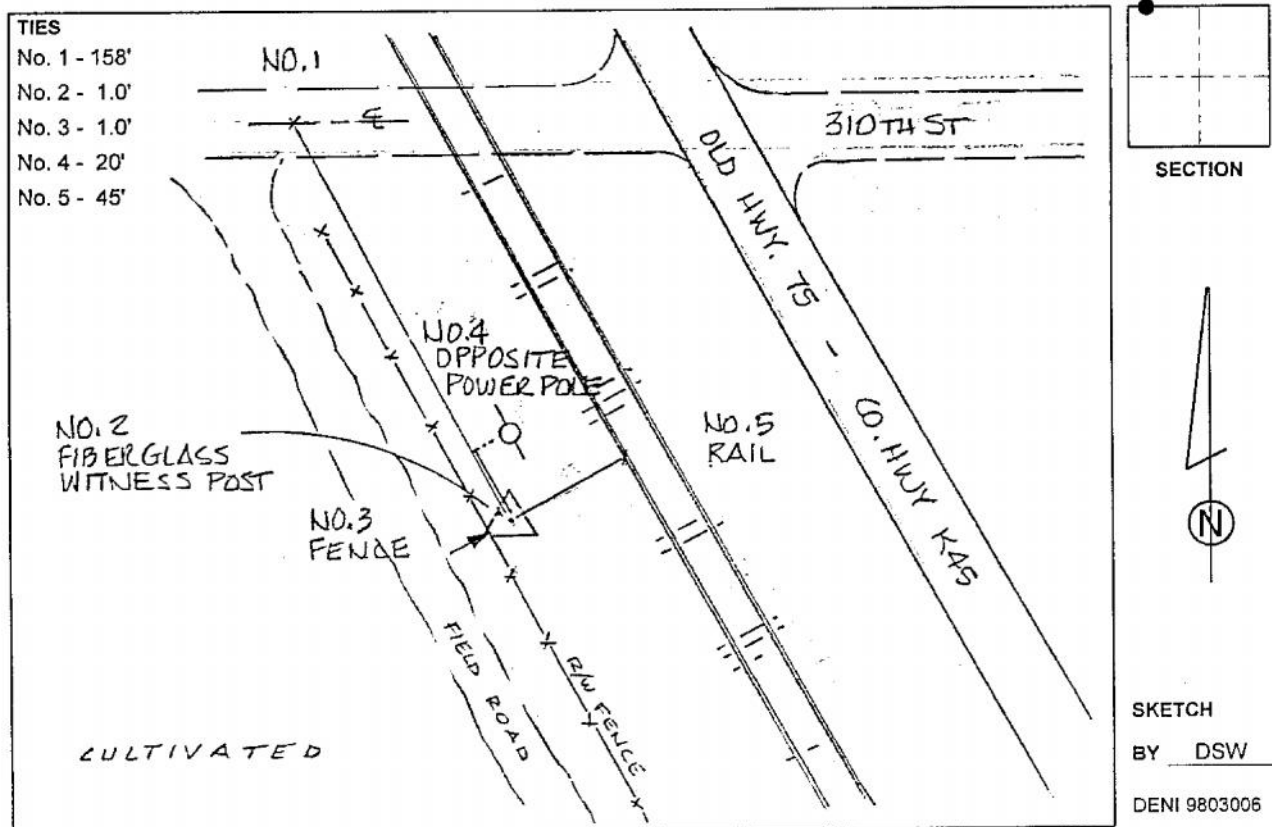
IaRCS Zone 4 Northing: **8502653.233sft**

Easting: **14117039.315sft**

Mapping Angle: **-00° 57' 23"**

Combination Scale Factor: **1.000009237**

Monument Type: USC & GS disk in concrete post, 0.2' above ground.



This document was prepared by Dan Corbin, Inc. on March 6, 2015 for Woodbury County, Iowa.