

Worth County, Iowa
Iowa North Zone (1401)
Horiz. Datum: NAD83(1996)
Vert. Datum: NAVD 1988
US Survey Feet
2006

Point Name: **100**

Designation: G150 Winnebago Co GPS Control Monument (Set by WHKS in 2002)

Northing: **4009524.00sft** Easting: **4921303.55sft**

Orthometric Height: **1273.02sft** Ellipsoid Height: **1176.60sft** **Geoid03**

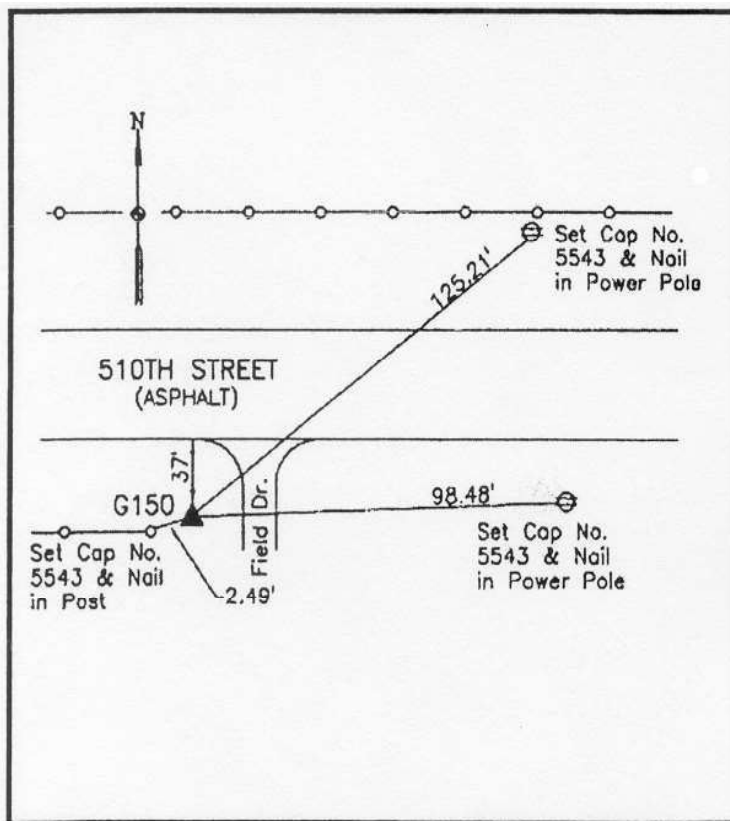
Latitude: **43°29'58.03382"N**

Longitude: **93°29'59.27351"W**

Mapping Angle: **0°00'00"**

Combination Scale Factor: **0.99999471**

Monument Type: 5/8" x 6'-0" long aluminum rod with stamped cap and NGS style access cover.



Description:

Placed 5/8" X 6' - 0" Long
Aluminum Rod with Cap
Stamped G150 and NGS Style
Access Cover 2 " Deep.

Location:

On south side 510th Street
(County Road A14) - 0.2± mile
west of Apple Avenue - 2'±
east of end wood post - near
NE Corner Section 12-T100N-
R23W.

This document was prepared by DCI and GBC for use by Worth County, Iowa.