

**Worth County, Iowa**  
Iowa North Zone (1401)  
Horiz. Datum: NAD83(1996)  
Vert. Datum: NAVD 1988  
US Survey Feet  
**2006**

Point Name: **102**

**Designation:** G132 Winnebago Co GPS Control Monument (Set by WHKS in 2002)

Northing: **3984250.40**sft Easting: **4921826.84**sft

Orthometric Height: **1294.70**sft Ellipsoid Height: **1198.18**sft **Geoid03**

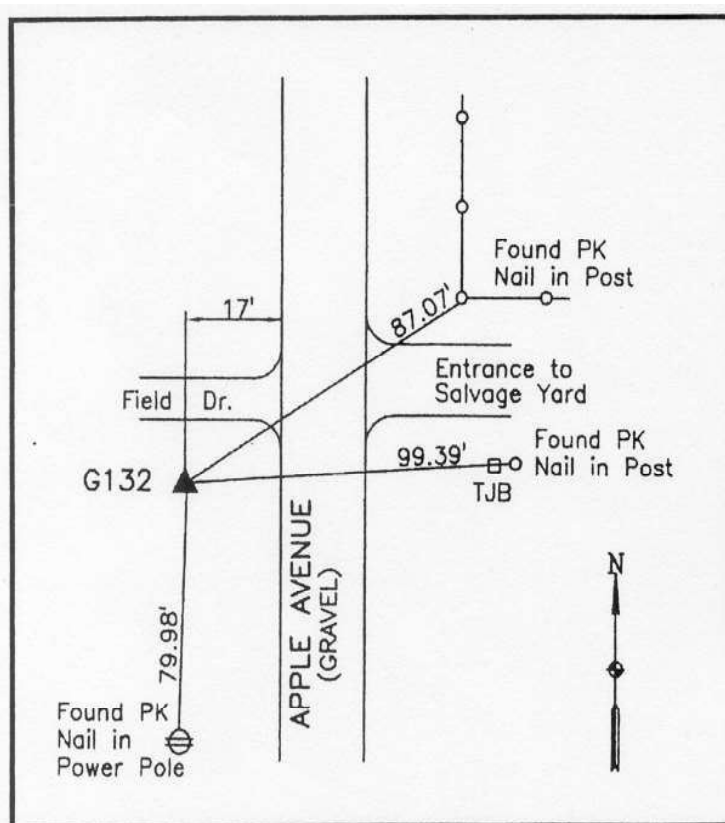
Latitude: **43°25'48.43293"N**

Longitude: **93°29'52.18309"W**

Mapping Angle: **0°00'05"**

Combination Scale Factor: **0.99997680**

**Monument Type:** 5/8" x 6'-0" long aluminum rod with stamped cap and NGS style access cover.



**Description:**

Placed 5/8" X 6' - 0" Long  
Aluminum Rod with Cap  
Stamped G132 and NGS Style  
Access Cover 2 " Deep.

**Location:**

On west side Apple Avenue -  
30'± south of field entrance -  
SW Corner intersection with  
entrance to salvage yard - near  
NE Corner Section 1-T99N-  
R23W.

*This document was prepared by DCI and GBC for use by Worth County, Iowa.*