

Worth County, Iowa
Iowa North Zone (1401)
Horiz. Datum: NAD83(1996)
Vert. Datum: NAVD 1988
US Survey Feet
2006

Point Name: **107**

Designation: G165 Cerro Gordo Co GPS Control Monument (Set by WHKS in 2002)

Northing: **3919883.14**sft Easting: **4937794.98**sft

Orthometric Height: **1234.57**sft Ellipsoid Height: **1139.49**sft **Geoid03**

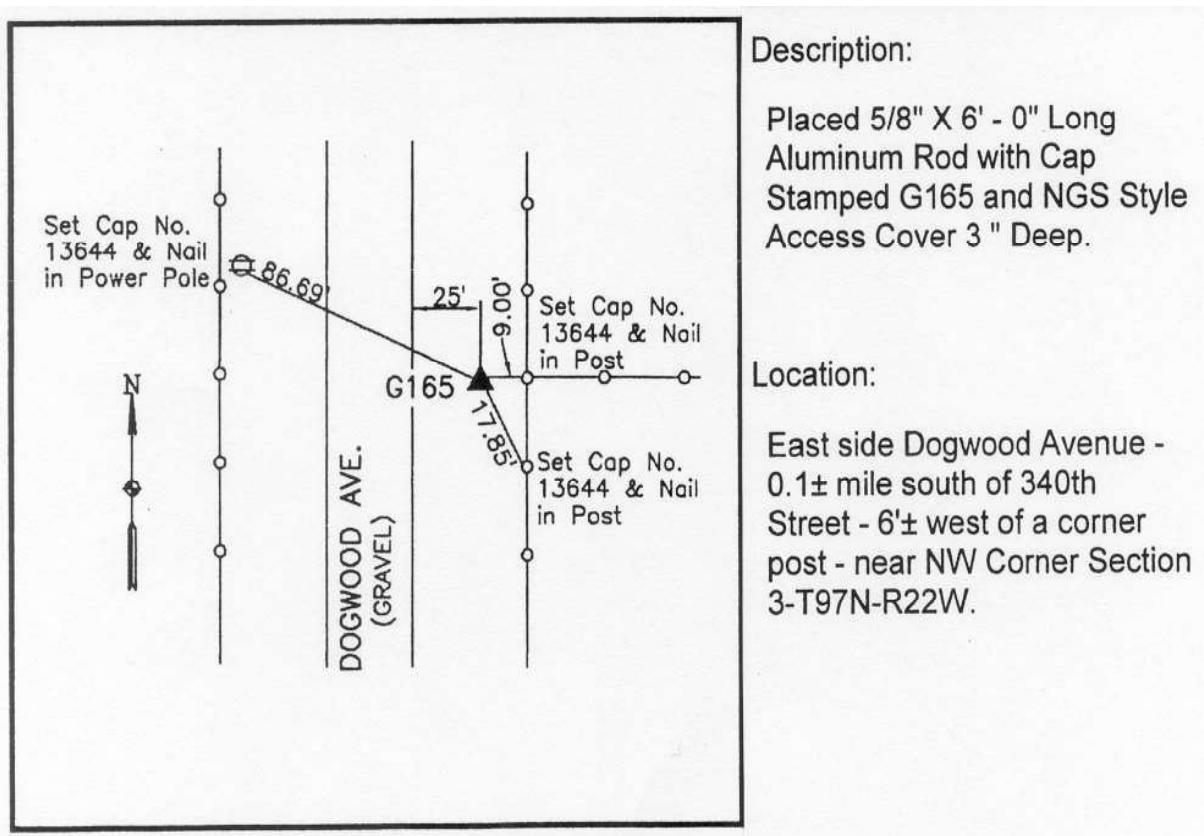
Latitude: **43°15'12.65408"N**

Longitude: **93°26'16.43529"W**

Mapping Angle: **0°02'32"**

Combination Scale Factor: **0.99994326**

Monument Type: 5/8" x 6'-0" long aluminum rod with stamped cap and NGS style access cover.



Description:

Placed 5/8" X 6' - 0" Long Aluminum Rod with Cap Stamped G165 and NGS Style Access Cover 3" Deep.

Location:

East side Dogwood Avenue - 0.1± mile south of 340th Street - 6'± west of a corner post - near NW Corner Section 3-T97N-R22W.