

Worth County, Iowa
Iowa North Zone (1401)
Horiz. Datum: NAD83(1996)
Vert. Datum: NAVD 1988
US Survey Feet
2006

Point Name: **108**

Designation: G164 Cerro Gordo Co GPS Control Monument (Set by WHKS in 2002)

Northing: **3918346.20**sft Easting: **4953775.69**sft

Orthometric Height: **1227.13**sft Ellipsoid Height: **1132.80**sft **Geoid03**

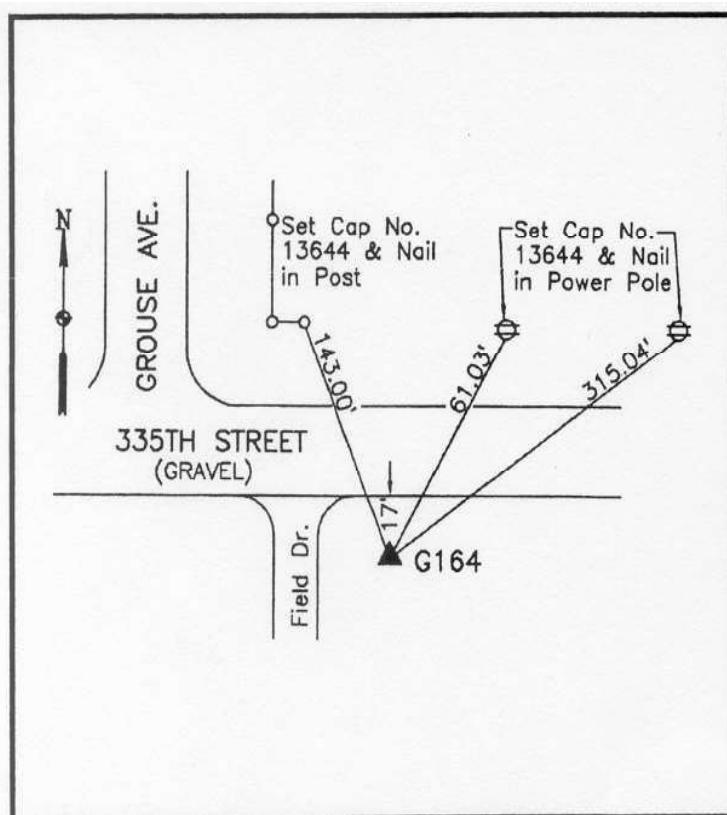
Latitude: **43°14'57.30216"N**

Longitude: **93°22'40.52552"W**

Mapping Angle: **0°04'58"**

Combination Scale Factor: **0.99994282**

Monument Type: 5/8" x 6'-0" long aluminum rod with stamped cap and NGS style access cover.



Description:

Placed 5/8" X 6' - 0" Long
Aluminum Rod with Cap
Stamped G164 and NGS Style
Access Cover 1" Deep.

Location:

South side 335th Street - 150'±
east of Grouse Avenue - east
side of a field entrance - near
West 1/4 Corner Section 6-
T97N-R21W.

This document was prepared by DCI and GBC for use by Worth County, Iowa.