

Worth County, Iowa
Iowa North Zone (1401)
Horiz. Datum: NAD83(1996)
Vert. Datum: NAVD 1988
US Survey Feet
2006

Point Name: **109**

Designation: G163 Cerro Gordo Co GPS Control Monument (Set by WHKS in 2002)

Northing: **3920422.92sft** Easting: **4968045.54sft**

Orthometric Height: **1168.44sft** Ellipsoid Height: **1074.57sft** **Geoid03**

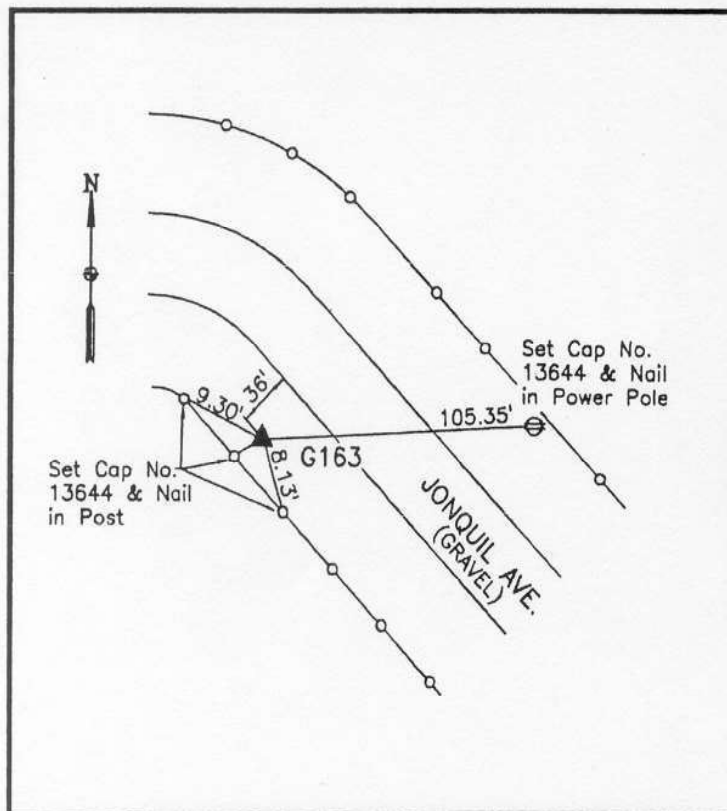
Latitude: **43°15'17.56522"N**

Longitude: **93°19'27.65902"W**

Mapping Angle: **0°07'09"**

Combination Scale Factor: **0.99994660**

Monument Type: 5/8" x 6'-0" long aluminum rod with stamped cap and NGS style access cover.



Description:

Placed 5/8" X 6' - 0" Long
Aluminum Rod with Cap
Stamped G163 and NGS Style
Access Cover 1" Deep.

Location:

Southwesterly side 340th
Street - 0.3± mile east of
Ironwood Avenue - in line with
fence running south - 0.25±
mile west of NW Corner
Section 3-T97N-R21W.

This document was prepared by DCI and GBC for use by Worth County, Iowa.