

Worth County, Iowa
Iowa North Zone (1401)
Horiz. Datum: NAD83(1996)
Vert. Datum: NAVD 1988
US Survey Feet
2006

Point Name: **110**

Designation: G162 Cerro Gordo Co GPS Control Monument (Set by WHKS in 2002)

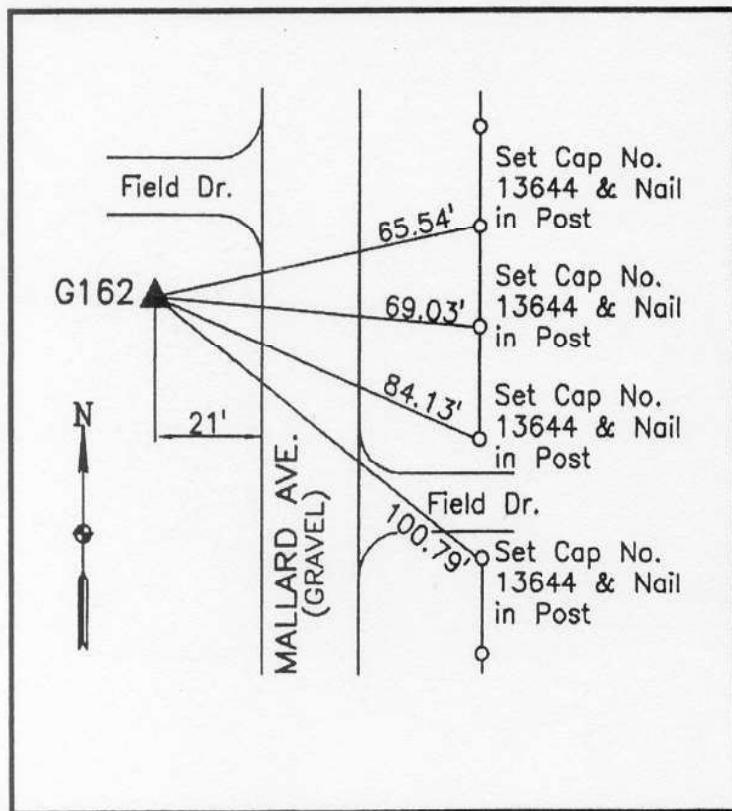
Northing: **3919518.09sft** Easting: **4985063.29sft**

Orthometric Height: **1199.86sft** Ellipsoid Height: **1106.43sft** **Geoid03**

Latitude: **43°15'08.21574"N** Longitude: **93°15'37.73647"W**

Mapping Angle: **0°09'44"** Combination Scale Factor: **0.99994462**

Monument Type: 5/8" x 6'-0" long aluminum rod with stamped cap and NGS style access cover.



Description:

Placed 5/8" X 6' - 0" Long Aluminum Rod with Cap Stamped G162 and NGS Style Access Cover 1 " Deep.

Location:

West side Mallard Avenue - 0.2± mile south of 340th Street - south side of field entrance - near NW Corner Section 6-T97N-R20W.